



CATALOG

LEGACY

SINCE 1956





TIME HAS A WONDERFUL WAY OF SHOWING US WHAT REALLY MATTERS.

HONESTY. INTEGRITY. LOYALTY. QUALITY

From a small store front building on Central Avenue in Newark, New Jersey, the Garfunkle legacy was born. With little money, a tremendous amount of knowledge and the determination, Eleanor (known as Ellie) and Morris (fondly known to all as GAR), started their amazing journey.

Chair product by chair product, barstool element by barstool element; they were determined to seek out a living. Their product was built better. They were immensely loyal to the few clients they had always looking to secure their trust with honesty and integrity.

Let's fast forward to today. Here we are in Lakewood, NJ in a 102,000 sq. foot state of the art facility where the legacy continues. We have never strayed from our core values of honesty, integrity, loyalty, and quality.

Start your journey into our continued legacy and always remember:

"GREAT CONVERSATIONS START HERE"

38

HENRIK BARSTOOL

The Henrik barstool combines modern design and style into a head turning barstool. The matching armchair and side chair create a collection that is as elegant as it is comfortable.



Wormtown Brewery Foxborough, MA
Dennis Colwell Architects

CONTENTS

INDOOR

22

INDOOR SEATING

From Classic GAR styles to our latest designs, there's the perfect selection to fit every aesthetic.

44

FOUNDATION COLLECTION

Elegant yet versatile, the Foundation Collection offers a universal frame with countless possibilities.

58

LOUNGE SEATING

Bold soft seating designs to compliment any interior.

68

INDOOR TEXTILES

A generous array of textures and colors to suit your project needs.

08	OUR COMMITMENT
10	WARRANTY
22	INDOOR SEATING
44	FOUNDATION COLLECTION
58	LOUNGE
68	INDOOR TEXTILES
86	TABLES x BASES
94	TABLE TOPS
104	DETAILS
106	FINISHES

118

KNOT SIDE CHAIR

With box weaved rope and powder coated frame, the Knot side chair is the perfect addition to accent any patio or outdoor seating area.



Knot Barstool Pg.116
Giusto Newport, RI
Libby Slader Interior Design
Photo: Angel Tucker Photography

CONTENTS

OUTDOOR

108

OUTDOOR

A mixed-media of modern designs that are just as inviting indoors as they are outdoors.

122

TABLES x BASES

A variety of table top materials matched with sleek modern bases add just the right amount of detail.

136

OUTDOOR TEXTILES

Bold, eye-catching fabrics offering ample choices to accent your furniture.

142

CARE x MAINTENANCE

Simple cleaning instructions to make sure your furniture maintains its beauty and last for years.

- 108 OUTDOOR
- 122 TABLES x BASES
- 136 OUTDOOR TEXTILES
- 142 CARE x MAINTENANCE

COMMITMENT

OUR PROMISE TO YOU

CORE VALUES

A lot has changed over the years, but the one thing that never will is our enduring commitment to delivering quality and value in each product that we manufacture.

QUALITY

According to the dictionary, "In business, engineering, and manufacturing, quality has a pragmatic interpretation as the non-inferiority or superiority of something. It is also defined as being suitable for its intended purpose while satisfying customers expectations." What a perfect description of our product line. We build in a reliable, maintainable and sustainable fashion.

AUTHENTICITY

With 65 years experience, GAR has learned to manufacture seating with a statement. Furniture with a flair for now without forgetting the past. Our statement for today.

HONESTY

Honesty permeates our relationships, processes, and products. As GAR always said, "Build with structural conviction and never compromise the truth"

INTEGRITY

Strong moral and uncompromising ethical principles and values. The word evolved from the latin adjective "Integer", meaning whole or complete. The value, beliefs, and principles of GAR best describe us as a leading manufacturer of commercial seating.

INNOVATION

New ideas, refreshed versions, daring to dream. We have created better solutions to deliver state of the art products. The ability to have a positive impact on the future of our marketplace. Our engineering mantra is "For every action, there is a reaction." Mr. GAR drilled that into our heads. We must build for the unknown. Unfortunately, our product may not be used for its intended purpose. We must over manufacture. We must over design. We must over engineer. Our innovations are dictated by our marketplace to meet the growing customer demand. It is definitely a catalyst for growth. Entrepreneurs continuously look for better ways to satisfy their customer with the first and foremost, improved quality, durability, service and price. GAR prides itself on advanced technologies and innovative organizational strategies.

Always remember,

"GREAT CONVERSATIONS START HERE"



WARRANTY PRODUCTS

INDOOR SEATING

GAR Products® warrants all standard indoor wood seating for a period of ten (10) years to be free from structural defects in frame material and craftsmanship under normal use and service, except for the Baron side chair and our Lounge series. The Baron side chair and Lounge series will be warranted for one (1) year. Any finish will be warranted for a period of one (1) year to be free from defects under normal use and service, except for genuine teak, faux teak and Thai teak. These finishes and/or slats require periodic maintenance therefore are not covered by our warranty. Any woven or rope material will be warranted for a period of one (1) year to be free from defects under normal use and service. Glides are not covered under any warranty. This warranty does not include discontinued or closeout items. If there are exceptions to this warranty it will be noted on your order.

INDOOR TABLE BASES

GAR Products® warrants all standard indoor table bases for a period of ten (10) years to be free from structural defects in frame material and craftsmanship under normal use and service. Any finish will be warranted for a period of one (1) year to be free from defects under normal use and service. This warranty does not include discontinued or closeout items. If there are exceptions to this warranty it will be noted on your order.

INDOOR TABLETOPS

GAR Products® warrants all standard indoor tabletops for a period of one (1) year to be free from structural defects in material and craftsmanship under normal use and service. Any finish will be warranted for a period of one (1) year to be free from defects under normal use and service, except for genuine teak, faux teak and Thai teak. These finishes and/or slats require periodic maintenance therefore are not covered by our warranty. This warranty does not include discontinued or closeout items. If there are exceptions to this warranty it will be noted on your order.

INDOOR/ OUTDOOR SEATING

GAR Products® warrants indoor/outdoor seating for a period of three (3) years, with the exception of the Campaign folding chair, Baron side chair and iSiMAR seating which GAR Product warrants for one (1) year, to be free from structural defects in frame material and craftsmanship under normal use and service. Any finish will be warranted for a period of one (1) year to be free from defects under normal use and service, except for genuine teak, faux teak and Thai teak. These finishes and/or slats require periodic maintenance therefore are not covered by our warranty. Any woven or rope material will be warranted for a period of one (1) year to be free from defects under normal use and service. Glides are not covered under any warranty. This warranty does not include discontinued or closeout items. If there are exceptions to this warranty it will be noted on your order.

OUTDOOR TABLETOPS

GAR Products® warrants outdoor tabletops for a period of one (1) year to be free from structural defects in material and craftsmanship under normal use and service. Any finish will be warranted for a period of one (1) year, with the exception of the Max and Santorini tables which have no warranty, to be free from defects under normal use and service, except for genuine teak, faux teak and Thai teak. These finishes and/or slats require periodic maintenance therefore are not covered by our warranty. This warranty does not include discontinued or closeout items. If there are exceptions to this warranty it will be noted on your order.

CUSTOM PRODUCT

Custom order and/or designed product not otherwise identified explicitly in the product guide, is warranted for a period of one (1) year to be free from structural defects in frame material and craftsmanship under normal use and service. Any finish will be warranted for a period of one (1) year to be free from defects under normal use and service, except for genuine teak, faux teak and Thai teak. These finishes and/or slats require periodic maintenance therefore are not covered by our warranty. Any woven or rope material will be warranted for a period of one (1) year to be free from defects under normal use and service. Glides are not covered under any warranty. If there are exceptions to this warranty it will be noted on your order.

UPHOLSTERY

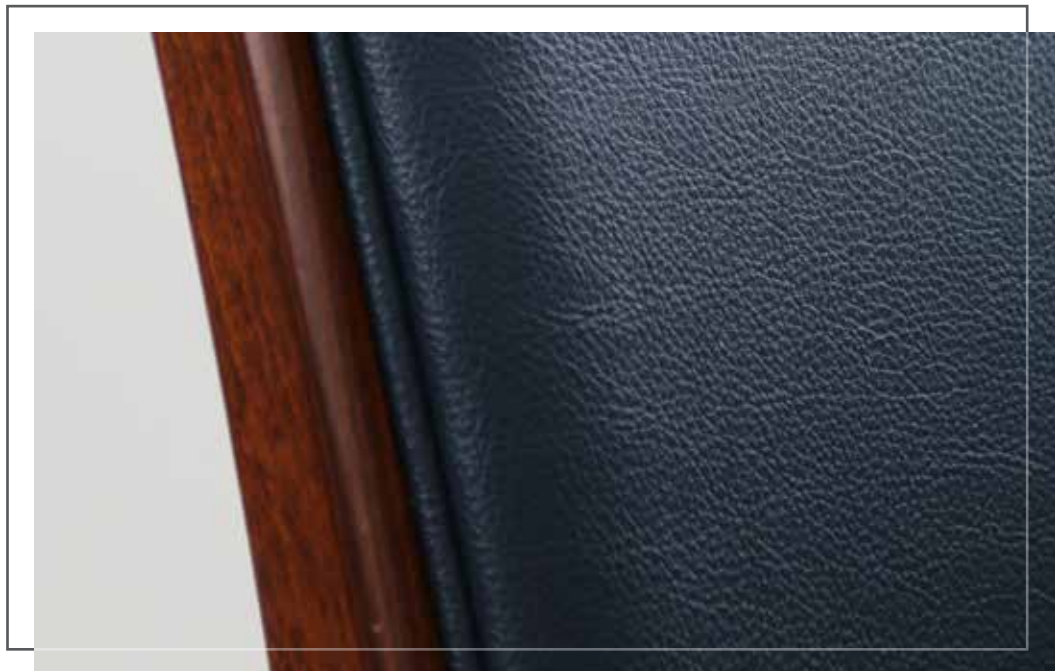
All indoor and outdoor upholstery materials are covered solely by the corresponding upholstery manufacturer's warranty. This warranty does not include discontinued or closeout items. If there are exceptions to this warranty it will be noted on your order.

ANY CLOSEOUT OR DISCONTINUED PRODUCT

GAR Products® warrants most closeout or discontinued item for a period of one (1) year to be free from structural defects in frame material and craftsmanship under normal use and service. Any finish will be warranted for a period of one (1) year to be free from defects under normal use and service, except for genuine teak, faux teak and Thai teak. These finishes and/or slats require periodic maintenance therefore are not covered by our warranty. Any woven or rope material will be warranted for a period of one (1) year to be free from defects under normal use and service. Glides are not covered under any warranty. If there are exceptions to this warranty it will be noted on your order.



THE SMALLEST
DETAILS DON'T
GO UNTOUCHED



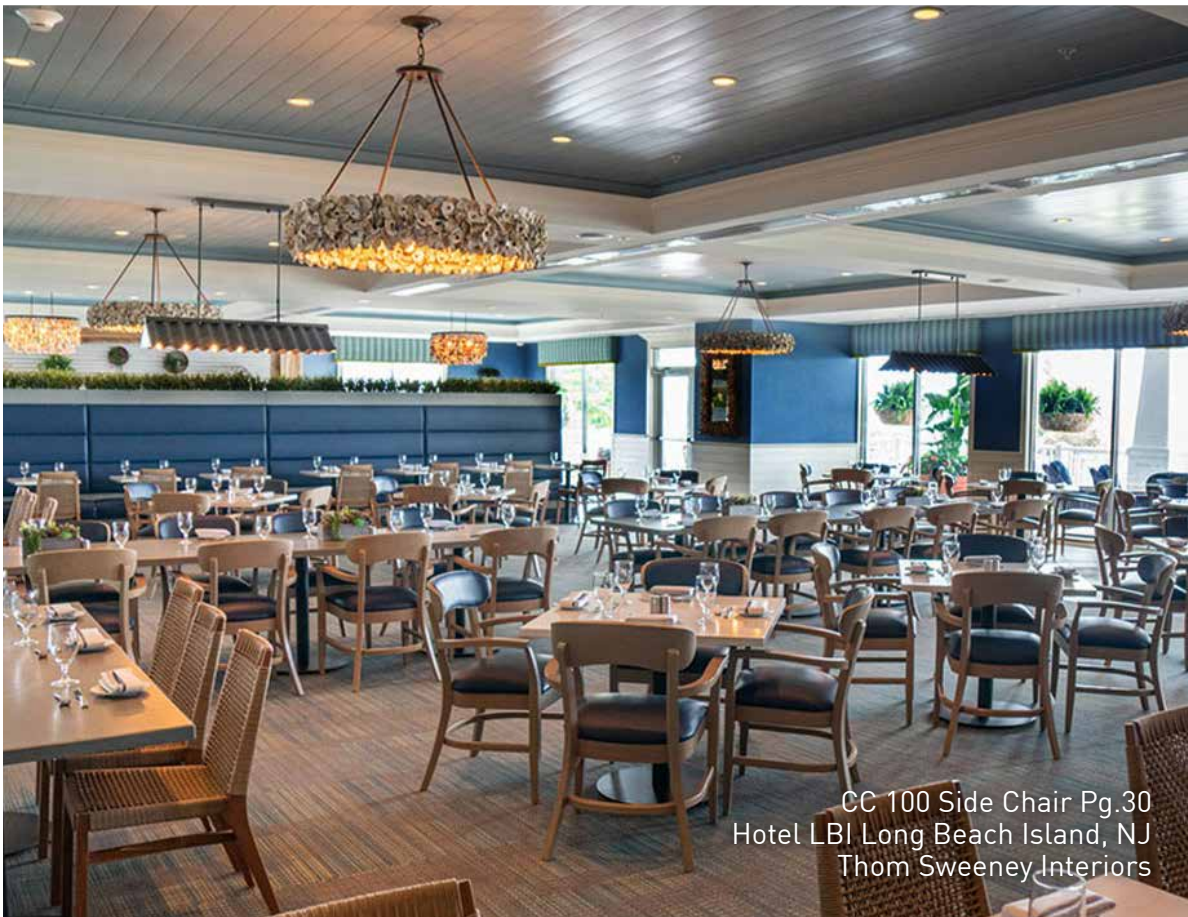




Sten Side Chair Pg.44
Nonna Carola Mamaroneck, NY
Goldman Design Group



831 Side Chair
ALBA on 59, Hanover, MA
Studio 59 East



CC 100 Side Chair Pg.30
Hotel LBI Long Beach Island, NJ
Thom Sweeney Interiors

23 PSPB Armchair Pg.26
Central Wharf Company Boston, MA
Photo: Brian Samuels Photography



Knot Barstool Pg.116
Giusto Newport, RI
Libby Slader Interior Design
Photo: Angel Tucker Photography





Thompson Side Chair



Thompson Wing Chair



Morgan Club Lounge





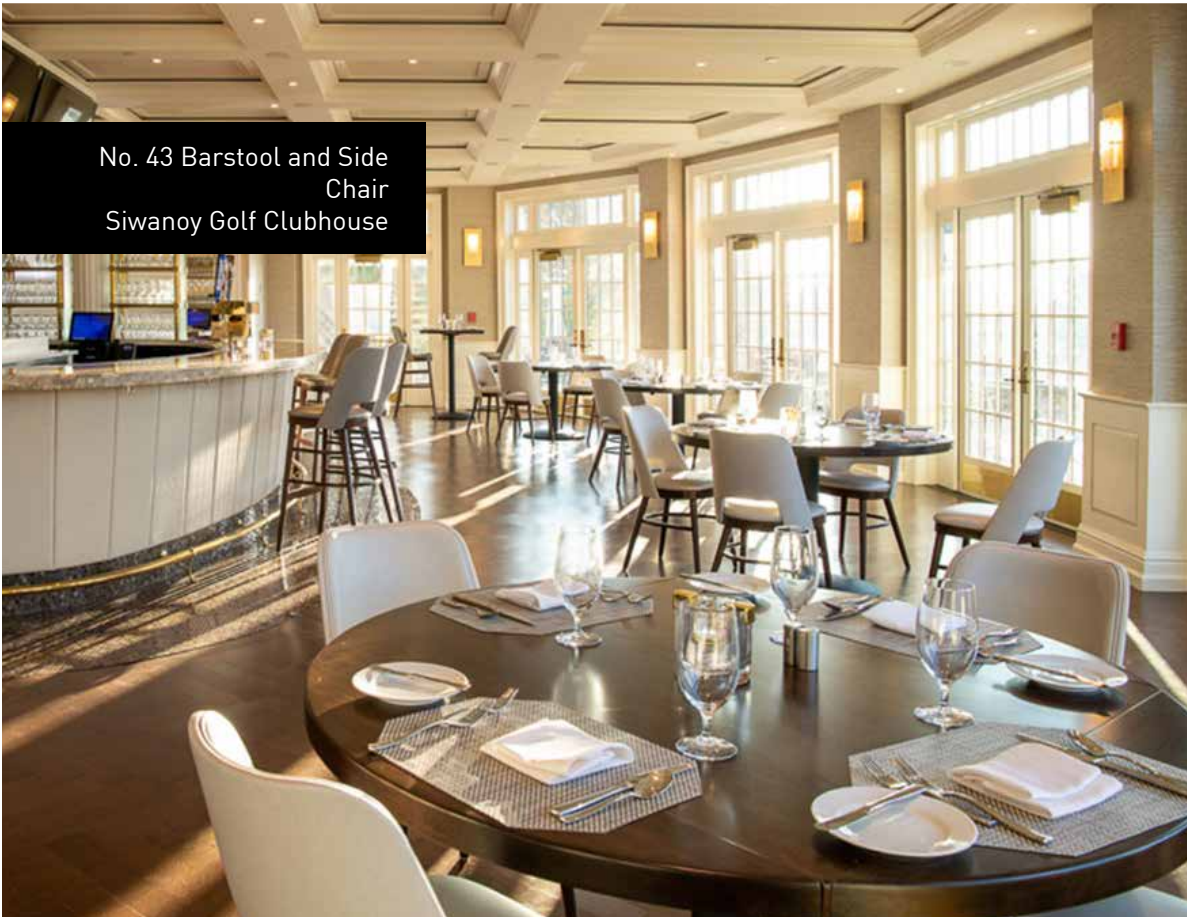
Thompson Armchair

Lexington Lounge Chair

Cooper Tub Chair



Henrik Barstool and Side Chair
Devils Kitchen
Maverick Hotel Grand Junction, CO
Eisen Associates



No. 43 Barstool and Side
Chair
Siwanoy Golf Clubhouse



Bedford Side
Alpha Phi House
University of Mississippi



Ellis Side, Henrik Bar
Foxwoods Casino



INDOOR SEATING

HANDSOME DESIGNS, REFINED DETAILS, AND
THE MOST GENEROUS WARRANTY AROUND.

118 SERIES

LACQUER

LACQUER FINISHES: Black, Natural, Mahogany or Walnut

AVAILABLE WITH: Veneer Seat, Padded Seat, Padded Nail Seat, Padded Back, Padded Nail Back

OPTIONAL ADD-ONS: Underseat Counter Weight



118 VS SIDE



118 PS SIDE



118 PSPNB SIDE

SIDE CHAIR 16.25"W | 21.75"D | 34.75"H | 18.75"SH | 16.25"SD

SIDE CHAIR 16.25"W | 21.75"D | 42"H | 30"SH



PADDED NAIL SEAT



PADDED NAIL BACK

205 SERIES

UV

LACQUER

LACQUER FINISHES: Black, Cherry, Honey Oak, Mahogany, Natural or Walnut

UV FINISHES: 14 Standard Finishes, 1 Premium Finish (Black)

AVAILABLE WITH: Saddle Seat, Veneer Seat, Padded Seat, Wrapped Sides, Padded Back, Padded Nail Back, Padded Outside Back



205 SS SIDE



205 PS SIDE



205 PSPOB BAR

SIDE CHAIR 17.5"W | 20.25"D | 34"H | 18"SH | 16.25"SD

BARSTOOL 18.25"W | 20.25"D | 43.75"H | 30.5"SH | 16.25"SD



WRAPPED SIDES



PADDED NAIL BACK



PADDED BACK

206 SERIES

UV

LACQUER

LACQUER FINISHES: Black, Cherry, Mahogany or Walnut

UV FINISHES: 14 Standard Finishes, 1 Premium Finish (Black)

AVAILABLE WITH: Padded Seat, Padded Seat Wrapped Sides, Padded Back



206 PS SIDE



206 PS BAR

SIDE CHAIR 18.75"W | 18.75"D | 33.25"H | 18"SH | 16.25"SD

BARSTOOL 18.75"W | 19.25"D | 43.5"H | 30.5"SH | 16.25"SD



PADDED SEAT WRAPPED SIDES



PADDED BACK

209 SERIES

UV

LACQUER

LACQUER FINISHES: Black, or Walnut

UV FINISHES: 14 Standard Finishes, 1 Premium Finish (Black)

AVAILABLE WITH: Padded Seat, Padded Seat Wrapped Sides



210 PS SIDE



210 PS BAR

SIDE CHAIR 18.25"W | 20.5"D | 32.5"H | 18"SH | 16.25"SD

BARSTOOL 18.5"W | 19.75"D | 42"H | 30.5"SH | 16.25"SD



PADDED SEAT WRAPPED SIDES

210 SERIES

UV

UV FINISHES: 14 Standard Finishes, 1 Premium Finish (Black)

AVAILABLE WITH: Padded Seat Overupholstered Back, Padded Seat Wrapped Sides Overupholstered Back, Padded Seat Two Piece Back, Padded Seat Wrapped Sides Two Piece Back

Note: Garhyde and Symphony Vintage vinyls cannot be used for upholstery



210 PSWSOUB SIDE



210 PSOUB SIDE



210 PSOUB BAR

SIDE CHAIR 17.5"W | 21"D | 34.5"H | 18"SH | 15.75"SD

BARSTOOL 18.25"W | 20.75"D | 43.5"H | 30.5"SH | 15.75"SD



OVERUPHOLSTERED BACK



TWO PIECE BACK

215 SERIES

UV

LACQUER

LACQUER FINISHES: Black, Cherry, Honey Oak, Mahogany or Walnut

UV FINISHES: 14 Standard Finishes, 1 Premium Finish (Black)

AVAILABLE WITH: Padded Seat Padded Back, Padded Seat Wrapped Sides Padded Back



215 PSPB SIDE



215 PSPB BAR

SIDE CHAIR 16.75"W | 19.75"D | 33.5"H | 18"SH | 16.25"SD

BARSTOOL 19.25"W | 19.5"D | 42.5"H | 30.5"SH | 16.75"SD



PADDED SEAT WRAPPED SIDES

225 SERIES

UV

LACQUER

LACQUER FINISHES: Black, Cherry, Honey Oak, Mahogany, Natural or Walnut

UV FINISHES: 14 Standard Finishes, 1 Premium Finish (Black)

AVAILABLE WITH: Saddle Seat, Veneer Seat, Padded Seat, Wrapped Sides, Padded Back, Padded Nail Back, Padded Inside Back



225 SS SIDE



225 PS SIDE



225 PSPB BAR

SIDE CHAIR 17.5"W | 21"D | 34.5"H | 18"SH | 16"SD

BARSTOOL 18.25"W | 20.75"D | 43.5"H | 30.5"SH | 16"SD



PADDED
OUTSIDE BACK



PADDED SEAT



SADDLE SEAT

23 SERIES

UV

LACQUER

LACQUER FINISHES: Black, Mahogany, Natural or Walnut

UV FINISHES: 14 Standard Finishes, 1 Premium Finish (Black)

AVAILABLE WITH: Veneer Seat, Padded Seat, Padded Fan Back, Padded Nail Seat

TRENDING



23 PSPFB SIDE



23 PSOUNBPNA ARM



23 VS ARM



23 PS BAR



23 PNS SWIVEL BAR

SIDE CHAIR 17"W | 19.25"D | 33.25"H | 18.75"SH | 16.25"SD

ARMCHAIR 24.25"W | 19.5"D | 30.5"H | 18.75"SH | 17.5"SD | 27"AH

BARSTOOL 21.25"W | 20.5"D | 41"H | 30.25"SH | 16.25"SD | 38.75"AH

SWIVEL BAR 40.5"H | 18"D | 30"SH | 21.25"W | 16.25" SD



PADDED NAIL
SEAT



PADDED SEAT



PADDED FAN
BACK

302 SERIES

UV

LACQUER

LACQUER FINISHES: Black, Mahogany or Walnut

UV FINISHES: 14 Standard Finishes, 1 Premium Finish (Black)

AVAILABLE WITH: Veneer Seat, Padded Seat, Padded Nail Seat



302 PS BAR



302 PNS BAR



302 VS BAR

BARSTOOL 18"W | 18"D | 30"H | 30"SH | 16.25"SD



VENEER SEAT



PADDED SEAT



PADDED NAIL SEAT

314 SERIES

UV

UV FINISHES: 14 Standard Finishes, 1 Premium Finish (Black)

AVAILABLE WITH: Padded Seat, Padded Nail Seat

Note: Garhyde and Symphony Vintage vinyls cannot be used for upholstery



314 PS BAR



314 PNS BAR



314 PNS SWIVEL BAR

BARSTOOL 22"W | 22.5"D | 30"H | 30"SH | 17.75"SD

SWIVEL BAR 30.5"H | 19"D | 30.5"SH | 19"W



PADDED SEAT



PADDED NAIL SEAT

379 SERIES

UV

UV FINISHES: 14 Standard Finishes, 1 Premium Finish (Black)

AVAILABLE WITH: Saddle Seat, Padded Seat, Pullover Seat, Pullover Seat Padded Nail Back



379 SS SIDE



379 POS ARM



379 POSPNB BAR

SIDE CHAIR 19.25"W | 20.5"D | 35"H | 18.5"SH | 16.5"SD

ARMCHAIR 22.25"W | 21"D | 35"H | 18.5"SH | 16.5"SD | 27.75"AH

BARSTOOL 18"W | 19"D | 44"H | 30.75"SH | 16.25"SD



SADDLE SEAT



PULLOVER SEAT



OUTSIDE NAIL BACK

604 SERIES

UV

LACQUER

LACQUER FINISHES: Black, Cherry, Mahogany, Natural or Walnut

UV FINISHES: 14 Standard Finishes, 1 Premium Finish (Black)

AVAILABLE WITH: Saddle Seat, Padded Seat, Wrapped Sides



604 SS BAR



604 PSWS BAR



604 PS BAR

BARSTOOL 16.75"W | 16.75"D | 30.75"H | 30.75"SH | 15.5"SD



PADDED SEAT WRAPPED SIDES



PADDED SEAT



SADDLE SEAT

788 SERIES

LACQUER

LACQUER FINISHES: Black, Mahogany, Natural or Walnut

UV FINISHES: 14 Standard Finishes, 1 Premium Finish (Black)

AVAILABLE WITH: Veneer Seat, Padded Seat, Padded Nail Seat



788 VS SIDE



788 PNS BAR

SIDE CHAIR 17.75"W | 18.75"D | 31"H | 18.75"SH | 16.75"SD

BARSTOOL 17.75"W | 18.5"D | 42.25"H | 30.25"SH | 16.25"SD



PADDED NAIL SEAT



PADDED SEAT



VENEER SEAT

CC100 SERIES



UV

UV FINISHES: 14 Standard Finishes, 1 Premium Finish (Black)

AVAILABLE WITH: Saddle Seat, Padded Seat, Wrapped Sides, Padded Back



CC100 SS SIDE



CC100 SS ARM



CC100 PSWS BAR

SIDE CHAIR 21"W | 21"D | 33.75"H | 18.5"SH | 17.75"SD 

ARMCHAIR 24.5"W | 22.5"D | 33.75"H | 18.5"SH | 17.75"SD | 26"AH

BARSTOOL 19.75"W | 21"D | 43.5"H | 30.5"SH | 17.75"SD



PADDED BACK



PADDED SEAT



WRAPPED SIDES

CC105 SERIES



UV

LACQUER

LACQUER FINISHES: Aniline Black or Walnut

UV FINISHES: 14 Standard Finishes, 1 Premium Finish (Black)

AVAILABLE WITH: Saddle Seat, Padded Seat, Wrapped Sides



CC105 SS SIDE



CC105 PS ARM



CC105 PSWS BAR

SIDE CHAIR 21.5"W | 22.5"D | 36.5"H | 18.5"SH | 17.75"SD 

ARMCHAIR 24.5"W | 22.5"D | 37"H | 18.5"SH | 17.75"SD | 26"AH

BARSTOOL 18.75"W | 21"D | 45.5"H | 30.5"SH | 17.75"SD



SADDLE SEAT



PADDED SEAT



WRAPPED SIDES

CC106 SERIES



UV

LACQUER

LACQUER FINISHES: Aniline Black or Walnut

UV FINISHES: 14 Standard Finishes, 1 Premium Finish (Black)

AVAILABLE WITH: Padded Seat Padded Back, Padded Seat Padded Nail Back, Wrapped Sides



CC106 PSPB SIDE



CC106 PSWSPB ARM



CC106 PSPB BAR

SIDE CHAIR 21.5"W | 22.5"D | 36.5"H | 18.5"SH | 17.75"SD 

ARMCHAIR 24.5"W | 22.5"D | 37"H | 18.5"SH | 17.75"SD | 26"AH

BARSTOOL 18.75"W | 21"D | 45.5"H | 30.5"SH | 17.75"SD



PADDED BACK



WRAPPED SIDES



PADDED NAIL BACK

CC107 SERIES



UV

LACQUER

LACQUER FINISHES: Aniline Black or Walnut

UV FINISHES: 14 Standard Finishes, 1 Premium Finish (Black)

AVAILABLE WITH: Padded Seat Overupholstered Back, Wrapped Sides, Two Piece Back

Note: Garhyde and Symphony Vintage vinyls cannot be used for upholstery



CC107 PS0UB SIDE



CC107 PSWS0UB ARM



CC107 PSWS0UB BAR

SIDE CHAIR 21.5"W | 23"D | 36.75"H | 18.5"SH | 17.75"SD 

ARMCHAIR 24.5"W | 23"D | 37"H | 18.5"SH | 17.75"SD | 26"AH

BARSTOOL 18.75"W | 21.5"D | 45.25"H | 30.5"SH | 17.5"SD



WRAPPED SIDES



PADDED SEAT

CC110 SERIES



UV

LACQUER

LACQUER FINISHES: Aniline Black or Walnut

UV FINISHES: 14 Standard Finishes, 1 Premium Finish (Black)

AVAILABLE WITH: Saddle Seat, Padded Seat, Wrapped Sides




CC110 SS SIDE



CC110 PS ARM



CC110 PS BAR

SIDE CHAIR 22"W | 22.5"D | 36.75"H | 18.5"SH | 17.75"SD 

ARMCHAIR 24.5"W | 22.5"D | 37"H | 18.5"SH | 17.75"SD | 26"AH

BARSTOOL 18.75"W | 21"D | 45.5"H | 30.5"SH | 17.75"SD



SADDLE SEAT



PADDED SEAT



WRAPPED SIDES

CC111 SERIES



UV

LACQUER

LACQUER FINISHES: Aniline Black or Walnut

UV FINISHES: 14 Standard Finishes, 1 Premium Finish (Black)

AVAILABLE WITH: Padded Seat, Padded Slat Back, Padded Wrapped Sides




CC111 PPSB SIDE



CC111 PPSB ARM



CC111 PPSB BAR

SIDE CHAIR 22"W | 22.5"D | 36.75"H | 18.5"SH | 17.75"SD 

ARMCHAIR 24.5"W | 22.5"D | 37"H | 18.5"SH | 17.75"SD | 26"AH

BARSTOOL 18.75"W | 21"D | 45.5"H | 30.5"SH | 17.75"SD



PADDED SEAT



WRAPPED SIDES

CC115 SERIES



UV

LACQUER

LACQUER FINISHES: Aniline Black or Walnut

UV FINISHES: 14 Standard Finishes, 1 Premium Finish (Black)

AVAILABLE WITH: Padded Seat, Padded Back, Padded Nail Back, Wrapped Sides



CC115 PSPB SIDE



CC115 PSWSPB ARM

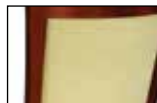


CC115 PSWSPB BAR

SIDE CHAIR 20.25"W | 22"D | 35.25"H | 18.5"SH | 17.75"SD 

ARMCHAIR 24.5"W | 22"D | 35.25"H | 18.5"SH | 17.75"SD | 26"AH

BARSTOOL 18.5"W | 21.75"D | 45.75"H | 30.5"SH | 17.75"SD



OUTSIDE PADDED BACK



WRAPPED SIDES



PADDED SEAT

CC119 SERIES



UV

LACQUER

LACQUER FINISHES: Aniline Black or Walnut

UV FINISHES: 14 Standard Finishes, 1 Premium Finish (Black)

AVAILABLE WITH: Padded Seat Wrapped Sides Padded Hole Back

Note: Garhyde and Symphony Vintage vinyls cannot be used for upholstery




CC119 PSWSPHB SIDE



CC119 PSWSPHB ARM



CC119 PSWSPHB BAR

SIDE CHAIR 20.25"W | 22.25"D | 35.5"H | 18.5"SH | 17.75"SD 

ARMCHAIR 24.5"W | 22.25"D | 35.5"H | 18.5"SH | 17.75"SD | 26"AH

BARSTOOL 18.5"W | 22"D | 46"H | 30.5"SH | 17.75"SD



WRAPPED SIDES



PADDED HOLE BACK

CC135 SERIES



UV

LACQUER

LACQUER FINISHES: Aniline Black or Walnut

UV FINISHES: 14 Standard Finishes, 1 Premium Finish (Black)

AVAILABLE WITH: Saddle Seat, Padded Seat, Wrapped Sides



CC135 SS SIDE



CC135 PS ARM



CC135 PSWS BAR

SIDE CHAIR 21.5"W | 21.5"D | 35.5"H | 18.5"SH | 17.75"SD 

ARMCHAIR 24.5"W | 22"D | 35.5"H | 18.5"SH | 17.75"SD | 26"AH

BARSTOOL 20"W | 21"D | 45"H | 30.5"SH | 17.75"SD



SADDLE SEAT



PADDED SEAT



WRAPPED SIDES

CC170 SERIES

UV

LACQUER

LACQUER FINISHES: Aniline Black or Walnut

UV FINISHES: 14 Standard Finishes, 1 Premium Finish (Black)

AVAILABLE WITH: Padded Seat, Padded Seat Wrapped Sides, Padded Back



CC170 PS SIDE



CC170 PS ARM



CC170 PS BAR

SIDE CHAIR 21.25"W | 22"D | 34"H | 18.5"SH | 17.75"SD 

ARMCHAIR 24.5"W | 22"D | 34"H | 18.5"SH | 17.75"SD | 26"AH

BARSTOOL 20"W | 22.25"D | 44"H | 30.5"SH | 17.75"SD



PADDED SEAT WRAPPED SIDES



PADDED BACK

CC172 SERIES

UV

LACQUER

LACQUER FINISHES: Aniline Black or Walnut

UV FINISHES: 14 Standard Finishes, 1 Premium Finish (Black)

AVAILABLE WITH: Padded Seat, Padded Seat Wrapped Sides, Padded Back




CC172 PS SIDE



CC172 PS ARM



CC172 PS BAR

SIDE CHAIR 18"W | 22.25"D | 32.25"H | 18.5"SH | 17.75"SD 

ARMCHAIR 25"W | 22.25"D | 34.25"H | 18.5"SH | 17.75"SD | 26"AH

BARSTOOL 19.75"W | 22"D | 43"H | 30.5"SH | 17.75"SD



PADDED SEAT WRAPPED SIDES



PADDED BACK

CC176 SERIES

UV

UV FINISHES: 14 Standard Finishes, 1 Premium Finish (Black)

AVAILABLE WITH: Padded Seat, Padded Seat Wrapped Sides, Padded Back



CC176 PS SIDE



CC176 PS ARM



CC176 PS BAR

SIDE CHAIR 20.25"W | 22.25"D | 35.5"H | 18.5"SH | 17.75"SD 

ARMCHAIR 24.5"W | 22.25"D | 35.5"H | 18.5"SH | 17.75"SD | 26"AH

BARSTOOL 18.5"W | 22"D | 46"H | 30.5"SH | 17.75"SD



PADDED SEAT WRAPPED SIDES



PADDED BACK

FLAIR SERIES



ASH

FINISH: Standard black powder coated frame with natural ash or black ash seat and back panel.

AVAILABLE WITH: Padded Seat, Padded Seat Padded Back

**Stainless steel frame with Ash seat and back panel available by special order.*



FLAIR SIDE



FLAIR BAR

SIDE CHAIR 20.5"W | 20.75"D | 31.5"H | 17.75"SH

BARSTOOL 20.75"W | 19"D | 40.75"H | 30"SH

GS 90 SERIES



UV

UV FINISHES: 14 Standard Finishes, 1 Premium Finish (Black)

AVAILABLE WITH: Padded Seat



GS 90 PS SIDE



GS 90 PS BAR

SIDE CHAIR 19.25"W | 20.25"D | 33.25"H | 18.5"SH | 17.5"SD 

BARSTOOL 18"W | 20.25"D | 42"H | 30"SH | 16"SD



PADDED SEAT

GS 95 SERIES



UV

UV FINISHES: 14 Standard Finishes, 1 Premium Finish (Black)

AVAILABLE WITH: Padded Seat



GS 95 PS SIDE



GS 95 PS BAR

SIDE CHAIR 19.25"W | 20.25"D | 34.25"H | 18.5"SH | 17.5"SD 

BARSTOOL 18"W | 20.25"D | 43"H | 30"SH | 16"SD



PADDED INSET SEAT

HÄGEN SERIES

UV

UV FINISHES: 14 Standard Finishes, 1 Premium Finish (Black)

AVAILABLE WITH: Veneer Seat, Padded Seat, Padded Inset Seat, Padded Seat Padded Back, Padded Inset Seat Padded Back



HÄGEN PS SIDE



HÄGEN PISPBM ARM



HÄGEN PS BAR

SIDE CHAIR 20"W | 19.5"D | 34.5"H | 18.5"SH | 16"SD

ARMCHAIR 24.5"W | 22"D | 34.5"H | 18"SH | 18"SD | 26.75"AH

BARSTOOL 21"W | 20.5"D | 42"H | 31"SH | 16"SD



PADDED INSET SEAT



PADDED SEAT



VENEER SEAT

HENRIK SERIES

UV

UV FINISHES: 14 Standard Finishes, 1 Premium Finish (Black)

AVAILABLE WITH: Box Seat Overupholstered Hole Back



HENRIK BSOUHB SIDE



HENRIK BSOUHB ARM



HENRIK BSOUHB BAR

SIDE CHAIR 21.75"W | 24"D | 34.5"H | 18"SH | 17"SD

ARMCHAIR 22"W | 23"D | 32"H | 18"SH | 17"SD | 27"AH

BARSTOOL 22.75"W | 23.25"D | 43.5"H | 30"SH | 16.5"SD



BOX SEAT

JARL SERIES

UV

UV FINISHES: 14 Standard Finishes, 1 Premium Finish (Black)

AVAILABLE WITH: Veneer Seat, Padded Seat, Padded Back



JARL PS SIDE



JARL PSPB SIDE



JARL PS BAR

SIDE CHAIR 20.25"W | 21.75"D | 33.5"H | 17.75"SH | 16"SD

BARSTOOL 20.75"W | 20"D | 42.25"H | 28.5"SH | 16"SD



VENEER SEAT



PADDED SEAT



PADDED BACK

JARL BACKLESS SERIES

SPECIAL ORDER

UV

UV FINISHES: 14 Standard Finishes, 1 Premium Finish (Black)

AVAILABLE WITH: Veneer Seat, Padded Seat



JARL PS BACKLESS SWIVEL BAR



JARL VS BACKLESS BAR



JARL PS BACKLESS CHAIR

CHAIR HT. 17"W | 17"D | 181.5"H | 18"SH

BARSTOOL HT. 18.5"W | 18.5"D | 30.5"H | 30"SH

SWIVEL BAR HT. 30.5"H | 18.5"D | 30.5"SH | 18.5"W



VENEER SEAT



PADDED SEAT

MATTEO SERIES

UV

UV FINISHES: 14 Standard Finishes, 1 Premium Finish (Black)

AVAILABLE WITH: Box Seat Overupholstered Back, Box Seat Overupholstered Hole Back

NOTE: For hole back version, upholsteries with 4 way stretch must be used. Cannot use leather. Premium may apply to any other upholstery. Will review when received.



MATTEO BS0UB SIDE

MATTEO BS0UHB ARM

MATTEO BS0UB BAR

MATTEO BS0UB SWIVEL BAR

SIDE CHAIR 19.5"W | 20.75"D | 33.25"H | 18"SH

ARMCHAIR 22.25"W | 25"D | 33.25"H | 18"SH | 26.25"AH

BARSTOOL 21"W | 22"D | 42"H | 30"SH

SW BARSTOOL 19.75"W | 23"D | 42.5"H | 30"SH



No. 53 SERIES

UV

UV FINISHES: 14 Standard Finishes, 1 Premium Finish (Black)

AVAILABLE WITH: Padded Seat, Padded Seat Padded Hole Back, Padded Seat Button Tufted Hole Back, Padded Seat Overupholstered Hole Back, Padded Seat Sewn Button Tufted Hole Back*



No. 53 PSBTB SIDE CHAIR

No. 53 VS PSPHB BARSTOOL

SIDE CHAIR 19"W | 24 1/4"D | 31 1/2"H | 18"SH | 18 3/4"SD

BARSTOOL 19 1/2"W | 23 3/4"D | 44"H | 32"SH | 18 3/4"SD



No. 4303 SERIES

LACQUER

LACQUER FINISHES: Black, Natural or Walnut

AVAILABLE WITH: Veneer Seat, Padded Seat, Padded Nail Seat



No. 4303 VS BACKLESS BAR



NO. 4303 PS BACKLESS BAR

BARSTOOL 14.5"W | 14.5"D | 31.5"H | 14.5"SD



VENEER SEAT



PADDED SEAT



PADDED NAIL SEAT

No. 8291 SERIES

LACQUER

LACQUER FINISHES: Black or Walnut

AVAILABLE WITH: Veneer Seat, Padded Seat, Padded Nail Seat



No. 8291 VS SIDE



No. 8291 VS BAR

SIDE CHAIR 17.25"W | 20"D | 32.25"H | 18"SH | 15.25"SD

BARSTOOL 18"W | 20"D | 42.5"H | 29.75"SH | 15.5"SD



VENEER SEAT



PADDED SEAT



PADDED NAIL SEAT

QUINCY SERIES



UV

UV FINISHES: 14 Standard Finishes, 1 Premium Finish (Black)

AVAILABLE WITH: Padded Seat Padded Back, Wrapped Sides



QUINCY PSPB SIDE



QUINCY PSWSPB ARM



QUINCY PSPB BAR

SIDE CHAIR 20.25"W | 22"D | 35.25"H | 18.5"SH | 17.75"SD 

ARMCHAIR 24.5"W | 22"D | 35.25"H | 18.5"SH | 17.75"SD | 26.25"AH

BARSTOOL 18.5"W | 21.25"D | 45.75"H | 30.5"SH | 17.25"SD



PADDED BACK



OUTSIDE WOOD
VENNER BACK



WRAPPED SIDES

REGENT SERIES

UV

UV FINISHES: 14 Standard Finishes, 1 Premium Finish (Black)

AVAILABLE WITH: Pull Over Seat 2 Piece Overupholstered Outside Nail Back



REGENT POS2PCOU0NB SIDE

SIDE CHAIR 20.5"W | 24.5"D | 35.5"H | 17.5"SH

SØREN SERIES

UV

UV FINISHES: 14 Standard Finishes, 1 Premium Finish (Black)

AVAILABLE WITH: Veneer Seat, Padded Inset Seat, Padded Inset Seat Padded Back



SØREN VS SIDE

SØREN PISPB ARM

SØREN PIS BAR

SIDE CHAIR 18.75"W | 21.5"D | 30.75"H | 18"SH | 16"SD

ARMCHAIR 22.25"W | 22.5"D | 30.5"H | 18"SH | 16"SD | 26.25"AH

BARSTOOL 22.25"W | 22"D | 43.75"H | 30.75"SH | 16"SD



VENNER SEAT



PADDED INSET SEAT



PADDED BACK

STEN SERIES

UV

UV FINISHES: 14 Standard Finishes, 1 Premium Finish (Black)

AVAILABLE WITH: Overupholstered Seat Overupholstered Back

Note: Garhyde and Symphony Vintage vinyls cannot be used for upholstery



STEN SIDE CHAIR

STEN BARSTOOL

STEN SWIVEL BARSTOOL

SIDE CHAIR 17.5"W | 22.5"D | 34.75"H | 18.75"SH | 16"SD

BARSTOOL 20.25"W | 20.25"D | 45.25"H | 30"SH | 16"SD

SWIVEL BAR 47.75"H | 20.75"D | 20.25"W



OVERUPHOLSTERED



THE FOUNDATION COLLECTION

A DYNAMIC DESIGN COLLECTION WHERE THE
CHAIR BECOMES THE BLANK CANVAS TO CREATE
YOUR MASTERPIECE.

FOUNDATION

THE PROCESS



01 UNIVERSAL FRAME

Starting with a classically styled frame, select from 12 different back styles, choose from countless combinations of upholstery, seats and armrests options to create your unique model.

02 SELECT A SEAT

Padded Seat? Inset Seat? Or a classic Pullover style? The choice is yours.



PADDED SEAT
(PSPB)



PADDED SEAT
WRAPPED SIDES
(PSWSPB)



PADDED INSET SEAT
(PISPB)



BOX SEAT
(BSPB)



PULLOVER SEAT
(POSPB / POSOUB)



PULLOVER SEAT W/
WELT
(POSWPB)



"V" PULLOVER
SEAT
(VPOS)



"T" PULLOVER
SEAT
(TPOS)

03

ADD AN ARM

Your design interpretation to produce armchair functionality at its highest level. Paint your installation to fit your client's needs with the perfect look



OVERUPHOLSTERED
ARM (OUA)



STANDARD ARM
(SA)



OUTSIDE PADDED
ARM (OPA)



INSET PADDED ARM
(IPA)



WRAPPED ARM
(WA)

04

RELAX. WE GOT THIS.

Sit back and let our expert craftsmen fabricate your unique seat for chairs or barstools.



ALLEN SERIES

UV

UV FINISHES: 14 Standard Finishes, 1 Premium Finish (Black)

STANDARD WITH: Padded Seat Padded Back



ALLEN POSPB SIDE



ALLEN PSPBIPA ARM



ALLEN PSPB BAR

SIDE CHAIR 18.5"W | 24.25"D | 38"H | 18.25"SH | 17.75"SD

ARMCHAIR 24.25"W | 25"D | 38"H | 18.25"SH | 18.75"SD | 26"AH

BARSTOOL 17"W | 23.25"D | 47"H | 30.5"SH | 17.5"SD

BEDFORD SERIES

UV

UV FINISHES: 14 Standard Finishes, 1 Premium Finish (Black)

STANDARD WITH: Pullover Seat Overupholstered Back



BEDFORD POSOUB SIDE



BEDFORD POSOUBOUA ARM



BEDFORD POSOUB BAR

SIDE CHAIR 18.5"W | 24.25"D | 38"H | 18.25"SH | 17.75"SD

ARMCHAIR 24.25"W | 25"D | 38"H | 18.25"SH | 18.5"SD | 26"AH

BARSTOOL 17"W | 23.25"D | 47"H | 30.5"SH | 17"SD

BERGEN SERIES

UV

UV FINISHES: 14 Standard Finishes, 1 Premium Finish (Black)

STANDARD WITH: Padded Seat Padded Inside and Outside Back



BERGEN PSPB SIDE



BERGEN PSPBSA ARM



BERGEN PSPB BAR

SIDE CHAIR 18.5"W | 24.25"D | 38"H | 18.25"SH | 18.5"SD

ARMCHAIR 24.25"W | 25"D | 38"H | 18.25"SH | 19"SD | 26"AH

BARSTOOL 17"W | 23.25"D | 47"H | 30.5"SH | 17.5"SD

CARLISLE SERIES

UV

UV FINISHES: 14 Standard Finishes, 1 Premium Finish (Black)

STANDARD WITH: Padded Seat Padded Back



CARLISLE POSPB SIDE



CARLISLE POSPB ARM



CARLISLE POSPB BAR

SIDE CHAIR 18.5"W | 24.25"D | 38"H | 18.25"SH | 18.5"SD

ARMCHAIR 24.25"W | 25"D | 38"H | 18.25"SH | 19"SD | 26"AH

BARSTOOL 17"W | 23.25"D | 47"H | 30.5"SH | 17.5"SD

DRAKE SERIES

UV

UV FINISHES: 14 Standard Finishes, 1 Premium Finish (Black)

STANDARD WITH: Padded Seat Woven Back



DRAKE PSWB SIDE



DRAKE PSWB ARM



DRAKE PSWB BAR

SIDE CHAIR 18.5"W | 24.25"D | 38"H | 18.25"SH | 17.75"SD

ARMCHAIR 24.25"W | 25"D | 38"H | 18.25"SH | 18.5"SD | 26"AH

BARSTOOL 17"W | 23.25"D | 47"H | 30.5"SH | 17"SD

ELLIS SERIES

UV

UV FINISHES: 14 Standard Finishes, 1 Premium Finish (Black)

STANDARD WITH: Padded Seat Padded Back



BERGEN PSPB SIDE



BERGEN PSPBSA ARM



BERGEN PSPB BAR

SIDE CHAIR 18.5"W | 24.25"D | 38"H | 18.25"SH | 17.75"SD

ARMCHAIR 24.25"W | 25"D | 38"H | 18.25"SH | 18.75"SD | 26"AH

BARSTOOL 17"W | 23.25"D | 47"H | 30.5"SH | 17.5"SD

ESSEX SERIES

UV

UV FINISHES: 14 Standard Finishes, 1 Premium Finish (Black)

STANDARD WITH: Pullover Seat Button Tufted Back



ESSEX POSBTB SIDE



ESSEX POSBTB ARM



ESSEX POSBTB BAR

SIDE CHAIR 18.5"W | 24.25"D | 38"H | 18.25"SH | 17.5"SD

ARMCHAIR 24.25"W | 25"D | 38"H | 18.25"SH | 18.5"SD | 26"AH

BARSTOOL 17"W | 23.25"D | 47"H | 30.5"SH | 17"SD

FULTON SERIES

UV

UV FINISHES: 14 Standard Finishes, 1 Premium Finish (Black)

STANDARD WITH: Padded Seat Padded Back



FULTON PSPB SIDE



FULTON PSPBWA ARM



FULTON PSPB BAR

SIDE CHAIR 18.5"W | 24.25"D | 38"H | 18.25"SH | 17.75"SD

ARMCHAIR 24.25"W | 25"D | 38"H | 18.25"SH | 18.75"SD | 26"AH

BARSTOOL 17"W | 23.25"D | 47"H | 30.5"SH | 17.5"SD

HENRY SERIES

UV

UV FINISHES: 14 Standard Finishes, 1 Premium Finish (Black)

STANDARD WITH: Pullover Seat Overupholstered Back



HENRY VOPSOUB SIDE



HENRY POSOUBOUA ARM



HENRY POSOUB BAR

SIDE CHAIR 18.5"W | 24.25"D | 38"H | 18.25"SH | 17.75"SD

ARMCHAIR 24.25"W | 25"D | 38"H | 18.25"SH | 18.75"SD | 26"AH

BARSTOOL 17"W | 23.25"D | 47"H | 30.5"SH | 17.5"SD

JACKSON SERIES

UV

UV FINISHES: 14 Standard Finishes, 1 Premium Finish (Black)

STANDARD WITH: Padded Seat Padded Back



JACKSON PSWSPB SIDE



JACKSON PSPB ARM



JACKSON PSPB BAR

SIDE CHAIR 18.5"W | 24.25"D | 38"H | 18.25"SH | 17.5"SD

ARMCHAIR 24.25"W | 25"D | 38"H | 18.25"SH | 18.5"SD | 26"AH

BARSTOOL 17"W | 23.25"D | 47"H | 30.5"SH | 17"SD

MERCER SERIES

UV

UV FINISHES: 14 Standard Finishes, 1 Premium Finish (Black)

STANDARD WITH: Padded Seat Padded Back



MERCER PISPB SIDE



MERCER PSPBSA ARM



MERCER PSPB BAR

SIDE CHAIR 18.5"W | 24.25"D | 38"H | 18.25"SH | 17.75"SD

ARMCHAIR 24.25"W | 25"D | 38"H | 18.25"SH | 18.75"SD | 26"AH

BARSTOOL 17"W | 23.25"D | 47"H | 30.5"SH | 17.5"SD

REVERE SERIES NEW

UV

UV FINISHES: 14 Standard Finishes, 1 Premium Finish (Black)

STANDARD WITH: Pull Over Nail Seat Overupholstered Woven Back

Note: Back straps are standard in vinyl. An up-charge is added when fabric or leather is selected



REVERE PONSOUWB SIDE



REVERE PONSOUWB ARM



REVERE PONSOUWB BAR

SIDE CHAIR 18.5"W | 24.25"D | 38"H | 18.25"SH | 17.75"SD

ARMCHAIR 24.25"W | 25"D | 38"H | 18.25"SH | 18.5"SD | 26"AH

BARSTOOL 17"W | 23.25"D | 47"H | 30.5"SH | 17"SD

WYATT SERIES

UV

UV FINISHES: 14 Standard Finishes, 1 Premium Finish (Black)

STANDARD WITH: Pullover Seat Overupholstered Back



WYATT PSWSOUB SIDE



WYATT POSOUBOUA ARM



WYATT PSWSOUB BAR

SIDE CHAIR 18.5"W | 24.25"D | 38"H | 18.25"SH | 17.75"SD

ARMCHAIR 24.25"W | 25"D | 38"H | 18.25"SH | 18.5"SD | 26"AH

BARSTOOL 17"W | 23.25"D | 47"H | 30.5"SH | 17"SD

DECO SERIES

FINISHES: Custom lacquer finish to match UV colors



SIDE CHAIR 33.5"H | 22.25"D | 17.25"SD | 19"SH | 20"W

EVAN SERIES

FINISHES: Custom lacquer finish to match UV colors



SIDE CHAIR 32"H | 21.75"D | 17"SD | 19.75"SH | 19.75"W

CHLOE SERIES

FINISHES: Custom lacquer finish to match UV colors



CHLOE SIDE



CHLOE ARM



CHLOE BAR



CHLOE DOUBLE

SIDE CHAIR 33.5"H | 22.75"D | 18"SD | 19.25"SH | 22.5"W

ARMCHAIR 33.5"H | 22.75"D | 17.75"SD | 19.25"SH | 22.5"W | 26.5"AH | 19.25"SW

BARSTOOL 40.25"H | 21.75"D | 17.75"SD | 30.5"SH | 22.5"W

DOUBLE 31"H | 26"D | 20.75"SD | 16.25"SH | 50"W | 23.25"AH | 46.5"SW

IRENE SERIES

FINISHES: Custom lacquer finish to match UV colors



IRENE SIDE



IRENE ARM



IRENE BAR



IRENE DOUBLE

SIDE CHAIR 32"H | 23.25"D | 17.75"SD | 19.75"SH | 19.75"W

ARMCHAIR 29.25"H | 27.5"D | 20.5"SD | 17.75"SH | 26.5"W | 26.5"AH | 22"SW

BARSTOOL 44"H | 25.25"D | 17.75"SD | 32"SH | 19.75"W

DOUBLE 28.75"H | 28"D | 17.25"SD | 17.25"SH | 45.75"W | 26.75"AH | 41.25"W

AVA SERIES

FINISHES: Custom lacquer finish to match UV colors



CHLOE SIDE



CHLOE DOUBLE

SIDE CHAIR 34"H | 26"D | 20"SD | 19"SH | 21.75"W

DOUBLE 30.25"H | 27.5"D | 22"SD | 17.25"SH | 44"W | 27.5"AH | 39"SW

MAYA SERIES

FINISHES: Custom lacquer finish to match UV colors



MAYA LOUNGE



MAYA BAR

LOUNGE 29.25"H | 27.25"D | 21.25"SD | 16.5"SH | 25.25"W | 17.25"AH | 23"SW

BARSTOOL 42.75"H | 25.25"D | 18.5"SD | 31.5"SH | 22"W

QUINN SERIES

FINISHES: Custom lacquer finish to match UV colors



QUINN SIDE PADDED BACK

QUINN SIDE CANE BACK

QUINN SIDE ROPE BACK

QUINN BARSTOOL

SIDE CHAIR 33"H | 21.25"D | 19"SD | 20.5"SH | 21.75"W

BARSTOOL 41.25"H | 22.75"D | 19.75"SD | 31"SH | 21.75"W

TAMARA SERIES

FINISHES: Custom lacquer finish to match UV colors



IRENE SIDE

IRENE ARM

IRENE BAR

IRENE DOUBLE

SIDE CHAIR 33"H | 25.25"D | 17.75"SD | 20"SH | 21.25"W | 27.5"AH | 19.75"SW

ARMCHAIR 30.75"H | 26.5"D | 21"SD | 18.5"SH | 23.5"W | 26"AH | 20.5"SW

BARSTOOL 41.25"H | 21.75"D | 30.5"SH | 20"W





LOUNGE SEATING

MONROE SERIES

FINISHES: Custom lacquer finish to match UV colors



LOUNGE 39"H | 31"D | 22"SD | 18"SH | 29.5"W | 27"AH

OLIVIA SERIES

FINISHES: Custom lacquer finish to match UV colors



LOUNGE 27"H | 25.75"D | 19"SD | 16.5"SH | 31"W
26.5"AH | 19.75"SW

THEO SERIES

FINISHES: Custom lacquer finish to match UV colors



LOUNGE 32.75"H | 28.25"D | 19.25"SD | 17.75"SH | 28.25"W
25.5"AH | 24.25"SW

WESTON SERIES

FINISHES: Custom lacquer finish to match UV colors



LOUNGE 36"W | 30.75"D | 28.5"H

SERENA SERIES

FINISHES: Custom lacquer finish to match UV colors



LOUNGE 33"H | 33"D | 21.75"SD | 19"SH | 31.5"W
26.5"AH | 25.5"SW

CYRUS SERIES

FINISHES: Custom lacquer finish to match UV colors



LOUNGE 42.25"H | 34.25"D | 21.75"SD | 19"SH | 31.5"W
26.5"AH | 25.5"SW

JASMIN SERIES

FINISHES: Custom lacquer finish to match UV colors



LOUNGE 35.75"H | 31.25"D | 21.5"SD | 17.25"SH | 26.5"W
23.5"AH | 21.25"SW

VENUS SERIES

FINISHES: Custom lacquer finish to match UV colors



LOUNGE 29.5"H | 29.25"D | 22.75"SD | 18.75"SH | 24.25"W
28"AH | 22.75"SW

MARCO SERIES

FINISHES: Custom lacquer finish to match UV colors



LOUNGE 36.75"H | 35.75"D | 22"SD | 19.75"SH | 31"W | 27.25"AH | 21.25"SW

ABBEY



17.75"H | 17"D | 17"W

ASHLEY



17.5"H | 16"D | 16"W

LIAM



17.5"H | 16"W

KAI WITH LEGS

LEG FINISHES: Custom lacquer finish to match UV colors



17"H | 29.5"W

KAI WITH GLIDES



14"H | 29.5"W

DALIA



19"H | 22"D | 24"W

AMIR



17"H | 24"W

CAMILLE



17"H | 17"D | 31"W

CAMILLE TUFTED



17"H | 17"D | 31"W

BEDFORD LOUNGE SERIES

UV

UV FINISHES: UV FINISHES: 14 Standard Finishes, 1 Premium Finish (Black)

STANDARD WITH: Pullover Seat Over Upholstered Back



XL DINING 24.25"W | 25"D | 37.75"H | 19"SH | 18"SD

LOUNGE 24.25"W | 24"D | 34.75"H | 17.5"SH | 17.75"SD

BEDFORD DOUBLE LOUNGE SERIES

LACQUER

LACQUER FINISHES: Finished to match any standard GAR finish

STANDARD WITH: Pullover Seat Over Upholstered Back



XL DOUBLE 48"W | 25"D | 38"H | 19.5"SH | 17.5"SD

LOUNGE DOUBLE 48"W | 24"D | 34.5"H | 19.5"SH | 18"SD

CARNEGIE BORNE SETTEE

LACQUER

LACQUER FINISHES: Finished to match any standard GAR finish

STANDARD WITH: Channeled Back and Seat with Pleated Tufting Edge Detail

OPTIONAL WITH: (4) Bolsters, (4) 16" x 16" and (4) 12" x 12" Pillows



BORNE SETTEE 36"H | 18"SH | 56.25"D

COOPER TUB CHAIR

LACQUER

LACQUER FINISHES: Finished to match any standard GAR finish

STANDARD WITH: Strap Webbing with Sewn Loose Cushion

OPTIONAL WITH: (2) 12" x 12" Pillows



TUB CHAIR 34"W | 32"D | 31"H | 17"SH | 23"SD | 31"AH

LEXINGTON LOUNGE CHAIR

LACQUER

LACQUER FINISHES: Finished to match any standard GAR finish

STANDARD WITH: Webbed Seat with Sewn Pullover Cover and Wood Trim Back Detail

OPTIONAL WITH: Box Tufting or 29" x 7" Bolster Pillow



LOUNGE 30"W | 30.125"D | 32.5"H | 18"SH | 20.5"SD

MORGAN CLUB LOUNGE

LACQUER

LACQUER FINISHES: Finished to match any standard GAR finish

STANDARD WITH: Webbed Seat with Sewn Pullover Cover and Wood Trim Back Detail

OPTIONAL WITH: 22" x 7" Bolster Pillow



LOUNGE 31"W | 34"D | 31.5"H | 18"SH | 23"SD | 23.25"AH

THOMPSON WING CHAIR

LACQUER

LACQUER FINISHES: Finished to match any standard GAR finish

STANDARD WITH: Tight Seat Over Deck

OPTIONAL WITH: 22" x 10" Pillow



WING CHAIR 30"W | 30.25"D | 32.5"H | 18"SH | 20.5"SD

THOMPSON ARM AND SIDE CHAIR

LACQUER

LACQUER FINISHES: Finished to match any standard GAR finish

STANDARD WITH: Webbed Seat with Sewn Loose Seat Cushion



SIDE CHAIR 22"W | 23.5"D | 37.75"H | 18"SH | 16.5"SD

ARMCHAIR 24"W | 26"D | 38"H | 18"SH | 17.75"SD | 26.5"AH

INDOOR TEXTILES

WITH AN ABUNDANCE OF COLOR AND
TEXTURES GALORE, WE HAVE A FABRIC TO
DRESS YOUR NEXT PROJECT.



AISLING WOOL

INDOOR



APPLICATIONS

Hospitality, Contract, Residential Upholstery

GENERAL SPECIFICATIONS

WIDTH	54"
ROLL SIZE	55 - 60 Yards
WEIGHT	10 Ounces per Linear Yard
CONTENT	70% Wool / 20% Polyester / 5% Acrylic / 5% Nylon

PERFORMANCE SPECIFICATIONS

Abrasion Resistance	75,000+ DR per ASTM D4966- 12 Martindale
Seam Slippage	86.9 Warp / 56.0 Fill per ASTM 4034-92
Colorfastness to Crocking	5.0 Dry / 5.0 Wet per AATCC 8-2016
Colorfastness to Light	40 Hours - Class 5 per AATCC 16.3-2014, Option 3

FLAMMABILITY REQUIREMENTS*

California Technical Bulletin No. 117-2013
UFAC Class 1
NFPA 260

CLEANING INSTRUCTIONS

Cleaning Code: S/WS
Spot clean using water-free solvent or dry cleaning product.
Cleaning by a professional service is recommended.



*WOOL
BLENDS AS
PLEASING
TO SIT ON
AS THEY
ARE TO SAY.*

DROMORE



LILT



CLARE



CLADOIR



ERIN



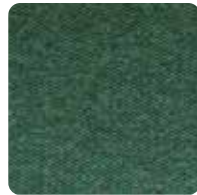
COLLEEN



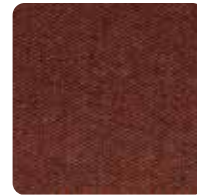
TEEGAN



BRIGID



INIS



SCARLETT



DERRY



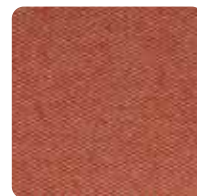
ARAN



MEARA



KERRY



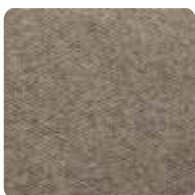
SIXPENCE



SHILLING



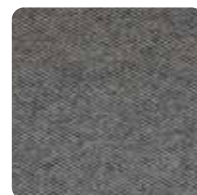
GAEL



CASTLEROCK



LACHLAN



SAORSE



BLAIR

ARTISTS GUILD

INDOOR



APPLICATIONS

Hospitality, Contract, Residential Upholstery

GENERAL SPECIFICATIONS

WIDTH	54"
ROLL SIZE	Approx. 50 Yards
WEIGHT	19 / 20 Ounces per Linear Yard
CONTENT	92% Polyester / 8% Linen
FINISH	Resilience TX

PERFORMANCE SPECIFICATIONS

Abrasion Resistance	100,000+ DR per ASTM D4157 Wyzenbeek (#10 Cotton duck)
Seam Slippage	144.2 Warp / 128.2 Fill per ASTM 4034
Colorfastness to Crocking	4.5 Dry / 5.0 Wet per AATCC 8
Colorfastness to Light	40 Hours - Class 4 per AATCC 16

FLAMMABILITY REQUIREMENTS*

California Technical Bulletin No. 117-2013
UFAC Class 1
NFPA 260

CLEANING INSTRUCTIONS

Cleaning Code: S
Spot clean using water-free solvent or dry
cleaning product.
Cleaning by a professional service is recommended.

PROP 65 WARNING: This product may contain a chemical known to the State of California to cause cancer and birth defects or other reproductive harm.

*This term and any corresponding data refer to typical performance in the specific test indicated and should not be construed to imply the behavior of this or any other material under actual fire conditions.

*THIS SUBTLE
LINEN-LIKE
TEXTURE IS A
REAL WORK
OF ART.*



DÜRER



CARAVAGGIO



TITIAN



GOYA



RUBENS



BOSCH



RAPHAEL



CAMPIN



EL GRECO



REMBRANDT



DI VINCI

ELOQUENCE

INDOOR



APPLICATIONS

Hospitality, Contract, Residential Upholstery

GENERAL SPECIFICATIONS

WIDTH	54"
ROLL SIZE	Approx. 50 - 60 Yards
WEIGHT	15 / 16 Ounces per Linear Yard
CONTENT	100% Polyester
FINISH	Resilience TX

PERFORMANCE SPECIFICATIONS

Abrasion Resistance	100,000+ DR per ASTM D4157 Wyzenbeek (#10 Cotton duck)
Seam Slippage	96.7 Warp / 120.0 Fill per ASTM 4034
Colorfastness to Crocking	4.5 Dry / 5 Wet per AATCC 8
Colorfastness to Light	40 Hours - Class 4.5 per AATCC 16

FLAMMABILITY REQUIREMENTS*

California Technical Bulletin No. 117-2013
UFAC Class 1
NFPA 260

CLEANING INSTRUCTIONS

Cleaning Code: S
Spot clean using water-free solvent or dry
cleaning product.
Cleaning by a professional service is recommended.

PROP 65 WARNING: This product may contain a chemical known to the State of California to cause cancer and birth defects or other reproductive harm.

*This term and any corresponding data refer to typical performance in the specific test indicated and should not be construed to imply the behavior of this or any other material under actual fire conditions.

*PART
MODERN.
PART
CLASSIC.
ALWAYS
TIMELESS.*



STOIC



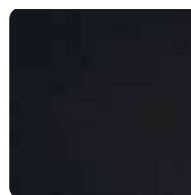
FETCHING



SUBLIME



ELIXIR



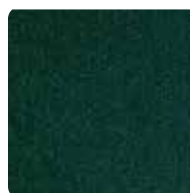
OPULENT



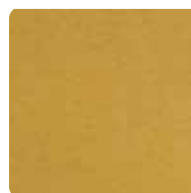
NIRVANA



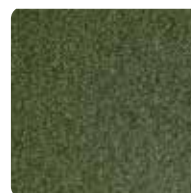
PERSUASION



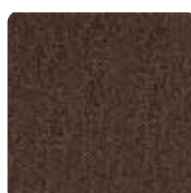
BUCOLIC



LUMEN



ETHEREAL



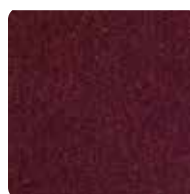
BROOD



ELYSIAN



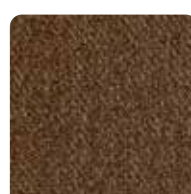
GREGARIOUS



RADIANCE



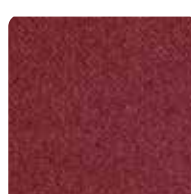
EPOCH



SONNET



QUINTESSENTIAL



SEDUCTRESS



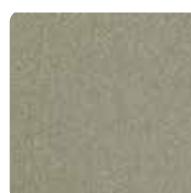
SERENDIPITY



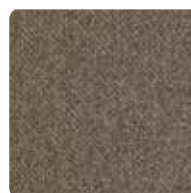
MATRIARCH



WHEREWITHAL



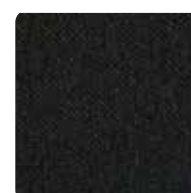
ARCADIAN



GRACIOUS



SONDER



WISTFUL

EXPRESSIONS

INDOOR

*AVAILABLE
IN EVERY
COLOR
UNDER
THE SUN.*



APPLICATIONS

Hospitality, Contract, Residential Upholstery

GENERAL SPECIFICATIONS

WIDTH	54"
ROLL SIZE	55 Yards
WEIGHT	15 / 16 Ounces per Linear Yard
CONTENT	70% Wool / 20% Polyester / 5% Nylon / 5% Acrylic

PERFORMANCE SPECIFICATIONS

Abrasion Resistance	100,000+ Cycles per ASTM D4966-12 Martindale
Seam Slippage	61.1 Warp / 41.6 Fill per ASTM D4034
Colorfastness to Crocking	5 Dry / 4 Wet per AATCC 8
Colorfastness to Light	40 Hours - Class 4.0 per AATCC 16

FLAMMABILITY REQUIREMENTS*

California Technical Bulletin No. 117-2013
UFAC Class 1
NFPA 260

CLEANING INSTRUCTIONS

Cleaning Code: S
Spot clean using water-free solvent or dry cleaning product.
Cleaning by a professional service is recommended.

PROP 65 WARNING: This product may contain a chemical known to the State of California to cause cancer and birth defects or other reproductive harm.

*This term and any corresponding data refer to typical performance in the specific test indicated and should not be construed to imply the behavior of this or any other material under actual fire conditions.



BIRDS & BEES



SKY'S THE
LIMIT



STEEL MY
THUNDER



APPLE A DAY



BATTLE ROYAL



CROCODILE
TEARS



POTATO,
POTAHTO



SCOUT'S
HONOR



CLOSE BUT NO
CIGAR



BACK TO
BASICS



EASY AS PIE



IT'S
WITCHCRAFT



ABRACADAB-
RA



DEVIL'S
ADVOCATE



PACK LEADER



WHITE BREAD



GREASED
LIGHTENING



ALL BARK



HANKY PANKY



PINE AWAY



BROWNIE
POINTS



OH NO SHE
DIDN'T



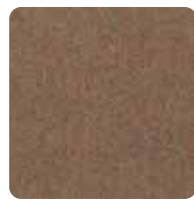
FILTHY RICH



INDIAN
SUMMER



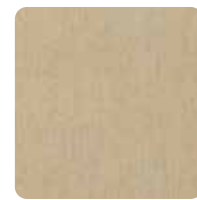
DINNER AND
A SHOW



BAKER'S DOZ-
EN



WILD BLUE
YONDER



CATCH 22

DAPPER

INDOOR



*THIS VELVET
IS ALL DRES-
SED UP WITH
EVERYWHERE
TO GO.*

APPLICATIONS

Hospitality, Contract, Residential Upholstery

GENERAL SPECIFICATIONS

WIDTH	54"
ROLL SIZE	Approx. 30 - 35 Yards
WEIGHT	20 / 21 Ounces per Linear Yard
CONTENT	60% Acrylic / 40% Polyester
FINISH	Resilience TX

PERFORMANCE SPECIFICATIONS

Abrasion Resistance	100,000+ DR per ASTM D4157
Seam Slippage	Wyzenbeek (#10 Cotton duck)
Colorfastness to Crocking	93.4 Warp / 92.3 Fill per ASTM 4034
Colorfastness to Light	4.5 Dry / 4.5 Wet per AATCC 8
	40 Hours - Class 5 per AATCC 16

FLAMMABILITY REQUIREMENTS*

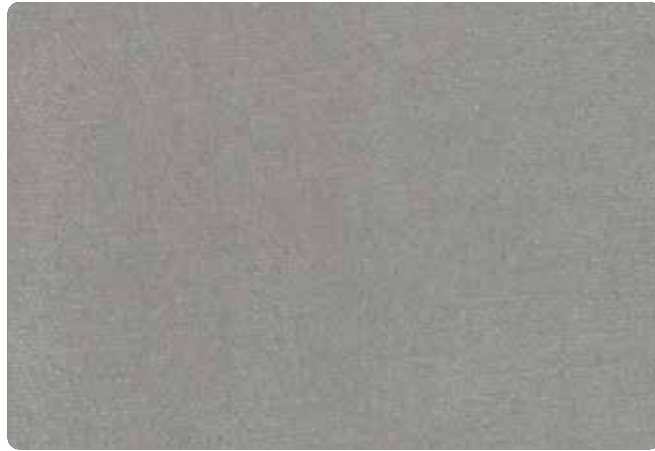
California Technical Bulletin No. 117-2013
UFAC Class 1
NFPA 260

CLEANING INSTRUCTIONS

Cleaning Code: S
Spot clean using water-free solvent or dry
cleaning product.
Cleaning by a professional service is recommended.

PROP 65 WARNING: This product may contain a chemical known to the State of California to cause cancer and birth defects or other reproductive harm.

*This term and any corresponding data refer to typical performance in the specific test indicated and should not be construed to imply the behavior of this or any other material under actual fire conditions.



DIVINE INTERVENTION



LA VIE EN ROSE



FRENCH PRESS



TWO TO TANGO



SILK ROAD



LET THEM EAT CAKE



OCTOBER'S LIGHT



ABYSSINIAN



KENTUCKY DERBY



BONNE NUIT



WHERE THERE'S SMOKE



MOURNING DOVE



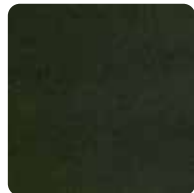
OLD BLUE EYES



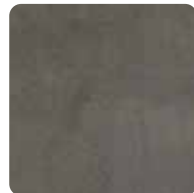
OLDE TIMES SAKE



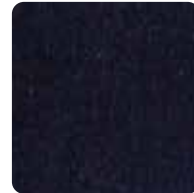
QUEEN OF SCOTS



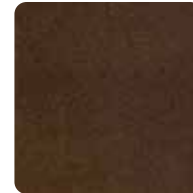
GARDEN OF EDEN



SILVER PLATTER



STROKE OF MIDNIGHT



SOY LATTE



TO WHOM IT MAY CONCERN



MISS ELLEN'S PORTIERS



GINGER JAR



ABSINTHE



SMOKING JACKET



GERMAN BEARDED IRIS



RIDING HOOD



VELVET UNDERGROUND



PUNCH BOWL SOCIAL



FAWN OVER

ANDOVER

INDOOR



COMFORT & STYLE IN ALL THE RIGHT PLACES

APPLICATIONS

Hospitality, Contract, Healthcare, Special & Industrial

GENERAL SPECIFICATIONS

WIDTH	54"
ROLL SIZE	30 Yards
WEIGHT	30 Ounces per Linear Yard
BACKING	100% Polyester Knit
SURFACE	100% PVC
FINISH	Resilience SR Protection

PERFORMANCE SPECIFICATIONS

Abrasion Resistance	250,000+ DR per ASTM D4157 Wyzenbeek / CFFA-6
Other Performance	Anti-Bacterial / Anti-Microbial
Cold Crack	-20° F Federal Standard No. 191A-Method 5874 / CFFA-6

FLAMMABILITY REQUIREMENTS*

California Technical Bulletin No. 117-2013
UFAC Class 1
NFPA 260
IMO A.652
Boston Fire Dept. BFD-IX-1
Port Authority of NY/NJ
MVSS302

CLEANING INSTRUCTIONS

Prompt cleaning is always recommended. Ordinary dirt and stains can be removed with mild soap and water. Rinse the cleaned area with clean water and dry with a lint free cloth.



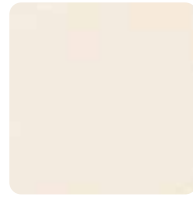
BEIGE



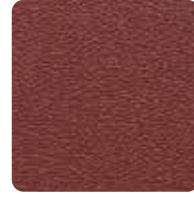
DOESKIN



CINNAMON



ALABASTER



CLAY



WHITE



TOMATO



FLAME



BURGUNDY



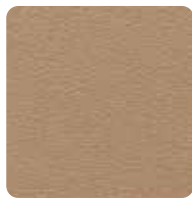
SADDLE



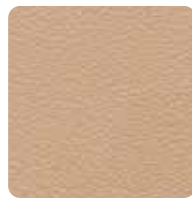
PEARL



BROWN



KHAKI



SHELL



SILVER



COFFEE



TAN



CHARCOAL



STERLING



SLATE



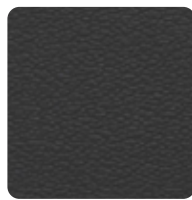
DELFT



NAVY



COAL



JET



CAMEL



GRASS



SPRUCE

GARHYDE

INDOOR



APPLICATIONS

Hospitality, Contract, Special & Industrial Upholstery

GENERAL SPECIFICATIONS

WIDTH	54"
ROLL SIZE	40 Yards
WEIGHT	28 Ounces per Linear Yard
BACKING	100% Polyester Knit

PERFORMANCE SPECIFICATIONS

Abrasion Resistance	50,000+ DR per ASTM D4157-92 Wyzenbeek / CFFA-1A
Ultra Violet Resistant	200 Hours ASTM G26-96 Method C / CFFA-2
Cold Crack	-10° F Federal Standard No. 191A-Method 5874 / CFFA-6

FLAMMABILITY REQUIREMENTS*

California Technical Bulletin No. 117-2013
BIFMA X5.7-1991 Section 4
UFAC Class 1
NFPA 260

CLEANING INSTRUCTIONS

Prompt cleaning is always recommended.
Ordinary dirt and stains can be removed with mild soap and water. Rinse the cleaned area with clean water and dry with a lint free cloth.

PROP 65 WARNING: This product may contain a chemical known to the State of California to cause cancer and birth defects or other reproductive harm.

*This term and any corresponding data refer to typical performance in the specific test indicated and should not be construed to imply the behavior of this or any other material under actual fire conditions.



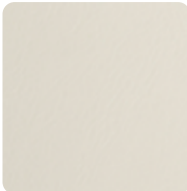
*ORDINARY TO
EXTRAORDINARY*



WHITE



BEIGE



ALABASTER



CLARET



CHESTNUT



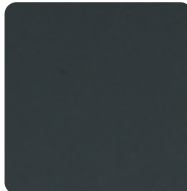
TAN



CRIMSON



BRICK



CHARCOAL



GREY



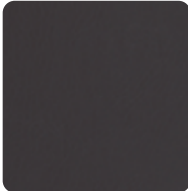
PLATINUM



BURGUNDY



HUNTER



BROWN



BLACK



NAVY

MODENA

INDOOR

*QUALITY AND
COMFORT THAT
LOOK AND FEEL
THIS GOOD*

APPLICATIONS

Hospitality, Contract, Special & Industrial Upholstery

GENERAL SPECIFICATIONS

WIDTH	54"
ROLL SIZE	30 Yards
WEIGHT	26 Ounces per Linear Yard
BACKING	Hi-Loft ² ™ (100% Polyester Knit)

PERFORMANCE SPECIFICATIONS

Abrasion Resistance	100,000 cycles, CFFA-1A / ASTM D4157-92 Wyzenbeek (#10 Cotton Duck)
Ultra Violet Resistant	1000 Hours AATCC TM 16-3 / NTC 1479 / CFFA-2 a1
Cold Crack	-10° F / CFFA-6a

FLAMMABILITY REQUIREMENTS*

California Technical Bulletin No. 117-2013
UFAC Class 1
NFPA 260 - Cover Fabric - Class 1

CLEANING INSTRUCTIONS

Prompt cleaning is always recommended. Ordinary dirt and stains can be removed with mild soap and water. Rinse the cleaned area with clean water and dry with a lint free cloth.

PROP 65 COMPLIANT

*This term and any corresponding data refer to typical performance in the specific test indicated and should not be construed to imply the behavior of this or any other material under actual fire conditions.



FARRO



BLUEBIRD



TANDOORI



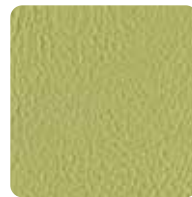
MANDARIN



CHAMPAGNE



MEDALLION



FRESH



SEAGRASS



SANCTUARY



CYPRESS



AZURE



ERIE



TITAN



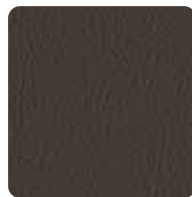
INK



HAZE



BOHEMIAN



TWILIGHT



COGNAC



NUTMEG



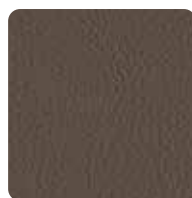
PEARL



AUSTER



ELEPHANT



COCOA



SIDEWALK



GRAPHITE



BLACK

*Images are for reference only and not intended as an exact replica of the actual color of the product.



INDOOR TABLE BASES

FSB SERIES



FSB SQUARE	FRAME	BLACK	SILVER
18" 21"			

NOTE: Zinc undercoated for indoor/outdoor use.



FSB EB	FRAME	BLACK	SILVER
18"x9"			

NOTE: Zinc undercoated for indoor/outdoor use.



FSB RECTANGLE	FRAME	BLACK	SILVER
27" x 18"			

NOTE: Zinc undercoated for indoor/outdoor use.

FSB SERIES



FSB ROUND		FRAME	BLACK	SILVER
18" 21" 26" 29 1/2"				

NOTE: Zinc undercoated for indoor/outdoor use.



FSB TRIPLE ROUND		FRAME	BLACK
36" 40"			

NOTE: Zinc undercoated for indoor/outdoor use.



FSB UMBRELLA		FRAME	BLACK	SILVER
18" 21" 22" 29.5"				

NOTE: Zinc undercoated for indoor/outdoor use.

500 SERIES

TRENDING



500 SQUARE
17" X 17" 22" X 22"
COATED MILD STEEL

NOTE: For indoor use only.



500 DOUBLE RECT.
27.5" x 16"
COATED MILD STEEL

NOTE: For indoor use only.

500 SERIES

TRENDING



500 ROUND
17" 22"
COATED MILD STEEL

NOTE: For indoor use only.



500 EB
18" x 9"
COATED MILD STEEL

NOTE: For indoor use only.



500 TRIPLE RND
28.5"
COATED MILD STEEL

NOTE: For indoor use only.

VINTAGE SERIES



ANTOINETTE SERIES
22" 26" 32"
BLACK TEXTURE



DANTE SERIES
24"
BLACK SEMI GLOSS



ANTOINETTE EB
21"
BLACK TEXTURE



EVA SERIES
15"
BLACK SEMI GLOSS



ARIEL SERIES
24"
BLACK SEMI GLOSS



FRANZ SERIES
15"
BLACK SEMI GLOSS



CLARISSE SERIES
17"
BLACK SEMI GLOSS



HUGO SERIES
15"
BLACK SEMI GLOSS

VINTAGE SERIES



JAVIER SERIES
19"
BLACK SEMI GLOSS



PITTI SERIES
24"
BLACK SEMI GLOSS



JULIET SERIES
24"
BLACK SEMI GLOSS



RAFAEL SERIES
19"
BLACK SEMI GLOSS



PIETA SERIES
15"
BLACK SEMI GLOSS



TANGO SERIES
19"
BLACK SEMI GLOSS

GAR Products® Vintage table bases come with their own unique decorative standard height columns with decorative bar height columns also available for the Ariel, Dante, Eva, Franz, Hugo, Juliet, Pieta and Rafael style bases. The Antoinette, Clarisse, Pitti, Maria and Tango are available in bar height with a plain, non-decorative column.

ROUND SERIES



9000 SERIES
18" 20" 22" 26" 30"
BLACK TEXTURE

CROSS SERIES



900 SERIES
24" x 30" 22" 30" 36"
BLACK TEXTURE

NOTE: Also available as End-Base.

FOUR LEG TABLE FRAME



FOUR LEG TABLE FRAME
36" x 36"
POWDER COATED

NOTE: ADA compliant.

NOTE: Standard with umbrella hole.
Not ADA compliant if the umbrella hole is used.

STAINLESS STEEL SERIES

Suitable for indoor/outdoor use



FSS SQUARE SERIES
18" 21"
STAINLESS STEEL



FSS ROUND SERIES
18" 21" 29 1/2"
STAINLESS STEEL



FSS RECTANGLE SERIES
18" x 27 1/2"
STAINLESS STEEL
STANDARD WITH TWO COLUMNS



FSS TRIPLE ROUND SERIES
29 1/2"
STAINLESS STEEL
STANDARD WITH THREE COLUMNS

BOLT DOWN SERIES



1800 BOLT DOWN SERIES
TULIP COVER
7 5/8"
BLACK TEXTURE

NOTE: Also available as core drill



1800 BOLT DOWN SERIES
FLAT COVER
8"
BLACK TEXTURE

NOTE: Also available as core drill

All design, heavyweight and professional line table bases can be customized with larger column diameters and glide options, and cut down to any specified height for additional charges.



INDOOR TABLE TOPS



Thinscape Tabletop
Bistro North

WOOD EDGE



We offer a wide variety of mitered Wood Edge table tops in Red Oak, Maple and Ash wood options. Our tops are manufactured with a choice of either a horizontal grade laminate or veneer top surface as chosen by you, and bonded to a 45-pound high-density particle board with a phenolic backing sheet. All wood edges are available to match our UV house finishes, standard with a catalyzed conversion satin sheen finish. Custom finishes are also available on request.

Please note the edge wood grains will vary slightly from the European Beech wood used for our wood furniture.

All Wood Edge table tops are FOB PA.

NOTE: Crating fees may apply.

CHOOSE YOUR EDGE

From a variety of edge profiles for each style.

BULLNOSE



1/4" RADIUS



INVERTED KNIFE



BEVELED



HALF BULLNOSE



WIDE BULLNOSE



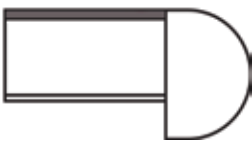
MINI 1/4" EDGE
DETAIL



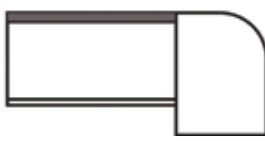
BEVELED TOP AND
BOTTOM



BULLNOSE DROP



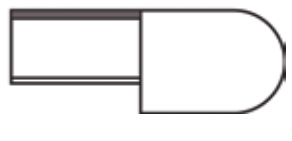
HALF BULLNOSE
DROP



1/4" EDGE DETAIL
DROP



GIANT BULLNOSE



ROMAN OGEE



OGEE-B



WIDE EASED TOP/
BOTTOM



If you have any queries about selecting an edge profile, our sales reps and customer service associates can help you. For more options and finish color choices, please refer to our Price List or our website.

SOLID WOOD



SOLID PLANK WOOD



SOLID BUTCHER BLOCK

We offer Solid Wood table tops in both Butcher Block and Plank construction in Red Oak or Maple wood species.

Solid Plank Wood tops are constructed with wood planks in equal length and random widths, laid edge to edge in a variety of top sizes in either a 1¹/₄" or 1³/₄" thickness.

Continuous Butcher Block Solid Wood tops are constructed with uniform widths of solid wood, laid back to back in a continuous pattern.

Continuous Butcher Block tops are available in a variety of top sizes with either a 1¹/₂" or 1³/₄" thickness.

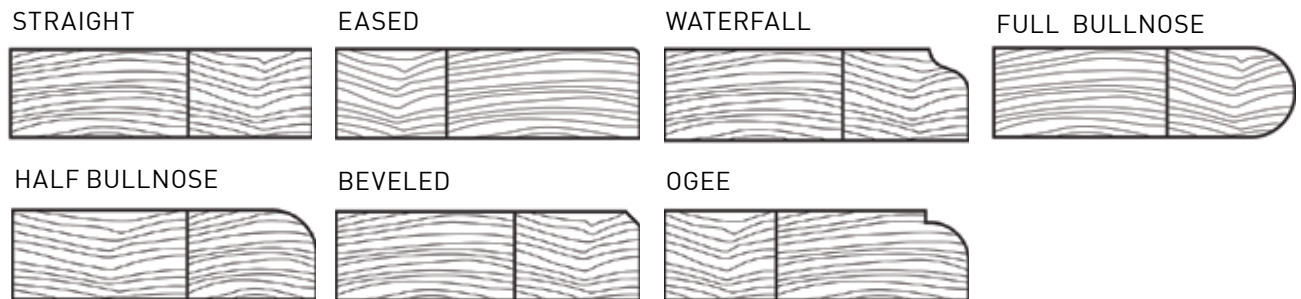
The choice of stain to match GAR UV or lacquer finish colors are standard on all Solid Wood table tops. Custom stains are also available on request. All Solid Wood tops come standard with a durable Catalyzed Conversion Varnish.

All Solid Wood table tops are FOB WI.

NOTE: Crating fees may apply.

SOLID WOOD PLANK EDGE PROFILES

WOOD SPECIES AVAILABLE: MAPLE, BIRCH, WALNUT, OAK, MULTI



SOLID WOOD BUTCHER BLOCK EDGE PROFILES

WOOD SPECIES AVAILABLE: MAPLE, WALNUT, OAK



METAL EDGE



GAR Products offers smooth or fluted edges available in satin or polished finish options. Metal edge tops are offered with your selection of horizontal laminate or veneer surface and then bonded to 45-pound high-density particle board with a phenolic backing sheet.

All Metal Edge table tops are FOB PA.

NOTE: Crating fees may apply.

CHOOSE YOUR EDGE

SMOOTH



FLUTED



PADDED EDGE



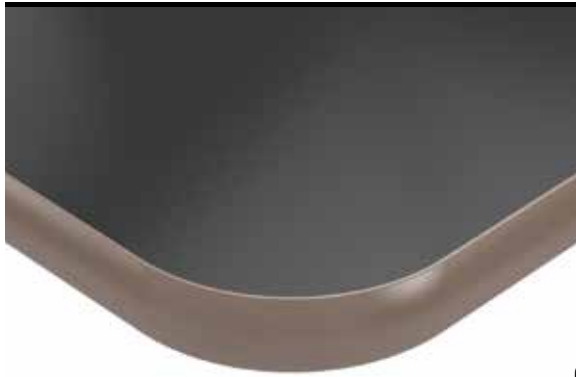
Padded table tops help eliminate the clattering sounds of china, stemware and silverware, offering your guests a silent fine dining experience. GAR Products® Padded Edge table tops are made of high density particle board wrapped with foam and covered with vinyl. The standard vinyl is Garyhde White. A custom plywood substrate is also available on request. All square to round Padded Edge table tops come standard with two table top hinges and one slide bar per leaf. Please note that round table tops with a diameter of 54" or larger will have a seam in the padding.

All Padded Edge table tops are FOB NJ.

THICKNESS: 1.125"

NOTE: Crating fees apply.

SYNTHETIC EDGE



We offer three types of Synthetic Edge table tops: 3mm PVC, Vinyl Bullnose or Special Vinyl Bullnose edges, each available in a variety of colors. Our synthetic edge tops are manufactured to be used with either horizontal grade laminate or veneer surface. Top layer is bonded to 45-pound high-density particle board with a phenolic backing sheet.

All Synthetic Edge table tops are FOB PA.

NOTE: Crating fees may apply.

CHOOSE YOUR EDGE

VINYL BULLNOSE



SPECIAL VINYL BULLNOSE



3MM PVC



SELF EDGE



GAR Products® Self Edge table tops are an economical solution to wood table tops. Available with a variety of edge options, and with the choice of either a veneer or horizontal grade laminate surface and edge, these tops are the perfect solution for budget projects.

All Self Edge table tops are FOB PA.

NOTE: Crating fees may apply.

CHOOSE YOUR EDGE

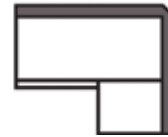
SQUARE CORNERS



3" RADIUS CORNERS



2" DROP EDGE



PLYWOOD EDGE



Plywood edge table tops offer a harmonious blend of rustic charm and modern functionality. These tabletops showcase a raw elegance, perfect for both industrial-chic and minimalist interiors. Plywood edge tops are offered with your selection of horizontal laminate surface and then bonded to 45-pound high-density particle board with a phenolic backing sheet.

All Plywood Edge table tops are FOB PA.

NOTE: Crating fees may apply.

CHOOSE YOUR EDGE

BULLNOSE



KNIFE



THINSCAPE™



GAR Products® is now offering Wilsonart THINSCAPE™. THINSCAPE™ is a composite material constructed with layers of papers and resin, creating a 0.5" thick table top that appeals to both contemporary and classic design choices. Standard with 0.75" MDO plywood substrate. It can be used for indoor and outdoor use, but will fade overtime if exposed to direct sunlight.

All THINSCAPE™ table tops are FOB NJ.

AVAILABLE COLORS

BLACK AMANI



CALCUTTA BLANC



ITALIAN CARRARA



QUARTZ RAPIDS



QUARTZITE FALLS



SOLUNA



RUGGED STEEL



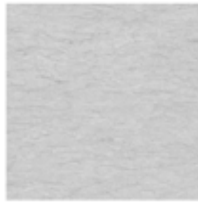
SOAPSTONE MIST



SOLENNE MARBLE



SPANISH LIMESTONE



STERLING CALCUTTA



SEA LINE MIST



TAJ MAHAL



TORTONA QUARTZITE



VOLAKAS MARBLE



PIETRA NOIR



If you have any queries about selecting an edge profile, our sales reps and customer service associates will help you. For more options and finish color choices, please refer to our Price List or our website.

IT'S ALL IN THE DETAILS

TABLE GLIDES



TABLE SHOx



STEEL



NYLON

SPIDERS



9" SPIDER



15" SPIDER



19" SPIDER

TABLE MOUNTS



CANTILEVER SERIES	
WALL	16" x 33" 16" x 21"
FLOOR	28" x 32" 28" x 18"
BLACK	

Floor mounted cantilevers are also available.

COLUMNS



STANDARD HT SERIES
2" 3" 4"
BLACK

NOTE: Bar Height also available.



TELESCOPING SERIES
30" or 39 1/2" 20 1/8" or 27 3/4"
BLACK TEXTURE

LEGS



PIN LEG SERIES
BOLT DOWN OR WITH GLIDE
BLACK

NOTE: Bar Height also available.

FOOTRESTS AND FOOTRINGS



FOOTRING SERIES
WAGON WHEEL 14" 19"
BLACK



FOOTRING SERIES
STAND UP 22"
BLACK



FOOTREST SERIES
TRIANGULAR
BLACK

NOTE: Only for use on Bolt Down Bases.

DETAILS

LITTLE EXTRAS

NAILHEADS

Most of our chairs can be designed to accommodate decorative nailhead trimmings. Never laid out by machine, our craftspeople apply nailheads by hand, individually, in a nail-to-nail pattern.



FOOTRINGS

All our circular barstools come standard with brass-plated footrings. You can also change them to chrome at no extra charge.

GLIDES

All our wood chairs come standard with nylon glides. For an additional charge, glides can be upgraded to felt-tip or rubber cushion.

LEG PROTECTORS

Leg protectors go a long way in conserving the finish of your chair or barstool. Available in black or opaque. NOTE: All leg protectors must be installed with a heat gun or can be factory installed.

FOOTRESTS

Each of our barstools comes with a brass footrest. You can choose from any of the finishes on the left at no extra cost. You can also upgrade to a U-Channel in lieu of a standard footrest on select models.

CASTERS

Adding front leg casters to your chair can make it more accessible. Easy to use and move. Ask your sales rep or the GAR customer service team which of our chairs can accept front casters.

**OUR STANDARD
NAIL FINISH IS
ANTIQUE BRASS.
ALL OTHER
FINISHES ARE
AVAILABLE AT
NO EXTRA COST.**



SMOOTH
CHROME



SPECKLED #8



ANTIQU
PEWTER



PEARL
GREY



PEWTER #1



OLD
COPPER



ANTIQU
BRASS



SMOOTH
BRASS



PEWTER #2



CASTERS



NYLON



FELT TIP



RUBBER CUSHION



FOOTRING



BLACK



OPAQUE

BLACK



CHROME



NICKEL



BRASS



COPPER



FINISHES

ULTRAVIOLET

Our patented ultraviolet finishing process to apply sealants and top coatings to our furniture is one of the most cutting-edge systems in the market today. The finishes used by most furniture manufacturers emit Volatile Organic Compounds (VOCs), which can escape as airborne pollutants and toxins that are harmful to humans. Our process captures 97% of these toxic VOCs by using specially formulated water-based finishes that are cured in seconds with ultraviolet energy. And being nearly 13 times cleaner than the strictest pollution control regulations in the U.S., it's better for the planet too.

Wood is a product of nature, which varies from tree to tree and piece to piece. The beauty of wood is its grain. The samples displayed are digital photographs of our UV house finishes shown on Beech wood. Actual finish samples and products may vary. Wood samples are available upon request.

**MORE DURABLE AND LONG LASTING.
HIGH ABRASION AND STAIN RESISTANCE.
ENHANCED COLOR CLARITY AND DEPTH.
INHERENT WATER RESISTANCE.
ENVIRONMENTALLY SAFE.
INSTANTANEOUS CURE TIME.**

FINISHES

LACQUER

Many of our models come with a pre-finished lacquer finish. Hard and durable, lacquer remains the choice finish material for furniture because it blends well with the natural grain and coloring of numerous wood species, and is quick to dry. It also gives a smoother and more polished surface than water-based coating systems and can be buffed to a beautiful high gloss once cured.

Lacquer finishes vary from model to model based on the country of origin of our frame builder. Due to the difficulty in maintaining lacquer finish consistencies across multiple sources, GAR Products® will not be responsible for finish variances.

**LACQUER FINISHES
OPTIONS VARY BY
MODEL.**





UV BLACK
(PREMIUM)



UV ANILINE
BLACK



UV EBONIZED
WALNUT



UV ESPRESSO



UV CHESTNUT



UV NUTMEG



UV SADDLE



UV TOFFEE



UV HONEY OAK



UV WALNUT



UV WHEAT



UV DRIFTWOOD



UV NATURAL

SELECT ONE OF
OUR 15 HANDSOME
FINISHES, OR OPT
FOR A COMPLETELY
CUSTOM LOOK WITH
OUR PATENTED UV
PROCESS THAT
RESISTS STAINS,
WATER AND FADING
TO LAST FOR YEARS.

OUTDOOR SEATING

ON THE VERANDA OR AROUND THE DINING TABLE OUR VERSATILE OUTDOOR COLLECTIONS ARE WINNERS INSIDE OR OUT.

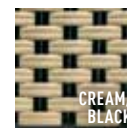




831 & 2831 COLLECTION

FEATURES

- Suitable for indoor and outdoor applications
- Rusts-proof aluminum frame
- Seat and frame woven with durable resin strands
- Stackable side chair



WOVEN



831
SIDE CHAIR
19 1/2"W 22"D 35 1/4"H 18"SH



2831
BARSTOOL
19"W 21 1/2"D 45 1/2"H 30"SH

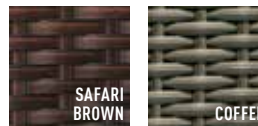


THE ASBURY COLLECTION


WOVEN

FEATURES


- Suitable for indoor and outdoor applications
- Rust proof aluminum frame woven with durable resin strands
- Finishes with decorative stainless steel ferrules
- Stackable side chair and armchair



WOVEN RESIN

ASBURY	
SIDE CHAIR	
18"W 25"D 34 ¹ / ₄ " H 17 ¹ / ₂ " SH	




ASBURY	
ARMCHAIR	
23 ¹ / ₂ " W 26" D 34 ¹ / ₂ " H 20" SH 25 ³ / ₄ " AH	



ASBURY
BARSTOOL
17"W 22 ¹ / ₂ " D 44"H 30" SH



ASBURY	
LOUNGE	
27 ¹ / ₂ " W 26" D 34 ¹ / ₂ " H 18" SH 25 ³ / ₄ " AH	



ASBURY
BACKLESS BAR
17 ¹ / ₂ " W 17 ¹ / ₂ " D 29 ¹ / ₂ " H 29 ¹ / ₂ " SH



ASBURY
END TABLE
18 ¹ / ₄ " W 18 ¹ / ₄ " D 18 ¹ / ₄ " H



ASBURY
COFFEE TABLE
21 ¹ / ₄ " W 36 ¹ / ₄ " D 18 ¹ / ₂ " H



THE BAYHEAD COLLECTION

WOVEN

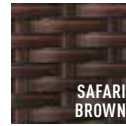
FEATURES

- Suitable for indoor and outdoor applications
- Epoxy powder coated aluminum black frames
- Seat and back available in synthetic teak, performance weave or woven resin strands
- Stainless steel arms
- Stackable side chair and armchair

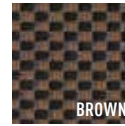
**Avail. end of June*



SYN. TEAK




WOVEN RESIN



PERF. WEAVE




BAYHEAD	
SIDE CHAIR SYNTHETIC TEAK	
18 ¹ / ₂ "W 22 ¹ / ₂ "D 33 ¹ / ₂ "H 17 ¹ / ₂ "SH	

**Available end of June*

BAYHEAD
BARSTOOL SYNTHETIC TEAK
18 ¹ / ₂ "W 23"D 45 ¹ / ₂ "H 30"SH

**Available end of June*



BAYHEAD	
ARMCHAIR SYNTHETIC TEAK	
23 ³ / ₄ "W 21"D 32 ³ / ₄ "H 17 ¹ / ₂ "SH 26 ¹ / ₂ "AH	

**Available end of June*



THE BAYHEAD COLLECTION

WOVEN

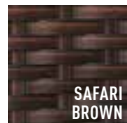
FEATURES

- Suitable for indoor and outdoor applications
- Epoxy powder coated aluminum black frames
- Seat and back available in synthetic teak, performance weave or woven resin strands
- Stainless steel arms
- Stackable side chair and armchair

**Avail. end of June*



SYN. TEAK



WOVEN RESIN



PERF. WEAVE



BAYHEAD	
SIDE CHAIR WOVEN RESIN SAFARI BROWN	
18 ¹ / ₂ " W 22 ¹ / ₂ " D 33 ¹ / ₂ " H 17 ¹ / ₂ " SH	

BAYHEAD	
ARMCHAIR WOVEN RESIN SAFARI BROWN	
23 ³ / ₄ " W 21" D 32 ³ / ₄ " H 17 ¹ / ₂ " SH 26 ¹ / ₂ " AH	



BAYHEAD
BARSTOOL WOVEN RESIN COFFEE
18 ¹ / ₂ " W 23" D 45 ¹ / ₂ " H 30" SH



THE BAYHEAD COLLECTION

WOVEN

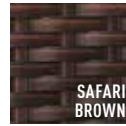
FEATURES

- Suitable for indoor and outdoor applications
- Epoxy powder coated aluminum black frames
- Seat and back available in synthetic teak, performance weave or woven resin strands
- Stainless steel arms
- Stackable side chair and armchair

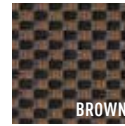
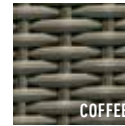
**Avail. end of June*



SYN. TEAK



WOVEN RESIN




PERF. WEAVE



BAYHEAD	
SIDE CHAIR PERF. WEAVE	
18 ¹ / ₂ "W 22 ¹ / ₂ " D 33 ¹ / ₂ " H 17 ¹ / ₂ "SH	

BAYHEAD
BARSTOOL PERF. WEAVE
18 ¹ / ₂ "W 23"D 45 ¹ / ₂ "H 30"SH

BAYHEAD	
ARMCHAIR PERF. WEAVE	
23 ³ / ₄ "W 21" D 32 ³ / ₄ " H 17 ¹ / ₂ "SH 26 ¹ / ₂ "AH	



THE CAMPAIGN COLLECTION

ALUMINUM

FEATURES

- Suitable for indoor and outdoor applications
- Powder coated aluminum frame
- Ferrari Batyline fabric
- Fold-able



CAMPAIGN
ARMCHAIR
21 ¹ / ₂ "W 21"D 33"H 18"SH 24 ³ / ₄ "AH



THE ISLE COLLECTION

ROPE

FEATURES

- Suitable for indoor and outdoor applications
- Electro galvanized steel frame
- Polypropylene and polyester rope box weave seat and back
- Available in Marine Blue, Charcoal and Heather Grey rope



ISLE
BARSTOOL
24 ³ / ₄ "W 25 ¹ / ₂ "D 46 ¹ / ₂ "H 30"SH



ISLE
ARMCHAIR
24 ³ / ₄ "W 24"D 32 ¹ / ₄ "H 18 ¹ / ₂ "SH

35"H | 22"D | 17.75"SH | 22.75"W



ISLE
SIDE CHAIR
22 ³ / ₄ "W 22"D 17 ³ / ₄ "H 35"SH



THE KNOT COLLECTION

ROPE

FEATURES

- Suitable for indoor and outdoor applications
- Electro galvanized steel frame construction with powder coated finish
- Polypropylene and polyester rope box weave seat and back
- Optional Seat Cushion Available
- Stackable

CHARCOAL GREY

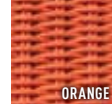
OXIDE



LATTE



CHARCOAL



ORANGE



KNOT	
BARSTOOL	
24 ¹ / ₂ "W 23 ¹ / ₂ "D 42 ¹ / ₂ "H 29"SH	



KNOT	
SIDE CHAIR	
22 ³ / ₄ "W 22"D 35"H 18"SH	



NEW	KNOT	
	HALFBACK BARSTOOL	
24 ¹ / ₂ "W 23 ¹ / ₂ "D 36"H 29"SH		

THE KNOT COLLECTION

ROPE

FEATURES

- Suitable for indoor and outdoor applications
- Electro galvanized steel frame construction with powder coated finish
- Polypropylene and polyester rope box weave seat and back
- Optional Seat Cushion Available
- Stackable

CHARCOAL GREY

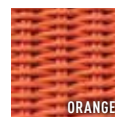
OXIDE



LATTE



CHARCOAL



ORANGE



KNOT
LOUNGE CHAIR
30 ¹ / ₂ "W 31"D 39 ¹ / ₂ "H 18"SH

**Not available in orange rope.*

**Not standard with cushion.*

KNOT
OTTOMAN
21 ¹ / ₄ "W 20 ¹ / ₂ "D 16 ³ / ₄ "H

**Not available in orange rope.*

KNOT
SOFA
56 ¹ / ₄ "W 30"D 39 ¹ / ₂ "H 17 ¹ / ₂ "SH

**Not available in orange rope.*

**Upholstery optional.*



THE LURE COLLECTION

FEATURES

- Suitable for indoor and outdoor applications
- Solid genuine teak frame construction in 'Thai Teak' finish
- Polypropylene and polyester rope box weave seat and back
- Stackable

TEAK




ROPE



LURE
BARSTOOL
20"W 24 ¹ / ₄ "D 43 ¹ / ₄ "H 29 ¹ / ₂ "SH



LURE	
SIDE CHAIR	
18 ³ / ₄ "W 22 ³ / ₄ "D 34"H 18 ¹ / ₄ "SH	

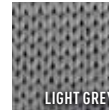
SPECIAL ORDER

THE TERRACE COLLECTION

FEATURES

- Suitable for indoor and outdoor applications
- Standard with black powder coated aluminum frame
- Woven with EPDM straps

FABRIC




METAL




**Image for reference only. Actual color may vary*

WOVEN



TERRACE	
SIDE CHAIR	
19 1/4" W 23" D 35 1/2" H 18" SH	

TERRACE	
ARMCHAIR	
19 1/4" W 23" D 35 1/2" H 18" SH	



OUTDOOR TABLETOPS X BASES





STYLE FSS COLLECTION

FEATURES

- 304 stainless steel base
- Suitable for indoor and outdoor applications
- Durable, low maintenance material is 100% recyclable
- Available bar height

The Style FSS Collection instantly adds contemporary design to any room. These stainless steel table bases offer a combination of strength and beauty which can support a wide range of table top sizes.



STYLE FSS COLLECTION	
FSS ROUND	
Available in:	18" Dia. base spread 28 ¹ / ₂ "H
	21" Dia. base spread 28 ¹ / ₂ "H
	29 ¹ / ₂ " Dia. base spread 28 ¹ / ₂ "H
	3" column, 11 ³ / ₄ " sq. top plate



STYLE FSS COLLECTION	
FSS SQUARE	
Available in:	18" x 18" base spread 28 ¹ / ₂ "H
	21" x 21" base spread 28 ¹ / ₂ "H
	3" column, 11 ³ / ₄ " sq. top plate



STYLE FSS COLLECTION	
FSS DOUBLE RECTANGLE	
27 ¹ / ₂ "W 18"D 28 ¹ / ₂ "H	
[2] 3" column, 11 ³ / ₄ " sq. top plate	



STYLE FSS COLLECTION	
FSS TRIPLE ROUND	
29 ¹ / ₂ " Dia. base spread 28 ¹ / ₂ "H	
[3] 3" column, 11 ³ / ₄ " sq. top plate	

ECO LINE ACRYLIC TABLE TOPS

FEATURES

- Appropriate for indoor and outdoor applications
- 3/4" thick full marine grade plywood substrate
- Hygienic, non-porous surface, UV stable and stain resistant
- Standard with ECO Line Edge
- 1 1/4" edge thickness



ECO LINE ACRYLIC SIZES

20" x 24"	24" x 36"	36" x 36"
20" x 27"	30" x 30"	36" x 48"
24" x 24"	30" x 42"	36" x 72"
24" x 32"	30" x 48"	42" x 24"

ECO LINE ACRYLIC ROUND SIZES

18" diameter	28" diameter	36" diameter
24" diameter	30" diameter	42" diameter

The ECO Line delivers all the beauty and durability of our molded table top line at a significantly lower price point. A combination of an ECO Line edge with light weight construction provides a sleek and

contemporary look. They are constructed with a full built-in mounting plate and are suitable for both indoor and outdoor use. The ECO Line is a perfect coalition of quality and price.

FOB NY

NOTE: The Eco line tops have shown that they can possibly warp if used in full / direct sunlight. Use in full / direct sunlight will void the warranty.

ECO LINE SERIES I



Brownstone



Butter Pecan



Cocoa



Pezza



White Quartz



Sandy Canyon



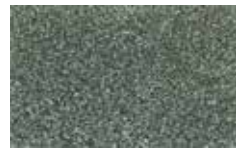
Sandy Rox



Dove Grey



Golden Oak



Sueillia Green



Wheat



Gravel



Harvest Sand



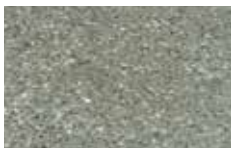
Hazel Nut



Moon Dust



Mahogany Rox



Heather Green



Kauai Purple



Lynne Star



Oahu Green

ECO LINE ACRYLIC TABLE TOPS

ECO LINE SERIES I – continued



Pistachio



Nutmeg



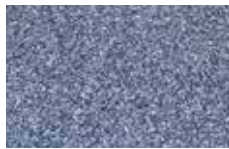
Pebble Rox



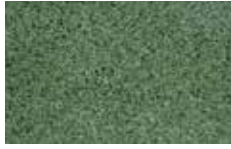
Riverstone



Saffron



Stellar Blue



Sage Brush

ECO LINE SERIES II



Rockie



Red Granite



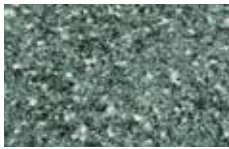
Oat



Khaki



Grey Granite



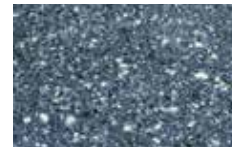
Green Granite



Gold Dust



Glacier



Blue Granite

SOLID ACRYLIC TABLE TOPS

FEATURES

- Appropriate for indoor and outdoor applications
- 3/4" thick full marine grade plywood substrate
- Hygienic, non-porous surface, UV stable and stain resistant
- Standard with waterfall profile edge



SOLID ACRYLIC SIZES

20" x 24"	24" x 36"	36" x 36"
20" x 27"	30" x 30"	36" x 48"
24" x 24"	30" x 42"	36" x 72"
24" x 32"	30" x 48"	42" x 24"

SOLID ACRYLIC ROUND SIZES

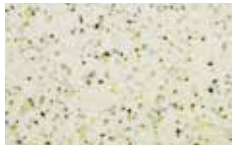
18" diameter	28" diameter	36" diameter
24" diameter	30" diameter	42" diameter

Our solid acrylic table tops offer a unique look with exceptional durability. This non-porous surface is hygienic, UV stable and stain resistant for easy cleaning. GAR's solid acrylic tops are available in

over fifty color options, have a waterfall edge and a full subsurface durable enough for outdoor applications.

FOB NY

STANDARD OPAQUE



White Gravel



Blue Matrix



Wheat



Toffee



Sueillia Green



Stellar Blue



Spice



Sea Shell



Sandy Rox



Sandy Canyon



Sand



Sage Brush



Saffron



Riverstone



Pistachio



Pezza



Pebble Rox



Oahu Green



Nutmeg



Moon Dust

SOLID ACRYLIC TABLE TOPS

STANDARD OPAQUE – continued



Mahogany Rox



Lynne Star



Kauai Purple



Heather Green



Hazel Nut



Harvest Sand



Grey Matrix



Green Matrix



Gravel



Golden Oak



Dove Grey



Black Quarry



Cocoa



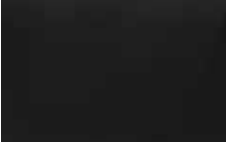
Butter Pecan



Brownstone



Brown Matrix



Black Rox



Black Matrix



White Quartz

SOLID ACRYLIC TABLE TOPS

TRANSLUCENT



Starlit



Rockie



Red Granite



Aspen White



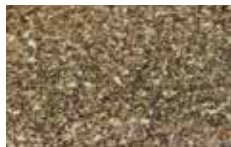
Bermuda Coral



Orange Peel



Olivine



Oat



Midnight



Melon



Lime



Khaki



Harvest Frost



Plum



Grey Granite



Green Granite



Autumn



Golden Ray



Gold Mine



Gold Dust



Glacier



Forest



Desert Sand



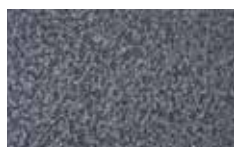
Crusher Run



Aqua Ice



Green Ice



Terrain



Tangerine



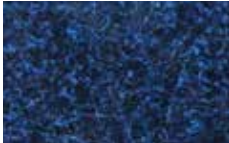
Stoney Moss



Steel Grey

SOLID ACRYLIC TABLE TOPS

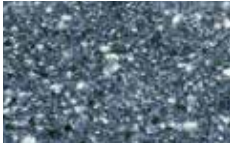
TRANSLUCENT – continued



Aegean Blue



Wine



Blue Granite



Blue Mist



Tuscan Tan

WILSONART SOLID SURFACE

NEW

FEATURES	<ul style="list-style-type: none"> • Appropriate for indoor and outdoor applications • Standard with matte finish • Made acrylic resins, fire-retardant fillers and proprietary coloring agents that are homogeneous. • 1/2" edge thickness 	AVAILABLE SIZES		
		24" x 24"	24" x 66"	30" x 60"
		24" x 30"	24" x 72"	30" x 66"
		24" x 36"	30" x 30"	30" x 72"
		24" x 42"	30" x 36"	
		24" x 48"	30" x 42"	
		24" x 60"	30" x 48"	
EDGES AVAILABLE		AVAILABLE ROUND SIZES		
<ul style="list-style-type: none"> • Standard with eased edge. Additional edges available by request 	<div style="border: 1px solid black; padding: 2px; width: fit-content; margin: 0 auto;">EASED</div>			
	24" diameter 30" diameter			

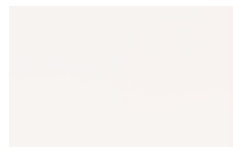
Wilsonart Solid Surface Acrylic table tops provide beauty and durability. These tops come standard with a matte finish and are available in various sizes. Standard with 0.75" MDO plywood substrate.

FOB NJ

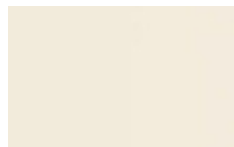
***NOTE: Additional fee will apply when using a non GAR base.**

NOTE: Crating fees apply.

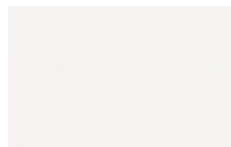
SOLID SURFACE GRADE 1



Designer White



Antique White



Frosty White



Beige Tempest



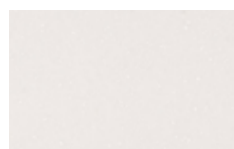
Frosty White Mirage

SOLID SURFACE GRADE 2

SOLID SURFACE GRADE 3



Arctic Melange



Milk Glass Spectra



Hot Stone

SOLID SURFACE GRADE 4



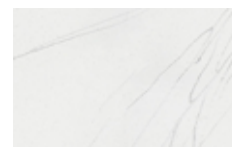
Beige Travertine



Whisper White



Cloud Mist



Ice Statuario

SHORE TABLES

NEW

FEATURES	<ul style="list-style-type: none"> • Appropriate for indoor and outdoor applications • Table top made out of Super stone • Electro galvanized steel frame. • Weather resistant, immune to water damage • Termite resistant 	TOP	FRAMES		DIMENSIONS
		 <p>ANTIQUE GREY SUPER STONE</p>	 <p>OXIDE FRAME</p>	 <p>CHARCOAL GREY FRAME</p>	<p>END TABLE 17.75"H, 30"W, 27"D</p> <p>COFFEE TABLE 13.75"H, 47.25"W, 30"D</p>

These Shore tables are the made with an electro galvanized steel frame and super stone. Super stone board is strong and flexible composed of cement, stone powder, refined ores and reinforced cellulose fiber as the main materials. It is made using an autoclaved process under high temperature and very high pressure which generates light weight, durable and smooth faced boards.





END TABLE

COFFEE TABLE

FOB NJ

SYNTHETIC TEAK TABLE TOPS

FEATURES	<ul style="list-style-type: none"> • Appropriate for indoor and outdoor applications • Frame made out of powder coated aluminum. • Synthetic teak slats (100% modified polystyrene) 	SYNTHETIC TABLE TOP SIZES	
	 <p>SYNTHETIC TEAK NATURAL</p>  <p>BLACK FRAME</p>	<p>30" x 30"</p> <p>30" x 48"</p> <p>36" x 36"</p>	

Our synthetic teak table tops are easy to maintain. Do not use extreme heat or direct sunlight. There is a 3 year structural integrity warranty on the frame only. There is no warranty on slats. Replacement slats are available for purchase.



FOB NJ

STIJL TABLE TOPS

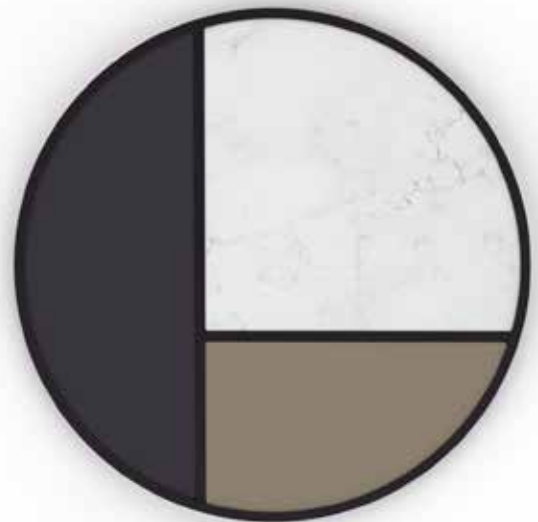
NEW

FEATURES	<ul style="list-style-type: none"> • Appropriate for indoor and outdoor applications • Frame made out of powder coated aluminum. • Table top made out of Wilsonart Solid Surface • Standard with matte finish • Hygienic, non-porous surface. • Inserts are fixed in place, they are not removable. Inserts are placed as close as possible to frame edge. 	STIJL SIZES	
		24" x 24"	30" diameter
		30" x 30"	36" diameter
		30" x 48"	42" diameter
		36" x 36"	

The Stijl table top pays homage to the Dutch art movement De Stijl. In true art form these table tops are an expression of creativity. The inner frame pattern can be customized in anyway you want. You can mix and match different colors of Wilsonart Solid Surface panels creating the color scheme of your choice. The table top frame is powder coated aluminum and use Wilsonart Solid Surface for the panels. The panels come standard with a matte finish.



FOB NJ



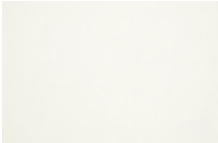




OUTDOOR TEXTILES

TEXTILES

SUNBRELLA® | CANVAS



White



Natural



Bird's Eye



Canvas



Vellum



Flax



Antique Beige



Wheat



Brass



Heather Beige



Camel



Cocoa



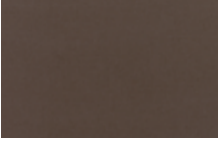
Teak



Cork



Chestnut



Walnut



Bay Brown



Terracotta



Jockey Red



Burgundy



Blush



Logo Red



Henna



Brick



Melon



Rust



Tuscan



Tangerine



Buttercup



Sunflower Yellow

TEXTILES

SUNBRELLA® I CANVAS – continued



Fern



Palm



Ginkgo



Macaw



Parrot



Forest Green



Teal



Spa



Glacier



Aruba



Mineral Blue



Sky Blue



Capri



Pacific Blue



Regatta



Air Blue



Sapphire Blue



Navy



True Blue



Iris



Hot Pink



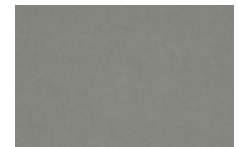
Dusk



Granite



Taupe



Charcoal



Coal



Black



Raven Black

- Contents: 100% solution dyed acrylic
- Width: 54 inches
- Flammability: Meets California Technical Bulletin #117 Sec E (CS-191-53)
- Classification: 1 Normal flammability

- Solution dyed to give excellent fade and weather resistance
- Made from 100% dyed acrylic fiber which is thermoplastic. Do not subject to excessive heat. When Sunbrella® fabric is stored, it should be cleaned, allowed to dry and stored in

- a dry, well ventilated area.
- Please note that all colors pictured in product images, finishes and materials may vary from their actual color

TEXTILES

SUNBRELLA® I DUPIONE



Pearl



Sand



Dove



Latte



Walnut



Stone



Oak



Bamboo



Nectarine



Cornsilk



Paradise



Peridot



Aloe



Laurel



Celeste



Deep Sea



Galaxy



Crimson



Henna



Papaya

TEXTILES

SUNBRELLA® | LINEN



Antique Beige



Canvas



Champagne



Chili



Natural



Pampas



Sesame



Silver



Stone



Straw



Taupe

- Contents: 100% solution dyed acrylic
- Width: 54 inches
- Flammability: Meets California Technical Bulletin #117 Sec E (CS-191-53)
- Classification: 1 Normal flammability

- Solution dyed to give excellent fade and weather resistance
- Made from 100% dyed acrylic fiber which is thermoplastic. Do not subject to excessive heat. When Sunbrella® fabric is stored, it should be cleaned, allowed to dry and stored in

- a dry, well ventilated area.
- Please note that all colors pictured in product images, finishes and materials may vary from their actual color

CARE AND MAINTENANCE



TEAK

All of our teak is naturally grown and will have varying color and grain in each piece. Proper care and cleaning will enhance and maintain the natural beauty of the wood. Left by itself, the teak will develop a silver-gray patina. For general cleaning when removing dirt, moss and surface stains, use a sponge or a soft cloth and clean with a solution of, 2 ounces of dishwashing soap with, 8 cups of lukewarm water. Make sure to rinse completely with clean water and allow time to air dry before use. For further care and protection of your teak furniture use Golden Care protection products. Please note that retreatment will be required as all protective finishes are not permanent.

METAL CARE

In general our metal furniture can be cleaned with clean water or non-detergent soap.

Abrasive sponges, detergent, abrasive powders should not be used to clean our metal furniture.

For dirt, crayons, black scuff marks or any similar marks that are more heavily ingrained, a window-cleaning product that contains alcohol or specific product such as star brite Multi-Purpose Cleaner should be used.



CARE AND MAINTENANCE

ROPE WEAVE

We recommend to simply wash it with mild soap and water solution, rinse and allow to dry thoroughly.



STAINLESS STEEL

Scratches in stainless can be buffed out with Scotch-Brite™ pads or very fine grit sand paper (steel wool is not recommended due to the mild steel fibers contaminating the stainless surface, therefore leaving rust colored stains). It is also recommended that the surface of the grain is followed in the same direction when buffing out scratches. Stainless, although very resistant to corrosive environments, does require periodic care and maintenance. Cleaning is necessary on all grades of stainless to prevent corrosive particles from gathering in the grain of the stainless surface. This results in a rust colored staining. Weekly cleaning with a good stainless cleaner will keep the surface free from corrosive particles. In environments where there is salt, chlorine or air pollution present, a weekly cleaning with water and liquid detergent followed by drying will keep the stainless surface free from contamination. If staining has occurred, the surface can be cleaned with a nonabrasive kitchen cream cleanser and a light coat of a good quality protective spray such as Fluid Film® can be applied.



CARE AND MAINTENANCE



SOLID SURFACE ACRYLIC

GENERAL CLEANING

All table tops and fabricated sheet goods can be cleaned by using soap and water. Apply soap and water with a sponge or damp cloth, then towel dry to eliminate water spots.

PROTECTING THE SURFACE

All table tops and fabricated sheet goods are resistant to most household cleaners. Table tops and sheet goods should NOT be exposed to chemicals such as paint remover, metal cleaner, oven cleaner, acetone, nail polish remover, abrasive cleaner, and acid drain cleaner. Protect the finish with acrylic polish such as Countertop Magic® or furniture polish.

All surfaces should NOT be exposed to direct heat. The use of insulated mats underneath hot objects will avoid damage to your surface.



MEGANITE

GENERAL CLEANING

Routine cleaning with soap and water and a sponge, or window cleaner and paper towels will remove most dirt and stains. Abrasive cleaners (such as Comet®, Soft Scrub®, Bon Ami®, etc.) **should not be used on solid surface except for removing tough stains, minor scratches and burns.** If a stain develops on the surface, wipe it away with soap and water or glass cleaner. Rub in a circular motion, then rinse and towel dry. To maintain the finish, rub the entire surface occasionally with the Scotch-Brite® pad.

PROTECTING THE SURFACE

Meganite tops should NOT be exposed to chemicals such as paint remover, metal cleaner, oven cleaner, acetone, nail polish remover, abrasive cleaner, and acid drain cleaner. Protect the finish with acrylic polish such as Countertop Magic® or furniture polish.

All surfaces should NOT be exposed to direct heat. The use of insulated mats underneath hot objects will avoid damage to your surface.

CARE AND MAINTENANCE

SUNBRELLA®

CONTENTS: 100% solution dyed acrylic

WEIGHT: Approximately 8.0 ounces per sq. yard

WIDTH: 54 inches

FLAMMABILITY: Meets California Technical Bulletin #117 Sec. E (CS-191-53)

CLASSIFICATION: 1 Normal flammability

ADDITIONAL INFORMATION: Solution dyed to give excellent fade and weather resistance. Made from 100% dyed acrylic fiber which is thermoplastic. DO NOT SUBJECT TO EXCESSIVE HEAT. When Sunbrella® fabric is stored, it should be cleaned, allowed to dry and stored in a dry, well ventilated area. Sunbrella® Care and Cleaning Performance moisture-resistant fabrics are extremely easy to keep clean and beautiful. Proper maintenance, vacuuming regularly and rotating seat cushions frequently keeps your furniture looking good and promotes long fabric life.



GENERAL CLEANING METHODS

Brush off dirt before it becomes imbedded in the fabric, wipe up spills as soon as they occur, and spot-clean by sponging cushions with mild soap and warm water.

HAND-WASHING

Soak fabric in a solution of ¼-cup mild soap per gallon of lukewarm water. Use a sponge or a soft bristle brush as necessary. Rinse thoroughly with clean water. Hang and allow to air-dry. These fabrics usually air-dry very quickly.

MACHINE-WASHING

Remove cushions from cushion covers. Machine-wash fabric in cold water with mild laundry soap, or use 7 parts bleach to 3 parts cold water, hang and allow to air-dry.

SPOT-CLEANING UPHOLSTERED PIECES

Apply a light mist of mild soap and water using a spray bottle. Remove the stain with a sponge or a very soft bristle brush. Rinse with clean water and air-dry, blotting or wet-vacuuming excess water. Repeat until all soap residue is removed.

OUR STORY

For 65 years GAR Products has been on a journey - one that started from humble surroundings in Newark, New Jersey and marched steadily south towards our current vision in Lakewood, New Jersey. Founded by Ellie and "GAR", then taken over by Ellen and Jay, the fairy tale of GAR Products continues.

At GAR Products, we believe we are the stewards of the land - dedicated to being environmentally and socially responsible to not only our community, but to all of our clients nationwide. To us, sustainability goes beyond ethical practices; it's who we are. It is our mission to be good to the earth and socially aware.

From our team to yours, all aboard our train. Can't wait for you to experience where our company was, is and will be.

Welcome Aboard!

“Where the spirit does not work with the hand, there is no art”

- Leonardo Da Vinci





GAR[®]
PRODUCTS

170 Lehigh Avenue, Lakewood, NJ 08701 | 800.424.2477 | www.garproducts.com