

FRETTE

1860



Hospitality Collection



# CONTENTS

Bed Linens	3
Bath Robes	18
Bath Linens	26
Beach & Pool Towels	37
Table Linens	39
Accessories, Pajamas & Utility	51
Fabric & Care Guide	59





**BED LINENS**

---

ESTIMATED SHIP TIME

*7–10 days from order confirmation date or deposit;  
subject to warehouse availability.*

*– MADE IN INDIA –*

PILLOWCASES  
& SHAMS

SIZES ARE INNER SIZES  
AFTER WASHING.

*Excludes hems or borders.*

BED SHEET

SIZES ARE BEFORE  
WASHING.

*Includes hems or borders.*

DUVET COVER

SIZES ARE INNER SIZES  
AFTER WASHING.

*Excludes hems or borders.*

---

# PERCALE Collection

**FABRIC REFERENCE:** PLAIN WEAVE, PLAIN DESIGN, 200 THREAD COUNT  
**QUALITY:** 100% COTTON PERCALE, MERCERIZED Ne 40/40, 110X90inch **WEIGHT:**  
 118 gsm, **COLOR:** WHITE

Made in India



## SHAM

4 Border of 2" Each, Plain Hem at the Opening 2", Inside Flap 8"

Item	Item Number	Dimensions	Case Pack
Standard Four Border	PULF00291051064	20"x25"	20
Queen Four Border	PULF00293051071	20"x28"	20
King Four Border	PULF00215051089	20"x35"	20

## PILLOWCASE

Bag Model, Plain Hem at the Opening 2", Inside Flap 8"

Item	Item Number	Dimensions	Case Pack
Standard Pillowcase	PULF00292051064	20"x25"	20
Queen Pillowcase	PULF00294051071	20"x28"	20
King Pillowcase	PULF00216051089	20"x35"	20

## FLAT SHEET

Plain Hem 2" at Top and 0.8" Bottom

Item	Item Number	Dimensions	Case Pack
Twin Flat Sheet	PULL00297180290	71"x114"	5
Queen Flat Sheet	PULL00288254305	100"x120"	5
King Flat Sheet	PULL00290300310	118"x122"	5

## FITTED SHEET

15" Pockets and Elastic on Four Corners

Item	Item Number	Dimensions	Case Pack
Twin Fitted Sheet	PULL00432099190	39"x75"x15"	5
Queen Fitted Sheet	PULL00233152203	60"x80"x15"	5
King Fitted Sheet	PULL00298193203	76"x80"x15"	5

## DUVET COVER

Bag Model, Plain Hem at Opening 2", Inside Flap 15.8"

Item	Item Number	Dimensions	Case Pack
Twin Duvet Cover	PULC00296173218	68"x86"	3
Queen Duvet Cover	PULC00295229229	90"x90"	3
King Duvet Cover	PULC00289264229	104"x90"	3



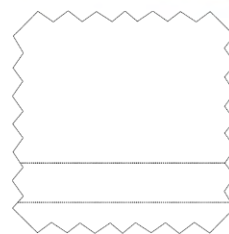
# SMERALDO Collection

**FABRIC REFERENCE:** SATEEN, PLAIN DESIGN, 300 THREAD COUNT

**QUALITY:** 100% COTTON, MERCERIZED Ne 60/60, 190X95inch

**WEIGHT:** 115 gsm, **COLOR:** WHITE

Made in India



## SHAM

4 Border of 2" Each, Plain Hem at the Opening 2", Inside Flap 8"

Item	Item Number	Dimensions	Case Pack
Standard Four Border	PULF00351051064	20"x25"	20
Queen Four Border	PULF00354051071	20"x28"	20
King Four Border	PULF00224051089	20"x35"	20

## PILLOWCASE

Bag Model, Plain Hem at the Opening 2", Inside Flap 8"

Item	Item Number	Dimensions	Case Pack
Standard Pillowcase	PULF00352051064	20"x25"	20
Queen Pillowcase	PULF00356051071	20"x28"	20
King Pillowcase	PULF00227051089	20"x35"	20

## FLAT SHEET

Plain Hem 3.9" at Top and 0.8" Bottom

Item	Item Number	Dimensions	Case Pack
Twin Flat Sheet	PULL00378180290	71"x114"	5
Queen Flat Sheet	PULL00338254305	100"x120"	5
King Flat Sheet	PULL00346300310	118"x122"	5

## FITTED SHEET

15" Pockets and Elastic on Four Corners

Item	Item Number	Dimensions	Case Pack
Twin Fitted Sheet	PULL00434099190	39"x75"x15"	5
Queen Fitted Sheet	PULL00238152203	60"x80"x15"	5
King Fitted Sheet	PULL00382193203	76"x80"x15"	5

## DUVET COVER

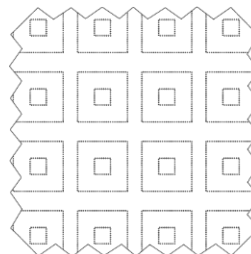
Bag Model, Plain Hem at Opening 2", Inside Flap 15.8"

Item	Item Number	Dimensions	Case Pack
Twin Duvet Cover	PULC00376173218	68"x86"	3
Queen Duvet Cover	PULC00384229229	90"x90"	3
King Duvet Cover	PULC00341264229	104"x90"	3

# CLAUDIA Collection

**FABRIC REFERENCE:** SATEEN, PLAIN DESIGN, 300 THREAD COUNT  
**QUALITY:** 100% COTTON, MERCERIZED Ne 60/60, 190X95inch **WEIGHT:**  
 115 gsm, **COLOR:** WHITE

Made in India



## SHAM

4 Border of 2" Each, Plain Hem at the Opening 2", Inside Flap 8"

Item	Item Number	Dimensions	Case Pack
Standard Four Border	PULF00119051064	20"x25"	20
Queen Four Border	PULF00118051071	20"x28"	20
King Four Border	PULF00116051089	20"x35"	20

## PILLOWCASE

Bag Model, Plain Hem at the Opening 2", Inside Flap 8"

Item	Item Number	Dimensions	Case Pack
Queen Pillowcase	PULF00117051071	20"x28"	20
King Pillowcase	PULF00115051089	20"x35"	20

## FLAT SHEET

Plain Hem 3.9" at Top and 0.8" Bottom

Item	Item Number	Dimensions	Case Pack
Queen Flat Sheet	PULL00122254305	100"x120"	5
King Flat Sheet	PULL00120300310	118"x122"	5

## DUVET COVER

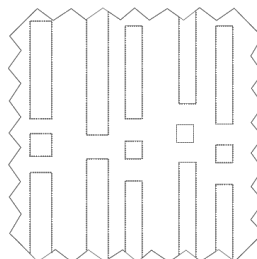
Bag Model, Plain Hem at Opening 2", Inside Flap 15.8"

Item	Item Number	Dimensions	Case Pack
Queen Duvet Cover	PULC00114229229	90"x90"	3
King Duvet Cover	PULC00121264229	104"x90"	3

# FRANCESCA Collection

**FABRIC REFERENCE:** SATEEN, LARGE AND SMALL VERTICAL STRIPE DESIGN, 300 THREAD COUNT    **QUALITY:** 100% COTTON, MERCERIZED Ne 60/60, 190X95inch    **WEIGHT:** 115 gsm, **COLOR:** WHITE

Made in India



## SHAM

4 Border of 2" Each, Plain Hem at the Opening 2", Inside Flap 8"

Item	Item Number	Dimensions	Case Pack
Standard Four Border	PULF00169051064	20"x25"	20
Queen Four Border	PULF00170051071	20"x28"	20
King Four Border	PULF00172051089	20"x35"	20

## PILLOWCASE

Bag Model, Plain Hem at the Opening 2", Inside Flap 8"

Item	Item Number	Dimensions	Case Pack
Queen Pillowcase	PULF00171051071	20"x28"	20
King Pillowcase	PULF00173051089	20"x35"	20

## FLAT SHEET

Plain Hem 3.9" at Top and 0.8" Bottom

Item	Item Number	Dimensions	Case Pack
Queen Flat Sheet	PULL00166254305	100"x120"	5
King Flat Sheet	PULL00168300310	118"x122"	5

## DUVET COVER

Bag Model, Plain Hem at Opening 2", Inside Flap 15.8"

Item	Item Number	Dimensions	Case Pack
Twin Duvet Cover	PULC00174173218	68"x86"	3
Queen Duvet Cover	PULC00175229229	90"x90"	3
King Duvet Cover	PULC00167264229	104"x90"	3



# RIGATO ARA

## Collection

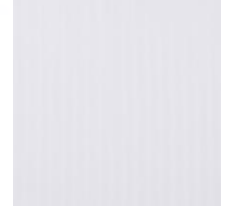
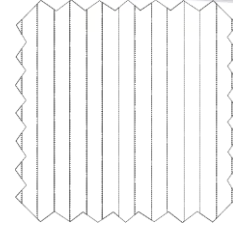
**FABRIC REFERENCE:** SATEEN, SMALL VERTICAL STRIPE DESIGN,  
300 THREAD COUNT

100% COTTON, MERCERIZED, Ne 60/60, 190X95inch

**WEIGHT:** 115 gsm, **COLOR:** WHITE

**QUALITY:**

Made in India



### SHAM

4 Border of 2" Each, Plain Hem at the Opening 2", Inside Flap 8"

Item	Item Number	Dimensions	Case Pack
Standard Four Border	PULF00306051064	20"x25"	20
Queen Four Border	PULF00308051071	20"x28"	20
King Four Border	PULF00217051089	20"x35"	20

### PILLOWCASE

Bag Model, Plain Hem at the Opening 2", Inside Flap 8"

Item	Item Number	Dimensions	Case Pack
Standard Pillowcase	PULF00307051064	20"x25"	20
Queen Pillowcase	PULF00309051071	20"x28"	20
King Pillowcase	PULF00218051089	20"x35"	20

### FLAT SHEET

Plain Hem 3.9" at Top and 0.8" Bottom

Item	Item Number	Dimensions	Case Pack
Twin Flat Sheet	PULL00318180290	71"x114"	5
Queen Flat Sheet	PULL10063254305	100"x120"	5
King Flat Sheet	PFLC1311A264228	118"x122"	5

### FITTED SHEET

15" Pockets and Elastic on Four Corners

Item	Item Number	Dimensions	Case Pack
Twin Bed Sheet	PULL00433099190	39"x75"x15"	5
Queen Fitted Sheet	PULL00234152203	60"x80"x15"	5
King Fitted Sheet	PULL00319193203	76"x80"x15"	5

### DUVET COVER

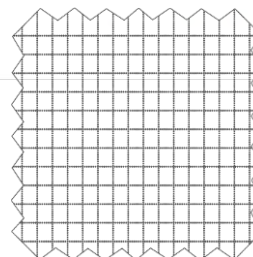
Bag Model, Plain Hem at Opening 2", Inside Flap 15.8"

Item	Item Number	Dimensions	Case Pack
Twin Duvet Cover	PULC00317173218	68"x86"	3
Queen Duvet Cover	PULC00320229229	90"x90"	3
King Duvet Cover	PFLC1311A264228	104"x90"	3

# SABRINA Collection

**FABRIC REFERENCE:** SATEEN, CHECK DESIGN, 300 THREAD COUNT, **QUALITY**  
100% COTTON, MERCERIZED Ne 60/60, 190X95inch **WEIGHT:** 115 gsn  
**COLOR:** WHITE

Made in India



## SHAM

4 Border of 2" Each, Plain Hem at the Opening 2", Inside Flap 8"

Item	Item Number	Dimensions	Case Pack
Queen Four Border	PULF00370051071	20"x28"	20
King Four Border	PULF00222051089	20"x35"	20

## PILLOWCASE

Bag Model, Plain Hem at the Opening 2", Inside Flap 8"

Item	Item Number	Dimensions	Case Pack
Queen Pillowcase	PULF00371051071	20"x28"	20
King Pillowcase	PULF00223051089	20"x35"	20

## FLAT SHEET

Plain Hem 3.9" at Top and 0.8" Bottom

Item	Item Number	Dimensions	Case Pack
Queen Flat Sheet	PULL00367254305	100"x120"	5
King Flat Sheet	PULL00369300310	118"x122"	5

## FITTED SHEET

15" Pockets and Elastic on Four Corners

Item	Item Number	Dimensions	Case Pack
Queen Bed Fitted Sheet	PULL00236152203	60"x80"X15"	5
King Bed Fitted Sheet	PULL00335193203	76"x80"X15"	5

## DUVET COVER

Bag Model, Plain Hem at Opening 2", Inside Flap 15.8"

Item	Item Number	Dimensions	Case Pack
Queen Duvet Cover	PULC00336229229	90"x90"	3
King Duvet Cover	PULC00368264229	104"x90"	3

# SOPHIA Collection

**FABRIC REFERENCE:** SATEEN, LARGE VERTICAL STRIPE DESIGN, 300 THREAD COUNT  
**QUALITY:** 100% COTTON, MERCERIZED, Ne 60/60, 190x95inch  
**WEIGHT:** 115 gsm,  
**COLOR:** WHITE

Made in India



## SHAM

4 Border of 2" Each, Plain Hem at the Opening 2", Inside Flap 8"

Item	Item Number	Dimensions	Case Pack
Standard Four Border	PULF00394051064	20"x25"	20
Queen Four Border	PULF00396051071	20"x28"	20
King Four Border	PULF00229051089	20"x35"	20

## PILLOWCASE

Bag Model, Plain Hem at the Opening 2", Inside Flap 8"

Item	Item Number	Dimensions	Case Pack
Standard Pillowcase	PULF00395051064	20"x25"	20
Queen Pillowcase	PULF00397051071	20"x28"	20
King Pillowcase	PULF00230051089	20"x35"	20

## FLAT SHEET

Plain Hem 3.9" at Top and 0.8" Bottom

Item	Item Number	Dimensions	Case Pack
Twin Flat Sheet	PULL00399180290	71"x114"	5
Queen Flat Sheet	PULL00390254305	100"x120"	5
King Flat Sheet	PULL00393300310	118"x122"	5

## FITTED SHEET

15" Pockets and Elastic on Four Corners

Item	Item Number	Dimensions	Case Pack
Twin Fitted Sheet	PULL00435099190	39"x75"x15"	5
Queen Fitted Sheet	PULL00239152203	60"x80"x15"	5
King Fitted Sheet	PULL00400193203	76"x80"x15"	5

## DUVET COVER

Bag Model, Plain Hem at Opening 2", Inside Flap 15.8"

Item	Item Number	Dimensions	Case Pack
Twin Duvet Cover	PULC00398173218	68"x86"	3
Queen Duvet Cover	PULC00401229229	90"x90"	3
King Duvet Cover	PULC00391264229	104"x90"	3



# ANNA Collection

**FABRIC REFERENCE:** SATEEN, PLAIN DESIGN, 400 THREAD COUNT  
**QUALITY:** 100% COTTON, MERCERIZED, Ne 60s/60/2, 190x95\*2/inch  
**WEIGHT:** 135 gsm, **COLOR:** WHITE

Made in India



## SHAM

4 Border of 2" Each, Plain Hem at the Opening 2", Inside Flap 8"

Item	Item Number	Dimensions	Case Pack
Standard Four Border	PULF00064051064	20"x25"	20
Queen Four Border	PULF00066051071	20"x28"	20
King Four Border	PULF00209051089	20"x35"	20

## PILLOWCASE

Bag Model, Plain Hem at the Opening 2", Inside Flap 8"

Item	Item Number	Dimensions	Case Pack
Queen Pillowcase	PULF00067051071	20"x28"	20
King Pillowcase	PULF00212051089	20"x35"	20

## FLAT SHEET

Plain Hem 3.9" at Top and 0.8" Bottom

Item	Item Number	Dimensions	Case Pack
Twin Flat Sheet	PULL00069180290	71"x114"	5
Queen Flat Sheet	PULL00057254305	100"x120"	5
King Flat Sheet	PULL00062300310	118"x122"	5

## FITTED SHEET

15" Pockets and Elastic on Four Corners

Item	Item Number	Dimensions	Case Pack
Queen Fitted Sheet	PULL00232152203	60"x80"x15"	5
King Fitted Sheet	PULL00070193203	76"x80"x15"	5

## DUVET COVER

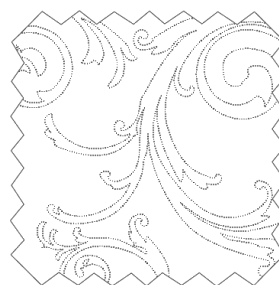
Bag Model, Plain Hem at Opening 2", Inside Flap 15.8"

Item	Item Number	Dimensions	Case Pack
Twin Duvet Cover	PULC00068173218	68"x86"	3
Queen Duvet Cover	PULC00072229229	90"x90"	3
King Duvet Cover	PULC00059264229	104"x90"	3

# ELENA Collection

**FABRIC REFERENCE:** FIANDRA, JACQUARD DESIGN, 400 THREAD  
COUNT **QUALIT**  
100% COTTON, MERCERIZED, Ne 60s/60/2, 190x95\*2/inch **WEIGHT:** 1:  
gsm, **COLOR:** WHITE

Made in India



## SHAM

4 Border of 2" Each, Plain Hem at the Opening 2", Inside Flap 8"

Item	Item Number	Dimensions	Case Pack
Queen Four Border	PULF00139051071	20"x28"	20
King Four Border	PULF00141051089	20"x35"	20

## PILLOWCASE

Bag Model, Plain Hem at the Opening 2", Inside Flap 8"

Item	Item Number	Dimensions	Case Pack
Queen Pillowcase	PULF00140051071	20"x28"	20
King Pillowcase	PULF00142051089	20"x35"	20

## FLAT SHEET

Plain Hem 3.9" at Top and 0.8" Bottom

Item	Item Number	Dimensions	Case Pack
Queen Flat Sheet	PULL00136254305	100"x120"	5
King Flat Sheet	PULL00138300310	118"x122"	5

## DUVET COVER

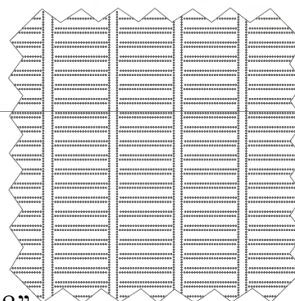
Bag Model, Plain Hem at Opening 2", Inside Flap 15.8"

Item	Item Number	Dimensions	Case Pack
Queen Duvet Cover	PULC00143229229	90"x90"	3
King Duvet Cover	PULC00137264229	104"x90"	3

# AGATA Collection

**FABRIC REFERENCE:** SATEEN, AGATA STRIPE DESIGN, 300  
THREAD COUNT  
**QUALITY:** 100% COTTON, MERCERIZED, Ne 60/60, 190x95inch  
**WEIGHT:** 115 gsm, **COLOR:** WHITE

Made in India



## SHAM

4 Border of 2" Each, Plain Hem at the Opening 2", Inside Flap 8"

Item	Item Number	Dimensions	Case Pack
Queen Four Border	PULF00020051071	20"x28"	20
King Four Border	PULF00012051089	20"x35"	20

## PILLOWCASE

Bag Model, Plain Hem at the Opening 2", Inside Flap 8"

Item	Item Number	Dimensions	Case Pack
Standard Pillowcase	PULF00019051064	20"x25"	20
Queen Pillowcase	PULF00021051071	20"x28"	20
King Pillowcase	PULF00023051089	20"x35"	20

## FLAT SHEET

Plain Hem 3.9" at Top and 0.8" Bottom

Item	Item Number	Dimensions	Case Pack
Queen Flat Sheet	PULL00015254305	100"x120"	5
King Flat Sheet	PULL00017300310	118"x122"	5

## DUVET COVER

Bag Model, Plain Hem at Opening 2", Inside Flap 15.8"

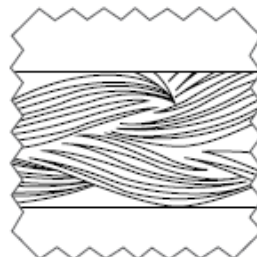
Item	Item Number	Dimensions	Case Pack
Queen Duvet Cover	PULC00027229229	90"x90"	3
King Duvet Cover	PULC00016264229	104"x90"	3



# GIADA Collection

**FABRIC REFERENCE:** SATEEN, GIADA JACQUARD WAVE DESIGN, 300  
**THREAD COUNT**  
**QUALITY:**  
 100% COTTON, MERCERIZED Ne 60/60, 196X91inch **WEIGHT:** 115 gsm,  
**COLOR:** WHITE

Made in India



## SHAM

4 Border of 2" Each, Plain Hem at the Opening 2", Inside Flap 8"

Item	Item Number	Dimensions	Case Pack
Queen Four Border	PULF00192051071	20"x28"	20
King Four Border	PULF00195051089	20"x35"	20

## PILLOWCASE

Bag Model, Plain Hem at the Opening 2", Inside Flap 8"

Item	Item Number	Dimensions	Case Pack
Queen Pillowcase	PULF00193051071	20"x28"	20
King Pillowcase	PULF00196051089	20"x35"	20

## FLAT SHEET

Plain Hem 3.9" at Top and 0.8" Bottom

Item	Item Number	Dimensions	Case Pack
Queen Flat Sheet	PULL00188254305	100"x120"	5
King Flat Sheet	PULL00190300310	118"x122"	5

## DUVET COVER

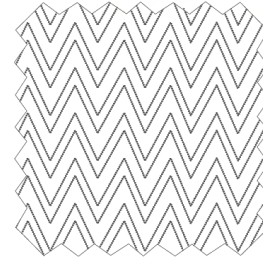
Bag Model, Plain Hem at Opening 2", Inside Flap 15.8"

Item	Item Number	Dimensions	Case Pack
Queen Duvet Cover	PULC00200229229	90"x90"	3
King Duvet Cover	PULC00189264229	104"x90"	3

# AMBRA Collection

**FABRIC REFERENCE:** PIQUE, AMBRA DESIGN  
**QUALITY:** 100% COTTON, DECORATIVE COVERLET AND SHAMS  
**WEIGHT:** 500 gsm, **COLOR:** WHITE

Made in Portugal



## COVERLET

Item	Item Number	Dimensions	Case Pack
Queen Coverlet	PULB00036244254	94x100"	1
King Coverlet	PULB10284277254	109"x100"	1

## SQUARE SHAM Open Split Back

Item	Item Number	Dimensions	Case Pack
Euro Sham	PULF00035066066	26"x26"	1

# SILK Collection

**FABRIC REFERENCE:** SILK, PLAIN DESIGN

**QUALITY:** 100% SILK **WEIGHT:** 69 gsm **COLOR:** WHITE

Made in China



## SHAM

100% Silk, Four Border White Sham, 5 cm Borders, 15 cm Inner Flap

---

Item	Item Number	Dimensions	Case Pack
Queen Four Border	PULF00337053076	21"x30"	20
King Four Border	PULF10003053094	21"x37"	20

## PILLOWCASE

100% Silk, White Bag Pillowcase, 15 cm Inner Flap, 2 cm Hem at the Opening

---

Item	Item Number	Dimensions	Case Pack
Queen Pillowcase	PULF10002053076	21"x30"	20
King Pillowcase	PULF10004053094	21"x37"	20



A close-up photograph of a white bathrobe hanging on a gold-colored hanger. The robe is made of a textured, possibly terry cloth, fabric. The hanger has several thin, gold-colored rods. The background is a dark, textured surface. The text "BATH ROBES" is overlaid in the center of the image.

**BATH ROBES**

---

ESTIMATED SHIP TIME

*7-10 days from order confirmation date or deposit;  
subject to warehouse availability.*

*- MADE IN TURKEY -*

EMBROIDERY

AVAILABLE UPON  
REQUEST

*Lead time 15-20 days from  
receipt of logo approval.*

SET-UP FEE

FIRST TIME: \$150.00  
*Cost per logo is \$6.50/piece  
unless notified otherwise.*

*Sizes Are After Washing*

LOGOS

EMBROIDERED ON  
LEFT BREAST UNLESS  
SPECIFIED OTHERWISE.

# SHAWL COLLAR



## AGATA JACQUARD VELOUR

100% Cotton, White, 400 gsm; Construction: Two Pockets, 52"Length, Raglan Sleeves, Double Loop for Belt

Item	Item Number	Size	Case Pack
Adult Velour Robe	QGCUA12300100	XL	1



## SUITE JACQUARD STRIPE

100% Cotton, White, 420 gsm; Construction: Two Pockets, 52"Length, Raglan Sleeves, Double Loop for Belt

Item	Item Number	Size	Case Pack
Adult Robe	QUSUA00100304	XL	1
Suite Belt	QUCUC01600026	ONE SIZE	1



## VELOUR

100% Cotton, White, 400 gsm; Construction: Two Pockets, 52"Length, Raglan Sleeves, Double Loop for Belt

Item	Item Number	Size	Case Pack
Adult Velour Robe	QUSUA00100272	L	1
Adult Velour Robe	QUSUA00100272	XL	1
Children's 2-5 Years	QGCCA0231611A	2-5	1
Children's 6-10 Years	QGCCA0231612A	6-10	1
Velour Belt	QGPUC01600007	ONE SIZE	1



# SHAWL COLLAR



## VELOUR ROBE WITH BLACK PIPING

100% Cotton, White, 400 gsm; Construction: Two Pockets, 52"Length, Raglan Sleeves, Double Loop for Belt

---

Item	Item Number	Size	Case Pack
Adult Velour Robe with Black Piping	QUCUA07000034	XL	1
Velour Belt	QGPUC01600007	ONE SIZE	1



## VELOUR ROBE WITH WHITE PIPING

100% Cotton, White, 400 gsm; Construction: Two Pockets, 52"Length, Raglan Sleeves, Double Loop for Belt

---

Item	Item Number	Size	Case Pack
Adult Velour Robe with White Piping	QUCUA07000035	XL	1
Velour Belt	QGPUC01600007	ONE SIZE	1



## VELOUR ROBE WITH NAVY PIPING

100% Cotton, White, 400 gsm; Construction: Two Pockets, 52"Length, Raglan Sleeves, Double Loop for Belt

---

Item	Item Number	Size	Case Pack
Adult Velour Robe with Navy Piping	QUSUA07000227	XL	1
Velour Belt	QGPUC01600007	ONE SIZE	1



# SHAWL COLLAR



## MICROFIBER TERRY

100% Micropolyester on the Outside (150 gsm), Cotton Terry on the Inside (270 gsm); Construction: Two Pockets, 52"Length, Raglan Sleeves, Double Loop for Belt

---

Item	Item Number	Size	Case Pack
Microfiber Terry Robe	QUSUA00100291	XL	1
Microfiber Terry Belt	QUPUC01600181	ONE SIZE	1



## WAFFLE TERRY

100% Cotton, Waffle on the Outside (235 gsm), Terry on the Inside (270 gsm); Construction: Two Pockets, 52"Length, Raglan Sleeves, Double Loop for Belt

---

Item	Item Number	Size	Case Pack
Waffle Terry Robe	QUCUA00100004	XL	1
Waffle Terry Belt	QGPUC04700008	ONE SIZE	1



## TERRY ROBE

100% Cotton, White, 430 gsm; Construction: Two Pockets, 52"Length, Raglan Sleeves, Double Loop for Belt

---

Item	Item Number	Size	Case Pack
Terry Robe	QGCUA00100002	XL	1
Terry Belt	QGPUC01600002	ONE SIZE	1

# HOODED



## JERSEY HOODED ROBE

Hooded Robe, Grey, Polyester on Outside (290 gsm), Cotton on Inside (300gsm)

---

Item	Item Number	Size	Case Pack
Jersey Robe	QUCUA00300013	L	1
Jersey Robe	QUCUA00300013	XL	1
Jersey Belt	QUSUC01600234	ONE SIZE	1



## FLUFFY ROBE

Hooded Robe, White, 300 gsm, Microfiber Terry

---

Item	Item Number	Size	Case Pack
Fluffy Hooded Robe	QFPCA1312015A	XL	1



## WAFFLE HOODED

100% Cotton, White, Waffle on the Outside (235 gsm), Velour Contrast at Hood, Pocket and Sleeve Borders (400 gsm)

---

Item	Item Number	Size	Case Pack
Waffle Hooded with Velour Contrast	QUCUA15000032	L	1
Waffle Hooded with Velour Contrast	QUCUA15000032	XL	1
Waffle Belt	QGPUC04700008	ONE SIZE	1

# KIMONO



## TERRY KIMONO

100% Cotton, White, 430 gsm; Construction: Two Pockets, 50" Length, ¾ Kimono Sleeves, Double Loop for Belt

---

Item	Item Number	Size	Case Pack
Terry Kimono Robe	QGCUA00200002	L	1
Terry Belt	QGPUC01600002	ONE SIZE	1



## VELOUR KIMONO

100% Cotton, White, 350 gsm; Construction: Two Pockets, 50" Length, ¾ Kimono Sleeves, Double Loop for Belt

---

Item	Item Number	Size	Case Pack
Velour Kimono Robe	QUCUA00200031	L	1
Velour Belt	QGPUC01600007	ONE SIZE	1



## WAFFLE KIMONO

100% Cotton, Waffle on Outside, White, 235 gsm; Construction: Two Pockets, 50" Length, ¾ Kimono Sleeves, Double Loop for Belt

---

Item	Item Number	Size	Case Pack
Waffle Kimono Robe	QUSUA00200277	XL	1
Waffle Belt	QGPUC04700008	ONE SIZE	1

# KIMONO



## PIQUE KIMONO

100% Cotton, White, Caesar Pique, 210 gsm; Construction: Two Pockets, 52" Length, ¾ Kimono Sleeves, Double Loop for Belt

Item	Item Number	Size	Case Pack
Pique Kimono Robe	QUSUA00200298	XL	1
Children's Pique Kimono Robe	QUSCA12900236	Ages 2-5	1
Children's Pique Kimono Robe	QUSCA12900237	Ages 6-10	1
Pique Belt	QUCUC01600022	ONE SIZE	1



## TURKISH LIGHTWEIGHT KIMONO

100% Cotton, White with Blue Stripes on Ends of Robe and Sleeves, Indantren Dyed, 210 gsm; Construction: Two Pockets, 50" Length, ¾ Kimono Sleeves, Double Loop for Belt

Item	Item Number	Size	Case Pack
Turkish Lightweight Kimono	QUCUA00200028	L	1



A photograph of a bathroom. In the foreground, a white ceramic sink is set into a light-colored stone countertop. To the left of the sink is a chrome faucet with a white ceramic handle. To the right of the sink is a stack of five white towels, with two rolled up on top. In the background, a large mirror reflects the scene. Above the mirror, a chandelier with brass and crystal elements hangs from the ceiling. The wall behind the mirror has decorative etched patterns. The text "BATH LINENS" is overlaid in the center of the image.

# BATH LINENS

---

ESTIMATED SHIP TIME

*7-10 days from order confirmation date or deposit;  
subject to warehouse availability.*

*- MADE IN TURKEY -*

EMBROIDERY

AVAILABLE UPON REQUEST

*Lead time 15-20 days from  
receipt of logo approval.*

SET-UP FEE

FIRST TIME: \$150.00

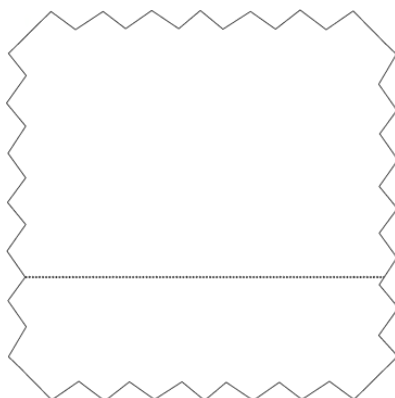
*Cost per logo is \$6.50/piece  
unless notified otherwise.*

*Sizes Are After Washing*

---

# NICO

**Quality:** 100% Cotton, Single Twisted Terry,  
**Pique Border Color:** White  
 All Towels - 600 gsm, Bath Mat - 860gsm

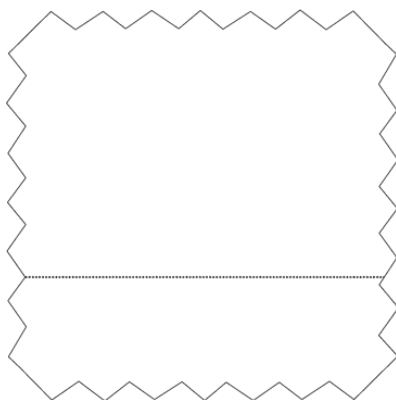


Item	Item Number	Dimensions	Lbs./Each	Case Pack
Washcloth	PUBL00281033033	13"x13"	0.15	12
Hand Towel	PUBB00282040076	16"x30"	0.40	12
Hand Towel	PUBA00283048081	19"x32"	0.52	6
Bath Towel	PUBP00285068137	27"x54"	1.23	6
Bath Sheet	PUBT00286076152	30"x60"	1.53	6
Bath Sheet	PUBT00287089168	35"x66"	1.97	3
Bath Mat	PUBS00280048089	19"x35"	0.81	6



# LUSSO

**Quality:** 100% Cotton, Double Twisted Terry,  
Pique Border **Color:** White  
All Towels - 600 gsm, Bath Mat - 860gsm



---

Item	Item Number	Dimensions	Lbs./Each	Case Pack
Washcloth	PUBL00281033033	13"x13"	0.15	12
Hand Towel	PUBA00283048081	19"x32"	0.52	6
Bath Towel	PUBP00285068137	27"x54"	1.23	6
Bath Sheet	PUBT00287089168	35"x66"	1.97	3
Bath Mat	PUBS00280048089	19"x35"	0.81	6

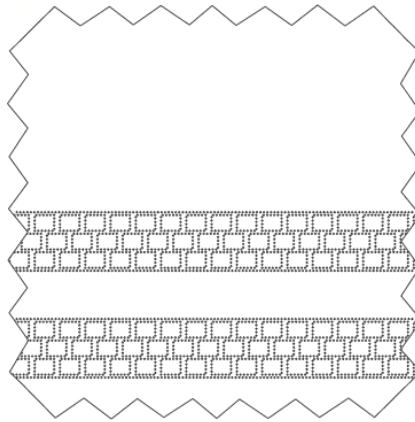


# CHECKERBOARD

**Quality:** 100% Cotton, Double Twisted Terry, Check Border **Color:**

White

All Towels - 700 gsm, Bath Mat - 860 gsm



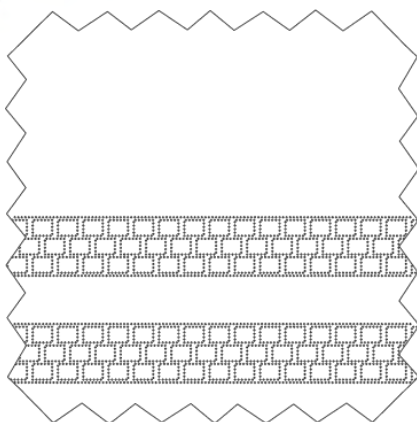
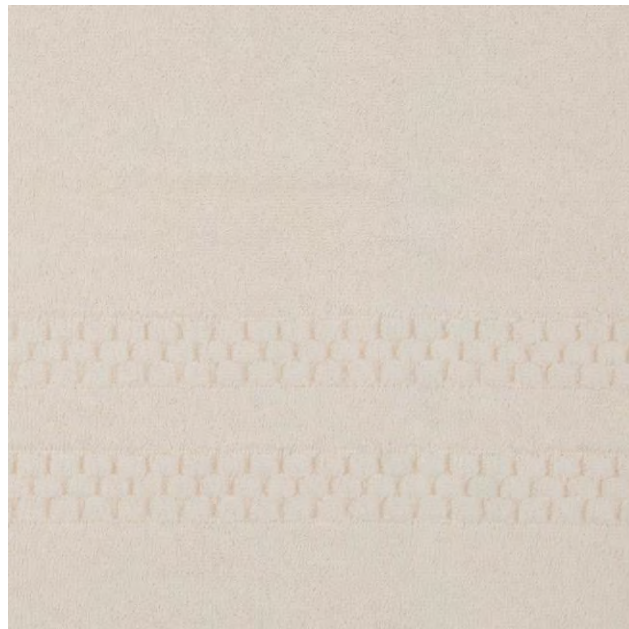
Item	Item Number	Dimensions	Lbs./Each	Case Pack
Washcloth	PUBL00103033033	13"x13"	0.17	12
Hand Towel	PUBB00104040076	16"x30"	0.47	12
Hand Towel	PUBA00105048081	19"x32"	0.60	6
Bath Towel	PUBP00107068137	27"x54"	1.44	6
Bath Sheet	PUBT00108089168	35"x66"	2.30	3
Bath Mat	PUBS00106048089	19"x35"	0.81	6

# CHECKERBOARD

**Quality:** 100% Cotton, Double Twisted Terry, Check Border

**Color:** Ivory, Vat Color

All Towels-700 gsm, Bath Mat-860 gsm



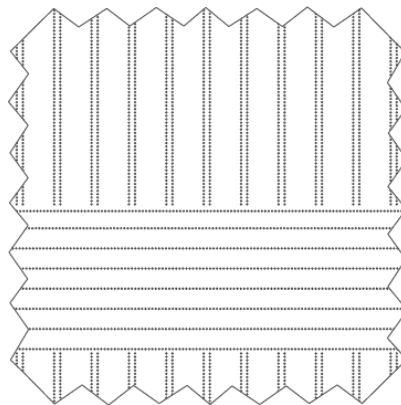
Item	Item Number	Dimensions	Lbs./Each	Case Pack
Washcloth	PUBL00097033033	13"x13"	0.17	12
Hand Towel	PUBB00098040076	16"x30"	0.47	12
Hand Towel	PUBA00099048081	19"x32"	0.60	6
Bath Towel	PUBP00101068137	27"x54"	1.44	6
Bath Sheet	PUBT00102089168	35"x66"	2.30	3
Bath Mat	PUBS00100048089	19"x35"	0.81	6

# SUITE

**Quality:** 100% Cotton, Jacquard Stripe,  
Double Twisted Terry - All Over Design

**Color:** White

All Towels - 650 gsm, Bath Mat - 860 gsm



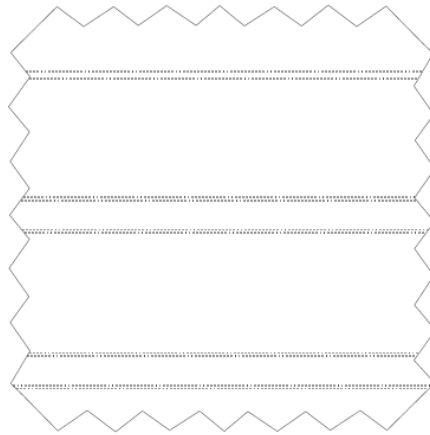
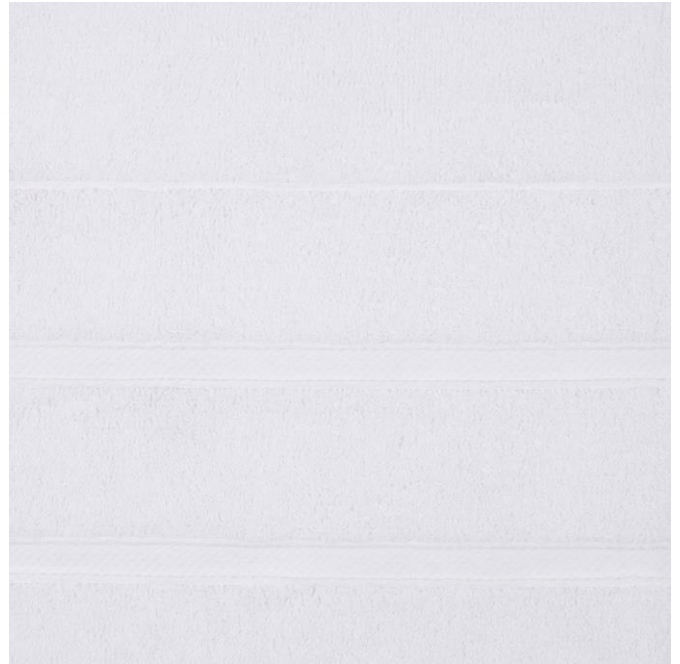
Item	Item Number	Dimensions	Lbs./Each	Case Pack
Washcloth	PUBL00404033033	13"x13"	0.16	12
Hand Towel	PUBA00405048081	19"x32"	0.44	6
Bath Towel	PUBP00408068137	27"x54"	1.33	6
Bath Sheet	PUBT00409076152	30"x60"	1.67	6
Bath Sheet	PUBT00410089168	35"x66"	2.13	3
Bath Mat	PUBS00407048089	19"x35"	0.81	6

# LANES

**Quality:** 100% Cotton, Double Twisted Terry, Dobby  
Border, Lanes Design at Both Ends

**Color:** White

All Towels - 650 gsm, Bath Mat - 860 gsm



Item	Item Number	Dimensions	Lbs./Each	Case Pack
Washcloth	PUBL00261033033	13"x13"	0.16	12
Hand Towel	PUBB00263040076	16"x30"	0.44	12
Hand Towel	PUBA00265048081	19"x32"	0.58	6
Bath Towel	PUBP00267068137	27"x54"	1.33	6
Bath Sheet	PUBT00269089168	35"x66"	2.13	3
Bath Mat	PUBS00266048089	19"x35"	0.81	6

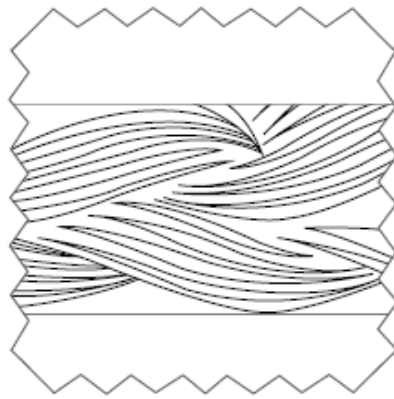


# GIADA TERRY

**Quality:** 100% Cotton, Giada Jacquard Design on Border

**Color:** White

All Towels – 600 gsm, Bath Mat – 850 gsm



---

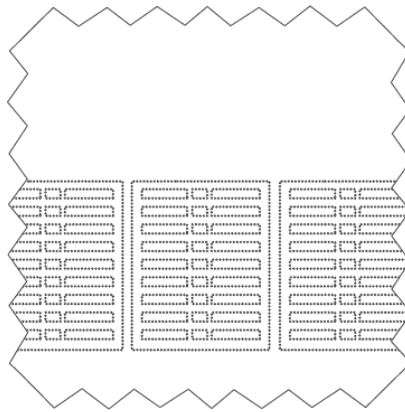
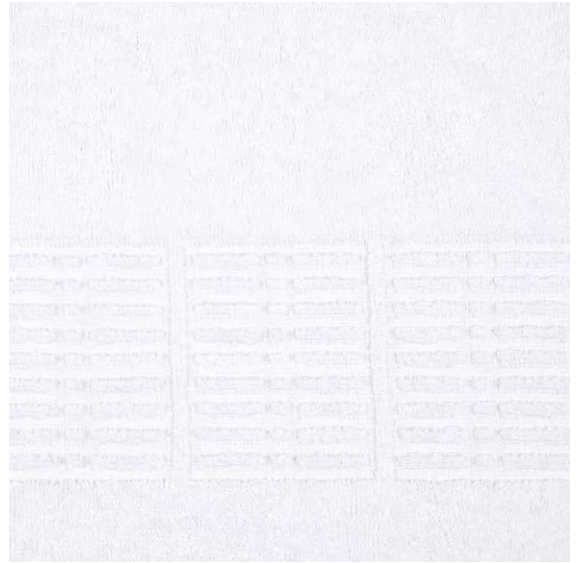
Item	Item Number	Dimensions	Lbs./Each	Case Pack
Washcloth	PUBL00191033033	13"x13"	0.15	12
Hand Towel	PUBB00194040076	16"x30"	0.42	12
Bath Towel	PUBP00198068137	27"x54"	1.32	6
Bath Sheet	PUBT00199089168	35"x66"	1.93	3
Bath Mat	PUBS00197048089	19"x35"	0.80	6

# AGATA

**Quality:** 100% Cotton, Double Twisted Terry,  
Jacquard Design on Border

**Color:** White

All Towels - 650 gsm, Bath Mat - 860 gsm



Item	Item Number	Dimensions	Lbs./Each	Case Pack
Washcloth	PUBL00018033033	13"x13"	0.15	12
Hand Towel	PUBA00022048081	19"x32"	0.52	6
Bath Towel	PUBP00025068137	27"x54"	1.23	6
Bath Sheet	PUBT00026089168	35"x66"	1.97	3
Bath Mat	PUBS00024048089	19"x35"	0.81	6



# GUEST TOWEL

Lightweight Washcloth

**Quality:** 100% Cotton, Single Yarn, Dobby Terry, 400 gsm

**Color:** White, Black

Item	Item Number	Dimensions	Lbs./Each	Case Pack
White Washcloth	PUBL00273030030	12"x12"	0.09	12
Black Washcloth	PUBL00271030030	12"x12"	0.09	12

# MAKEUP TOWEL

Lightweight Black Washcloth

**Quality:** 100% Cotton, Single Yarn, Dobby Terry, 400 gsm

**Color:** Black with 'Makeup' Embroidered at Bottom Center in Silver Thread



Item	Item Number	Dimensions	Lbs./Each	Case Pack
Makeup Towel	PUBL00272030030	12"x12"	0.10	12



# GIULIA BATH RUG

**Quality:** 100% Cotton Long Pile (16mm); Stitching on 4 Sides, Non-Slip Backing with Envelope Corners

**Color:** White

Item	Item Number	Dimensions	Lbs./Each	Case Pack
Bath Rug	PUBU10438051079	20"x31"	1.50	1
Bath Rug	PUBU10439058099	23"x39"	1.75	1



A stack of five folded white towels is the central focus. The top two towels feature a blue stripe, while the bottom three have a gold stripe. They are neatly folded and stacked on a dark surface. In the background, the clear blue water of a swimming pool is visible, with light reflecting off the surface. The overall scene is bright and clean, suggesting a poolside or beach setting.

# BEACH & POOL TOWELS



# BEACH & POOL

Made in Turkey

## BEACH/POOL TOWEL

**Quality:** 100% Cotton, Single Twisted Terry, Vat Color, Applied White Single Twisted Terry Border, Mitred Corners, 430 gsm



Item	Item Number	Size	Lbs./Each	Case Pack
Beige/White Pool Towel	PUBT10115100180	39"X78" "	2.69	1
Navy/White Pool Towel	PUBT10116100180	39"X78" "	2.69	1

## STRIPED POOL TOWEL

**Quality:** 100% Cotton, Pique Border, Double Twisted Terry, 420 gsm



Item	Item Number	Size	Lbs./Each	Case Pack
Pool Towel with Beige Stripes	PUBP00402100170	39"X67"	1.54	3
Pool Towel with Blue Stripes	PUBP00403100170	39"X67"	1.54	3



## LOUNGE COVER

**Quality:** 100% Cotton Terry, 4 Square Hems, 400 gsm, With Hood to Go Over Top of Chair; **Color:** White

Item	Item Number	Size	Lbs./Each	Case Pack
White Lounge Cover with Hood	PUCH10058089246	35"X97"	2.37	1

*Estimated Ship Time: 7-10 days from order confirmation date or deposit; subject to warehouse availability.*

Sizes are BEFORE washing, excluding hems or borders

FOB NEW JERSEY

A photograph of a restaurant table set. The table is covered with a white tablecloth and a grey runner. Three wine glasses and three water glasses are set on the table. A blue velvet chair with a wooden frame is in the foreground. The background wall is dark grey and features several framed artworks, including a large portrait of a woman's face and a smaller one with the word 'GRADE' on it. The floor is dark grey.

# TABLE LINENS



---

ESTIMATED SHIP TIME

*7-10 days from order confirmation date or deposit;  
subject to warehouse availability.*

*- MADE IN TURKEY -*

*Sizes Are After Washing*

---

# SATIN BAND

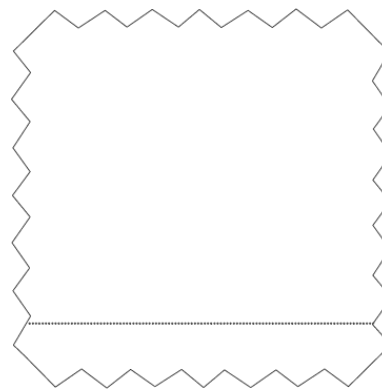
**Quality:** 100% Cotton, 22 Picks

**Fabric Reference:** Bordo Cornice, Damask, Double Twisted, Mercerized

**Color:** White

**Weight:** 205 gsm

Two Hems and Two Selvedges, Plain Hem 1 cm, In-Woven Frette Logo



---

Item	Item Number	Dimensions	Case Pack
Napkin	PUTO00152055055	22"x22"	50
Tablecloth	PUTC00203120120	47"x47"	10
Tablecloth	PUTT00154140140	55"x55"	10
Tablecloth	PUTT00155163163	64"x64"	10
Tablecloth	PUTT00157180180	71"x71"	5
Tablecloth	PUTT00158210210	83"x83"	5
Tablecloth	PUTT00160240240	94"x94"	5



# SATIN BAND

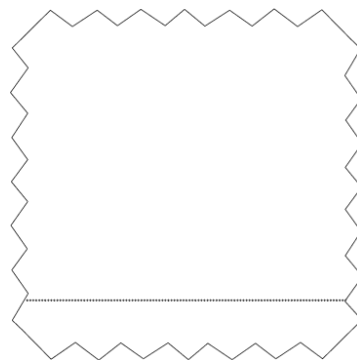
**Quality:** 100% Cotton, 22 Picks

**Fabric Reference:** Bordo Cornice, Damask, Double Twisted, Mercerized

**Color:** Ivory Half Tone

**Weight:** 205 gsm

Two Hems and Two Selvedges, Plain Hem 1 cm, In-Woven Frette Logo



---

Item	Item Number	Dimensions	Case Pack
Napkin	PUTO00146055055	22"x22"	50
Tablecloth	PUTC00204120120	47"x47"	10
Tablecloth	PUTT00147140140	55"x55"	10
Tablecloth	PUTT0014816316	64"x64"	10
Tablecloth	PUTT00149180180	71"x71"	5
Tablecloth	PUTT00150210210	83"x83"	5
Tablecloth	PUTT00151240240	94"x94"	5

# GRANITE

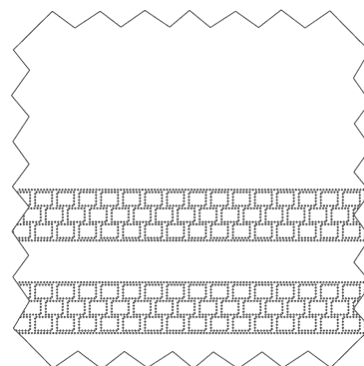
**Quality:** 100% Cotton, 22 Picks

**Fabric Reference:** Granite Bordo Cornice, Damask, Double Twisted, Mercerized

**Color:** White

**Weight:** 205 gsm

Two Hems and Two Selvedges, Plain Hem 1 cm, In-Woven Frette Logo



---

Item	Item Number	Dimensions	Case Pack
Napkin	PUTO00315055055	22"x22"	50
Tablecloth	PUTC00211120120	47"x47"	10
Tablecloth	PUTT00242140140	55"x55"	10
Tablecloth	PUTT00245163163	64"x64"	10
Tablecloth	PUTT00246180180	71"x71"	5
Tablecloth	PUTT00248210210	83"x83"	5
Tablecloth	PUTT00249240240	94"x94"	5

# GRANITE

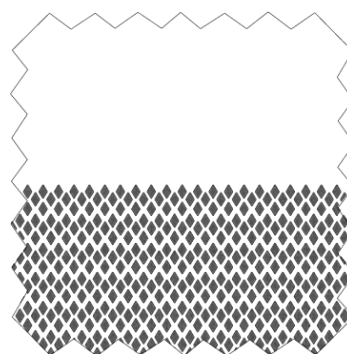
**Quality:** 100% Cotton, 22 Picks

**Fabric Reference:** Granite Bordo Cornice, Damask, Double Twisted, Mercerized

**Color:** Ivory Half Tone

**Weight:** 205 gsm

Two Hems and Two Selvedges, Plain Hem 1 cm, In-Woven Frette Logo



---

Item	Item Number	Dimensions	Case Pack
Napkin	PUTO00202055055	22"x22"	50
Tablecloth	PUTC00210120120	47"x47"	10
Tablecloth	PUTT00310140140	55"x55"	10
Tablecloth	PUTT00311163163	64"x64"	10
Tablecloth	PUTT00312180180	71"x71"	5
Tablecloth	PUTT00313210210	83"x83"	5
Tablecloth	PUTT00314240240	94"x94"	5

# VIGNA

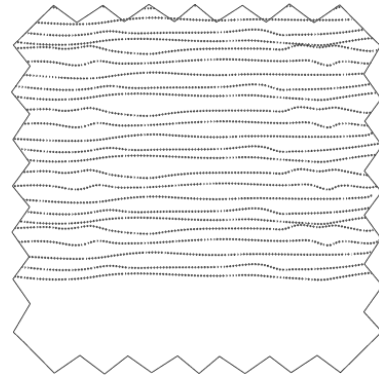
**Quality:** 100% Cotton, 22 Picks

**Fabric Reference:** Twigs Design, Damask, Double Twisted, Mercerized

**Color:** White

**Weight:** 205 gsm

Two Hems and Two Selvedges, Plain Hem 1 cm, In-Woven Frette Logo



---

Item	Item Number	Dimensions	Case Pack
Napkin	PUTO00420055055	22"x22"	50
Tablecloth	PUTT00421140140	55"x55"	10
Tablecloth	PUTT00422163163	64"x64"	10
Tablecloth	PUTT00423180180	71"x71"	5
Tablecloth	PUTT00424210210	83"x83"	5
Tablecloth	PUTT00425240240	94"x94"	5



# AJOUR

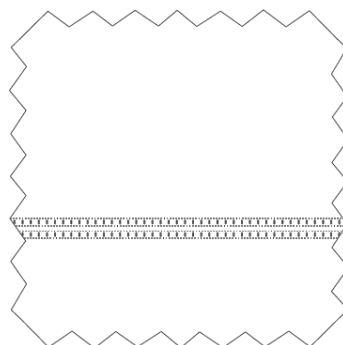
Quality: 100% Cotton, 22 Picks

**Fabric Reference:** Raso Ajour Doppio Design, Damask, Double Twisted, Mercerized

**Color:** Giunco Half Tone

**Weight:** 205 gsm

Two Hems and Two Selvedges, Plain Hem 1 cm, In-Woven Frette Logo



---

Item	Item Number	Dimensions	Case Pack
Napkin	PUTO00028055055	22"x22"	50
Tablecloth	PUTT00029140140	55"x55"	10
Tablecloth	PUTT00030163163	64"x64"	10
Tablecloth	PUTT00031180180	71"x71"	5
Tablecloth	PUTT00032210210	83"x83"	5
Tablecloth	PUTT00033240240	94"x94"	5

# NAPKINS

## TABLE LINENS



### VIGNA NAPKIN

**Details:** 100% Cotton, 22 Picks, 205 gsm; **Color:** Yellow/Wheat Two-Tone

**Fabric Reference:** Reverse Twigs Center, Damask, Double Twisted, Mercerized

---

Item	Item Number	Dimensions	Case Pack
Napkin	PUTO00419055055	22"X22"	50



### RETA CHECK NAPKIN

**Details:** 100% Cotton, 22 Picks, 205 gsm; **Color:** White

**Fabric Reference:** Checks Center, Damask, Double Twisted, Mercerized

---

Item	Item Number	Dimensions	Case Pack
Napkin	PUTO00418055055	22"X22"	50



### DAMI NAPKIN

**Details:** 100% Cotton, 22 Picks, 205 gsm; **Color:** Grapefruit Half-Tone

**Fabric Reference:** Small Check, Damask, Double Twisted, Mercerized

---

Item	Item Number	Dimensions	Case Pack
Napkin	PUTO00113055055	22"X22"	50

# NAPKINS

## TABLE LINENS



### DAMI NAPKIN

**Details:** 100% Cotton, 22 Picks, 205 gsm; **Color:** Lavender/Tan Two-Tone

**Fabric Reference:** Small Check, Damask, Double Twisted, Mercerized

---

Item	Item Number	Dimensions	Case Pack
Napkin	PUTO00124055055	22"X22"	50



### VALERIA NAPKIN

**Details:** 100% Cotton, 23 Picks, Warp; **Color:** Grey/Ivory Two-Tone

---

Item	Item Number	Dimensions	Case Pack
Napkin	PUTO00426055055	22"X22"	50



### BLACK SATIN BAND NAPKIN

**Details:** 100% Cotton, 22 Picks, 205 gsm; **Color:** Black Full-Tone

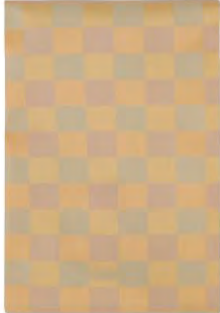
**Fabric Reference:** Satin Band Bordo Cornice, Damask, Double Twisted, Mercerized

---

Item	Item Number	Dimensions	Case Pack
Napkin	PUTO00144055055	22"X22"	50

# NAPKINS

## TABLE LINENS



### THREE COLOR CHECK NAPKIN

**Details:** 100% Cotton, 22 Picks, 205 gsm; **Color:** Grapefruit/Celadon/Wheat

**Fabric Reference:** Dami, Large Check, Damask, Double Twisted, Mercerized

---

Item	Item Number	Dimensions	Case Pack
Napkin	PUTO00007055055	22"X22"	50



### GRANITE BLUE NAPKIN

**Details:** 100% Cotton, 22 picks, 205 gsm; **Color:** Blue Half-Tone

**Fabric Reference:** Granite, Double Twisted, Mercerized

---

Item	Item Number	Dimensions	Case Pack
Napkin	PUTO00201055055	22"X22"	50



### GRANITE GREY NAPKIN

**Details:** 100% Cotton, 22 picks, 205 gsm; **Color:** Grey Half-Tone

**Fabric Reference:** Granite, Double Twisted, Mercerized

---

Item	Item Number	Dimensions	Case Pack
Napkin	PUTO10127055055	22"X22"	50



# NAPKINS

## TABLE LINENS



### SONIA LINEN NAPKIN

**Details:** 100% Plain Linen, 1" Hemstitch on 4 Sides, Mitred Corners; **Color:** White  
Made in India

---

Item	Item Number	Dimensions	Case Pack
Napkin	PUTO10147051051	20"x20"	50



### COCKTAIL NAPKIN

**Details:** 100% Cotton, 22 Picks, 205 gsm; **Color:** White;  
**Fabric Reference:** Armatura Roso, Solid White, Damask, Double Twisted,  
Mercerized Hemmed on 4 Sides, Plain Hem 2cm, In-Woven Frette Logo

---

Item	Item Number	Dimensions	Case Pack
Napkin	PUTV00084024024	9.5"x9.5"	50

A photograph of a hotel room. In the foreground, a breakfast tray is set on a bed with white linens. The tray contains a bowl of fresh fruit (strawberries, raspberries, blueberries, kiwi, and mango), a plate with two slices of bread, and a glass of green juice. A fork and knife are neatly placed on a white napkin. In the background, a bed with a grey headboard is made with white pillows and a white duvet. To the left of the bed, a modern bedside table holds a white coffee cup on a saucer and some magazines. A small framed picture hangs on the wall above the table. The overall atmosphere is clean, bright, and inviting.

**ACCESSORIES,  
PAJAMAS & UTILITY**

---

ESTIMATED SHIP TIME

*7–10 days from order confirmation date or deposit;  
subject to warehouse availability.*

---

# ACCESSORIES



## HUCKABUCK TOWEL

**Details:** 100% Cotton, 22 Picks, Single Twisted, 245 gsm; **Color:** White

---

Item	Item Number	Dimensions	Case Pack
Towel	PFBB01786042060	16"X24"	50



## GYM TOWEL

**Details:** 100% Cotton, 500 gsm; **Color:** White with Grey Border on Short Sides

---

Item	Item Number	Dimensions	Case Pack
Gym Towel	PUA210666030088	12"x35"	6



## GEMELLI THROW

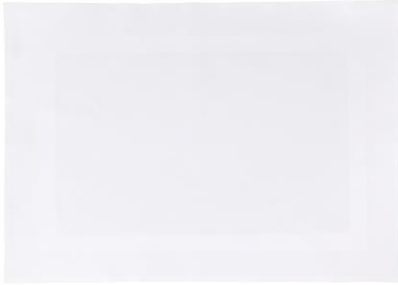
**Details:** 90% Merino Wool, 10% Cashmere with Fringe on Ends; **Color:** Two-Tone Grey

---

Item	Item Number	Dimensions	Case Pack
Gemelli Two-Tone	PULI10290140180	55"x71"	1



# ACCESSORIES



## BED SIDE MAT

**Details:** 100% Cotton, Combed, Double Twisted, Mercerized, 270 gsm; **Color:** White

Item	Item Number	Dimensions	Case Pack
Side Mat	PULE11861055070	22"X28"	25



## WAFFLE SLIPPERS

**Details:** 100% Cotton, Waffle Design, Rubber Sole, Closed Toe; **Color:** White

Item	Item Number	Size	Case Pack
Women's	PGVH00006000039	8-10	50
Men's	PGVH00008000043	10-12	50



## VELOUR SLIPPERS

**Details:** 100% Polyester, Micro Suede Sole with Non-Slip Dots, Closed Toe, Packaged in TNT Bag; **Color:** White

Item	Item Number	Size	Case Pack
Women's	PUVH10510000039	8-10	50
Men's	PUVH10509000043	10-12	50
Children's 2-5	PUVH10511000017	C2-5	100
Children's 6-10	PUVH10512000022	C6-10	100

# UTILITY

## DOWN PILLOWS

**FABRIC REFERENCE:** 100% Cotton, Down Proof, Double-Needle Stitching with Cotton Piping

### BIANCA 25/75

75% White Premium Duck Feather / 25% Premium White Down

---

Item	Item Number	Dimensions	Case Pack
Queen	PULG11563051076	20"X30"	1
King	PULG11562051091	20"x36"	1



### BIANCA 50/50

50% White Premium Duck Feather / 50% Premium White Down

---

Item	Item Number	Dimensions	Case Pack
Queen	PULG11561051076	20"X30"	1
King	PULG11560051091	20"x36"	1

## DOWN ALTERNATIVE PILLOWS

**FABRIC REFERENCE:** 100% Cotton, Down Proof, Double-Needle Stitching with Cotton Piping

### GIADA

Microfiber Down Alternative, 230 TC

---

Item	Item Number	Dimensions	Case Pack
Queen	PULG11579051076	20"X30"	1
King	PULG11581051091	20"x36"	1



## PILLOW PROTECTORS

**Details:** 230 TC, Bag Model with Invisible Zipper Closure, 100% Cotton, Percale, Mercerized; **Color:** Bianco, White

---

Item	Item Number	Dimensions	Case Pack
Standard	PULS00300051066	20"X26"	20
Queen	PULS00301051076	20"x30"	20
King	PULS10062051091	20"X36"	20



# UTILITY



## MATTRESS COVER

15" Fitted Skirt with Universal Elastic, 300 TC Tencel-Fill Polyester, White

Item	Item Number	Dimensions	Case Pack
Twin	PULD11586100190	39"X75"X15"	1
Full	PULD11585140190	54"X75"X15"	1
Queen	PULD11584152203	60"X80"X15"	1
King	PULD11583198203	78"X80"X15"	1

## DOWN INSERTS

## BIANCA INSERTS

**FABRIC REFERENCE:** 100% Cotton, 230 TC, Down Proof, Hypoallergenic, Double Stitching with Cotton Piping

**CONSTRUCTION:** Baffle Box with Invisible Baffle Seam, Baffle Height 1-1/4"

**FILL:** 600 Fill Power Premium White Duck Down, Hypoallergenic

### SUMMER WEIGHT

Item	Item Number	Dimensions	Case Pack
Twin	PULP11570173224	68"X88"	1
Queen	PULP11567234234	92"X92"	1
King	PULP11559269244	106"X96"	1



### FALL WEIGHT

Item	Item Number	Dimensions	Case Pack
Twin	PULP11569173224	68"X88"	1
Queen	PULP11566234234	92"X92"	1
King	PULP11558269244	106"X96"	1

# UTILITY

## DOWN ALTERNATIVE INSERTS

### GIADA INSERTS



**FABRIC REFERENCE:** 100% Cotton, 230 TC, Down Proof, Hypoallergenic, Double Stitching with Cotton Piping

**CONSTRUCTION:** Baffled Boxstitch with Invisible Seam

**FILL:** Hypoallergenic

#### SUMMER WEIGHT

---

Item	Item Number	Dimensions	Case Pack
Twin	PULP11578173224	68"X88"	1
Queen	PULP11574234234	92"X92"	1
King	PULP11577269244	106"X96"	1



# FABRIC GUIDE

## COTTON

Woven from the finest raw materials available, Frette has produced linens of unparalleled quality that have come to embody luxury, comfort and creativity across the globe; the quality of our cotton is no exception. We use cotton with long, smooth fibers, resulting in a more uniform, resistant and smoother thread when twisted. Therefore, our bedding, bath and accessories are durable, easy to care for and soft to the touch. Percale is a lightweight cotton with a smooth, crisp feel and matte look that is perfect for summer and warmer weather climates. Sateen is a soft, light and lustrous fabric with a silky smooth feel, luminous sheen and inviting touch. Poplin is a strong cotton fabric in a plain weave that is soft and comfortable with a remarkable sheen and brightness. The structure of poplin gives the fabric the property of not wrinkling quickly and of washing and ironing easily.

## LINEN

Linen is a natural fiber extracted from the flax plant with a fresh feel, a silky shine and high resistance. Due to its structure, linen can absorb water equivalent to up to 20% of its weight without the body feeling any humidity. This makes linen an ideal fabric for close contact with the skin, especially in warmer climates.

## SILK

Silk is soft, strong and absorbent. This natural fiber helps maintain body temperature, making it suitable for insulation in winter and cooling during the summer months. Ensuring the highest quality, Frette's silk is exclusively spun and woven on Italian soil.

## CASHMERE

Cashmere is a precious fiber with extraordinary traits. Obtained exclusively from the fleece of the Hyrcus goat, native to the mountainous regions of Asia, cashmere has an extremely high capacity for thermal insulation in both cold and hot climates. Highly prized because of the limited quantity produced each year, Frette deals exclusively with the finest raw materials, spinning and weaving it into the very best cashmere fabric available today.

## WOOL

Wool has high tensile strength and elasticity, offering insulation properties and the ability to retain shape and absorb moisture. Merino Wool comes from the Mediterranean coastal area, the ideal climate for producing the world's highest quality wool and the only one capable of meeting the standards for Frette's exacting weaves.



# CARE GUIDE

We thank you for choosing Frette linens, synonymous with quality since 1860.

Maintaining Frette linens is quite simple. Following a few simple care instructions will preserve the original quality and outstanding characteristics of our products over the course of time.

## **PRELIMINARY TIPS & NOTES**

New products, especially those made of pure cotton, pure linen or a linen-cotton blend, should always be washed, at least once, separately from other items before being put into use for the first time. Use more water (in higher ratio) and load your washing device with fewer items per load.

This initial washing enhances the product characteristics and sets the linen in its best condition for optimal use. After washing, fibers swell and compact, regaining their original shape. A shrinkage in the two directions of the linen item (i.e. warp and weft, respectively the length and the width of the cloth) is normal.

The contents that follow are guidelines for the maintenance of each product line. Further adjustments to the wash cycle, which may be due to different types of water and machinery, may be necessary.

Frette products are manufactured in line with the latest recommendations with regards to environmental sustainability. Therefore:

- Do not use unnecessary high temperatures during the washing, drying and ironing process.
- Do not exceed the detergent and chemical dosage.

## **BED LINENS**

### **FIRST WASHING**

Rinse the product before washing. Use more water (higher ratio water to linens) and load your washing device with fewer items.



# CARE GUIDE

## **FOLLOWING WASHINGS**

Prewash at 30°C (85°F).

Wash with detergents at 60°C (140°F). For very soiled and white items, the washing temperature may be increased.

If necessary, bleach using oxygen-based products. If chlorine bleach is used, always use the minimum quantity of chlorine, otherwise the appearance and lifecycle of the product will be adversely affected.

Rinse thoroughly, lowering the temperature of the water, to remove chlorine and any chemical agents.

Carry out normal neutralization at the end of the washing cycle to neutralize all bleach residues and to reduce the alkalinity.

## **USE OF DETERGENTS & BLEACHES**

To obtain the best results in washing, the dosage of detergents and bleach should be adjusted to the specific characteristics of the water and correctly tuned by your supplier of detergents in collaboration with the manufacturer of your laundry equipment.

Color Linens: Never use detergents containing optical brightening agents (OBA), as they will damage the color look and change the shade / cast of the product.

## **DRYING & IRONING**

Pressing and tumbling are steps in which care must be used.

Set the pressure of the press to the lowest level possible or gentle spin, and make sure that drying be at a low temperature and gentle process to obtain a residual humidity of 52 to 55% (i.e. 1.00 kg of dry linen must weight 1.52 to 1.55 kg when extracted damp from the tumbler).



# CARE GUIDE

Tumble drying too long and at too high a temperature damages bed linens by causing creases, abrasions, ‘elephant skin’ wrinkles and shrinkages of up to 20%.

Iron linen on a mangle or calander having a roller temperature not exceeding 180°C (360°F).

If a mangle (roll ironer) is used, feed the linen in length normally, but not always. This is the direction of the warp of the fabric. By the same token, flat items (i.e. bed sheets and tablecloths) will be introduced by the hem (not the selvedge, if any). Items with a pocket (i.e. pillowcases and duvet covers), by the side which is opposite the opening.

## WAY OF TREATMENT

Never overload the washing machine.

Color Linens: Always keep separate from white.

Neither exaggerate with dosages, nor exceed the dosage concentration.

Enzymes or sodium peroxide-based bleach should be preferred to remove heavy soil.

If and when bleaching is require, pour the bleach solution in the washer mandatorily when the water is at full level and the linens are properly wet.

Never leave bed linens (wet or dry) in the tumble drier, as it may cause burns or create permanent creases in the linens.

Never iron dried linens.

The shrinkage rates of bed linen items are carefully calculated. Inserting the product into the mangle in the weft direction (width instead of length) causes an abnormal shrinkage in the product length of up to 10%.





# CARE GUIDE

PHASE	WATER LEVEL	PRODUCT DOSAGE	TEMPERATURE °C (°F)	NOTES
Prewash	High	Detergent	30 (85)	-
Drain	-	-	-	-
Main Wash	Medium	Detergent	60 (140)	Bleach to be used only when necessary
Cool Down	High	-	-	Add cold water
Rinse Warm	High	-	40 (105)	-
Rinse Cold	High	-	-	Repeat 2 times
Bleach Neutralization	Medium	Bleach deactivation products	As indicated by chemical suppliers	-
Final Rinse	High	Souring agents	-	-
Pre-Drying	-	-	-	Gentle action, residual humidity 52%
Drying-Ironing	-	-	180 (360)	Maximum ironer-bed temperature

## BATH LINENS

### FIRST WASHING

Rinse the product before washing. Use more water (higher ratio water to linens) and load your washing device with fewer items.

### FOLLOWING WASHINGS

Prewash at 30°C (85°F).

Wash with detergents at 60°C (140°F). For very soiled and white items, the washing temperature may be increased.



# CARE GUIDE

If necessary, bleach using oxygen-based products. If chlorine bleach is used, always use the minimum quantity of chlorine, otherwise the appearance and lifecycle of the product will be adversely affected.

Rinse thoroughly, lowering the temperature of the water, to remove chlorine and any chemical agents.

Carry out normal neutralization at the end of the washing cycle to neutralize all bleach residues and to reduce the alkalinity.

## **USE OF DETERGENTS & BLEACHES**

To obtain the best results in washing, the dosage of detergents and bleach should be adjusted to the specific characteristics of the water and correctly tuned by your supplier of detergents in collaboration with the manufacturer of your laundry equipment.

Color Linens: Never use detergents containing optical brightening agents (OBA), as they will damage the color look and change the shade / cast of the product.

## **DRYING**

Spin extraction and tumbling are steps in which care must be used. Use gentle spin and make sure that drying is at a low temperature and gentle process.

## **WAY OF TREATMENT**

Before a laundry washing, the loops of new terry are not yet completely locked in the fabric structure; therefore, they might pull easily if the products are not handled with care.

After the first washing where the fabric compacts, the loops stabilize in the groundweave, also acquiring softness and absorption properties. We strongly recommend to open the packaging with attention and care.



# CARE GUIDE

Never overload the washing machine and keep color linens separate from white.

Never exceed with chemicals.

Enzymes or sodium peroxide-based bleach should be preferred to remove heavy soil or stains.

If and when chlorine bleach is used, pour the bleach solution in the washer only after the water is at full level and the linens are properly wet.

Never leave linens (wet or dry) in the washing machine or tumble drier, as it may cause creasing and burns to the linen or even mold.

PHASE	WATER LEVEL	PRODUCT (DOSAGE)	TEMPERATURE °C (°F)	NOTES
Prewash	High	Detergent	30 (85)	-
Drain	-	-	-	-
Main Wash	Medium	Detergent	60 (140)	Bleach to be used only when necessary (if chlorine, ensure pH greater than 11)
Rinse Warm	High	-	40 (105)	-
Rinse Cold	High	-	Cold	Repeat 2 times
Bleach Neutralization	High	Bleach deactivation products	As indicated by chemical supplier	-
Final Rinse	High	Souring agents	-	-
Drying	-	-	Medium	Gentle action. Do not over dry



# CARE GUIDE

## TABLE LINENS

### FIRST WASHING

Rinse the product before washing. Use more water (higher ratio water to linens) and load your washing device with fewer items.

### FOLLOWING WASHINGS

Prewash at 30°C (85°F).

Wash with detergents at 60°C (140°F). For very soiled and white items, the washing temperature may be increased.

If necessary, bleach using oxygen-based products. If chlorine bleach is used, always use the minimum quantity of chlorine, otherwise the appearance and lifecycle of the product will be adversely affected.

Rinse thoroughly, lowering the temperature of the water, to remove chlorine and any chemical agents.

Carry out normal neutralization at the end of the washing cycle to neutralize all bleach residues and to reduce the alkalinity.

### USE OF DETERGENTS & BLEACHES

To obtain the best results in washing, the dosage of detergents and bleach should be adjusted to the specific characteristics of the water and correctly tuned by your supplier of detergents in collaboration with the manufacturer of your laundry equipment.

Color Linens: Never use detergents containing optical brightening agents (OBA), as they will damage the color look and change the shade / cast of the product.





# CARE GUIDE

## DRYING & IRONING

Pressing and tumbling could damage the fiber.

Set the pressure of the press to the lowest level possible or gentle spin and make sure that tumble drying be at a low temperature and gentle process to obtain a residual humidity of 52 to 55% (i.e. 1.00 kg dry linen must weigh 1.52 to 1.55 kg when extracted damp from the tumbler).

Tumble drying for too long and at too high a temperature damages the linens by causing creases, abrasions, “elephant skin” wrinkles and shrinkages up to 20%.

Iron linens on a mangle or calendar, with the roller temperature not exceeding 180°C (360°F).

## WAY OF TREATMENT

Never overload the washing machine.

Color Linens: Always keep separate from white.

Do not exceed with the chemicals in the wash.

Enzymes or sodium peroxide-based bleach should be preferred to remove heavy soil or stains.

If and when bleaching is required, pour the bleach solution in the washer mandatorily when the water is at full level and the linens are properly wet.

Never leave table linens (wet or dry) in the tumble drier, as it may cause burns or create permanent creases in the linen.

Never iron dried linens.



# CARE GUIDE

PHASE	WATER LEVEL	PRODUCT (DOSAGE)	TEMPERATURE °C (°F)	NOTES
Prewash	High	Detergent	50 (105)	-
Drain	-	-	-	-
Main Wash	Medium	Detergent	60 (140)	Bleach to be used only when necessary (if chlorine, ensure pH greater than 11)
Cool Down	High	-	-	Add cold water
Rinse Warm	High	-	40 (105)	-
Rinse Cold	High	-	-	Repeat 2 times
Bleach Neutralization	Medium	Bleach deactivation products	As indicated by chemical supplier	-
Final Rinse	High	Souring agents	-	-



# CARE GUIDE

## CARE LABELING SYMBOLS

For all products, please make reference to the care symbols shown in the care label affixed.



WASHING  
(Wash Tub)



BLEACHING  
(Triangle)



DRYING  
(Square)



IRONING  
(Hand Iron)



DRY-CLEANING  
(Circle)

A few samples to help in reading the care symbols:

<b>WASHING</b>	The numbers in the washing tub specify the maximum temperature in ° C which must not be exceeded. The bar underneath the wash tub characterizes a mild process with reduced mechanical action especially for easy care articles. The double bar indicates a very mild process especially for woolen articles	
<b>BLEACHING</b>	Any oxidizing bleaching agent allowed	
	Do not bleach	
<b>DRYING</b>	The number of dots indicates the severity as regards to temperature of the tumble drying process.	
	Tumble drying possible, lower	
	Tumble drying possible, normal temperature	
<b>IRONING</b>	The number of dots indicates the severity as regards to temperature of the hand iron.	
	110° C / 230° F                160° C / 300° F                180° C / 360° F	
<b>DRY-CLEANING</b>	<p>Professional dry cleaning mild process. The letters within the circle specify the solvents that can be use.</p> <p>(P=Perchloroethylene, hydrocarbons; F=Hydrocarbons)</p> <p>The bar under the circle indicates a mild professional dry cleaning process, the double bar a very mild process. These may concern mechanical action and/or drying temperature and/or water addition in the solvent.</p>	





+1 212 299 0400  
frette.com