

SPILL-STOP®

a complete line of bar accessories





The art of mixology starts with passion, knowledge, and skill. A mixologist relies on premium barware to create a perfect cocktail. Spill-Stop® has the professional quality tools mixologists want. Our premium barware products are available in your choice of stainless, copper, or 24k gold finish. Imported from England, these metal tools reflect years of commitment to quality mixology.

Copper and gold finished items are hand wash only.

Jerry Spring Whisk

Perfect tool for flip cocktail preparation. Use for recipes that include eggs. For best results use at the "dry shake" or "reverse dry shake" stage to increase emulsification creating denser, longer lasting foam. Individually carded.

#800-00 Stainless Steel



#818-02

#818-01

#818-03

Shakers

All cans are made from stainless steel with a reinforced bottom. Available in three finishes. 18-ounce and 28-ounce boxed as a two-piece set.

#803-21 Stainless Steel

#803-22 24k Gold Plated

#803-23 Copper Plated

Strainers

All strainers are made from stainless steel. Available in three finishes. Individually boxed.

#8012-1 Bonzer® Hawthorne Strainer, Stainless Steel

#8012-2 Bonzer® Hawthorne Strainer, 24k Gold Plated

#8012-3 Bonzer® Hawthorne Strainer, Copper Plated

#8016-1 Bonzer® Fine Strainer, Stainless Steel

#8016-2 Bonzer® Fine Strainer, 24k Gold Plated

#8016-3 Bonzer® Fine Strainer, Copper Plated

#8018-1 Bonzer® Julep Strainer, Stainless Steel

#8018-2 Bonzer® Julep Strainer, 24k Gold Plated

#8018-3 Bonzer® Julep Strainer, Copper Plated

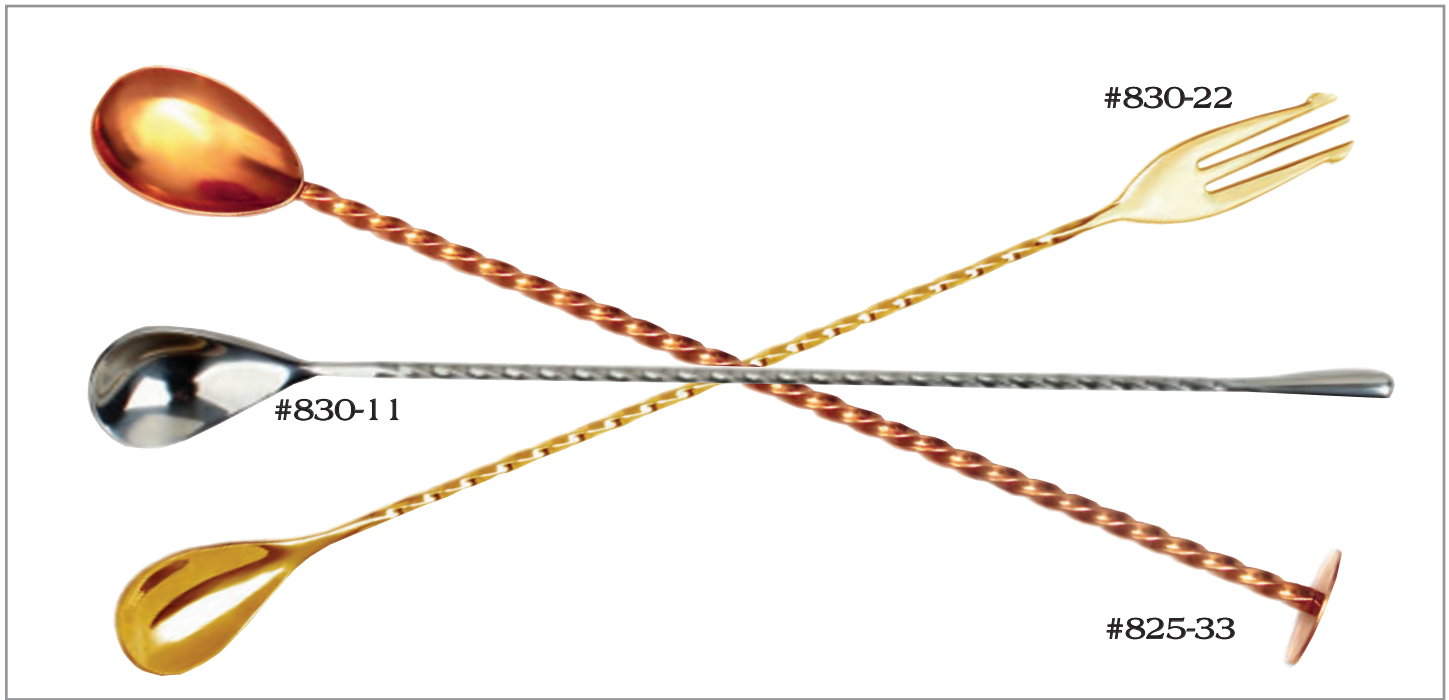
Jiggers

All jiggers are made from stainless steel. Available in three finishes. Measures 1 x 2 oz. with additional markings of 1/2, 3/4 and 1-1/2 oz. inside. Individually packaged.

#818-01 Stainless Steel

#818-02 24k Gold Plated

#818-03 Copper Plated



Mixing Spoons

All spoons are made from stainless steel. Available in three finishes. Individually packaged.

DROPLET

- #830-11 Stainless Steel, 30cm
- #830-12 24k Gold Plated, 30cm
- #830-13 Copper Plated, 30cm
- #840-11 Stainless Steel, 40cm
- #840-12 24k Gold Plated, 40cm
- #840-13 Copper Plated, 40cm
- #850-11 Stainless Steel, 50cm
- #850-13 Copper Plated, 50cm

TRIDENT - Convenient fork end to garnish drinks.

- #830-21 Stainless Steel, 30cm
- #830-22 24k Gold Plated, 30cm
- #830-23 Copper Plated, 30cm
- #840-21 Stainless Steel, 40cm
- #840-22 24k Gold Plated, 40cm
- #840-23 Copper Plated, 40cm
- #850-21 Stainless Steel, 50cm
- #850-23 Copper Plated, 50cm

BONZER® DISC MUDDLER -

Twisted handle with disc muddler perfect for pouring liquid down the handle and layering off the disc end. Spoon provides a 5ml measure.

- #825-31 Stainless Steel, 27cm
- #825-32 24k Gold Plated, 27cm
- #825-33 Copper Plated, 27cm
- #840-31 Stainless Steel, 40cm
- #840-32 24k Gold Plated, 40cm
- #840-33 Copper Plated, 40cm

Yarai Style Glassware

Classic Yarai diamond cut pattern. Fragile. Hand wash only.

BITTERS BOTTLE - Japanese glass bottle with stainless steel screw on dasher cap. Capacity: 90ml, Height: 5.75", Diameter: 2.75". #800-20

MIXING GLASS - Hand blown, hand cut, seamless mixing glass with wide, sturdy base and beaker-like spout. Note: Due to the nature of glassware, weight and size may vary; bubbles may be visible but are not a defect. Capacity: 600ml, Height: 5.75", Diameter: 3.5". #800-22





#400-00

#401-02

#402-00

#12-600

#442-00

#444-00

Swords & Arrows

Available in assorted colors or by solid case pack of black. Packed 1,000 ea./inner, 10,000 ea./cs. Minimum order one case.

- #400-00 Sword Picks, Assorted Colors, Solid Color Inner Pack. 3"L
- #400-02 Sword Picks, Black Only. 3"L
- #401-02 Arrow Picks, Black Only. 3-1/4"L

Fancy Parasol Picks

Multi-color designs printed on assorted colored papers. 1 gross per box.

- #402-00 3 3/4" dia. Open, Assorted

Glass Rimmers

Rims the glass with salt or sugar in seconds.

- #442-00 Two-Tier, rims a 6-1/2" glass, Marked Lime Juice & Salt
- #442-01 Replacement Sponge, 6-1/2" 12 ea./bg. Center Hole dia. 1-1/2"
- #444-00 Three-Tier, rims a 5-1/2" glass, Marked Lime Juice, Salt & Sugar
- #444-01 Replacement Sponge, 5-1/2" 12 ea./bg. Center Hole dia. 1-1/2"

Bomb Cups

Disposable, stackable, plastic cup with 1 ounce shot center chamber and a 2-3/4 ounce surrounding area for the chaser. Packed 50 per sleeve, 10 sleeves per case. Minimum order one case.

- #12-600 Clear
- #12-604 Neon Green

Service Mats

Ideal for bar service areas. Flexible for easy cleaning in bar sink.

- #161-00 12-1/4" x 18-1/4" x 3/8"H, Brown
- #161-02 12-1/4" x 18-1/4" x 3/8"H, Black

Bar Mats

Perfect work surface for any bar. Non-slipping eliminates breakage by gripping glasses.

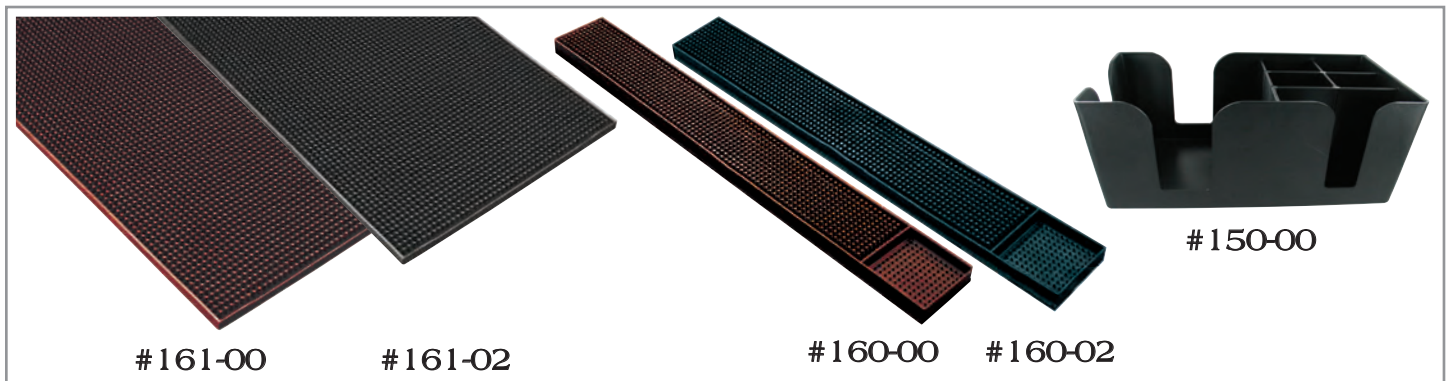
- #160-00 3-1/4" x 24-1/4" x 1/2"H, Brown
- #160-02 3-1/4" x 24-1/4" x 1/2"H, Black

Bar Aide



This organizer eliminates fumbling for your cocktail accessories. Everything has its place.

- #150-00 9"L, 5-1/4"W, 4-1/4"H,
Napkin Opening 5" x 5"



#161-00

#161-02

#160-00

#160-02

#150-00



Tip Trays

#181-00

#181-01

#70-263

#70-265

#70-341

Tip Trays

Two sizes: Standard 4" x 6" or deluxe 5" x 8".
Packed 1 dz./bx. Dishwasher safe.

PLAIN

IMPRINTED

#7212-0	4" x 6", Brown	#7212-1	4" x 6", Brown
#7212-2	4" x 6", Black	#7212-3	4" x 6", Black
#7214-0	5" x 8", Brown	#7214-1	5" x 8", Brown
#7214-2	5" x 8", Black	#7214-3	5" x 8", Black

Tip Jars

Clear plastic carafe-shaped jar. Bottom unscrews for easy access.

#181-00	10-3/4"H, Plain, Clear	1 dz./cs.
#181-01	10-3/4"H, "Thank You"	1 dz./cs.

Drip Catchers

Ideal for bar service areas. Helps contain overflows and drips. Black tray with removable black grid.

#1451-B	4-1/2"W x 7/8"H
#1452-B	6"W x 7/8"H

Ash Trays

Plastic. Packed 1 dozen per inner box.

#70-263	4" dia. x 1-1/2"H, Black	12 dz./cs.
#70-265	4" dia. x 1-1/2"H, Red	12 dz./cs.

Executive model. Center safety ridge and cigar notch. Packed 1 dozen per inner box.

#70-341	7" dia., Black
---------	----------------

Ketchup Saver

Transfer ketchup to other bottles without the mess.

#12-301	Opening 1-1/2" dia.	2 ea./pack
---------	---------------------	------------

Posi-Fill Dispensers

Quickly refill standard salt and pepper shakers with no mess. Sold individually.

#12-501P	Pepper
#12-501S	Salt



#1452-B

#12-301

#12-501P

#12-501S

Waiter's Corkscrews

Chrome-plated multi-functional corkscrew, knife and bottle opener.

#131-01 4-1/4"L 1 dz./ctn.

#131-03 4-3/8"L, w/Black Plastic Handle 1 dz./ctn.

Wood Handle Corkscrew

Self-pulling. Just turn and cork is automatically lifted.

#131-04 5-5/8"L 2 dz./ctn.

Winged Corkscrew

Chrome-plated corkscrew with bottle opener designed with twist-in, press-down wings for swift cork removal.

#131-02 6-5/8"L 1 dz./ctn.

Pocket Corkscrews



Inexpensive plastic corkscrew disassembles for safe handling. 4"L housed, 3-1/2"L assembled.

#132-00 Beige

#132-02 Black

#132-03 Burgundy

#132-04 Green

#132-05 Blue

#132-07 White

Vacu Vin Wine Saver

Air is extracted from the bottle by the vacuum pump and resealed with a reusable rubber stopper.

#13-740 Pump w/One Stopper Individually Carded, White

#13-742 Extra Stoppers, 2/pack

#13-745 Extra Stoppers, 10/bag

Vacu Vin Champagne Saver

Non-drip serving. Patented "Pull Down Bottle Grip". Keeps opened bottles fresher longer. Fits most champagne bottles.

#13-746

Vacu Vin Wine Aerator

Transparent, detachable top. Stores around the neck of most wine bottles. Hand wash.

#13-747

Vacu Vin Wine Server

Non-drip pouring every time. Elegant crystal appearance. Fits most wine bottles.

#13-748 2 ea./pack



#131-01



#131-03



#131-04



#131-02



#132-00

Shown ready to use and housed.



#13-740



#13-746



#13-747



#13-748

Cocktail Shakers

Stainless steel with reinforced bottom. Fits standard mixing glasses.

- #103-00 28 oz., 6-7/8"H, Top dia. 3-5/8" 1 dz./ctn.
 #103-01 16 oz., 4-1/2"H, Top dia. 3-1/4" 1 dz./ctn.



#103-00



#103-20



#103-30



#103-50

Vinyl-Coated Shakers

Stainless steel with vinyl coating. Individually boxed.

- #103-20 28 oz., Black, 6-7/8"H, Top dia. 3-5/8"
 #103-21 16 oz., Black, 4-1/2"H, Top dia. 3-1/4"
 #103-30 28 oz., Red, 6-7/8"H, Top dia. 3-5/8"
 #103-31 16 oz., Red, 4-1/2"H, Top dia. 3-1/4"
 #103-50 28 oz., Blue, 6-7/8"H, Top dia. 3-5/8"
 #103-51 16 oz., Blue, 4-1/2"H, Top dia. 3-1/4"

3-Piece Shaker Sets

Stainless steel shaker, strainer and jigger in one compact unit. Individually packaged.

STANDARD

- #103-02 28 oz., Base 6-5/8"H, w/Cap 9-1/2"H, Top dia. 3-3/4"
 #103-03 16 oz., Base 3-3/4"H, w/Cap 7-3/8"H, Top dia. 3"
 #103-04 8 oz., Base 3-1/8"H, w/Cap 5-3/4"H, Top dia. 3"

DELUXE

- #103-12 24 oz., Base 6-5/8"H, w/Cap 9-3/8"H, Top dia. 3-5/16"
 #103-13 16 oz., Base 5"H, w/Cap 7-5/8"H, Top dia. 3"
 #103-14 8 oz., Base 3-1/2"H, w/Cap 5-3/4"H, Top dia. 2-1/2"

VINYL-COATED DELUXE

- #103-22 24 oz., Black, Base 6-5/8"H, w/Cap 9-3/8"H, Top dia. 3-5/16"
 #103-23 16 oz., Black, Base 5" H, w/Cap 7-5/8"H, Top dia. 3"
 #103-24 8 oz., Black, Base 3-1/2"H, w/Cap 5-3/4" H, Top dia. 2-1/2"

CLEAR PLASTIC

- #103-92 28 oz., Base 6-7/8"H, w/Cap 9-3/4"H, Top dia. 3-3/4"
 #103-93 16 oz., Base 4-1/2"H, w/Cap 7-3/8"H, Top dia. 3-3/4"



#103-02



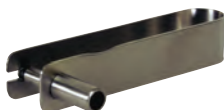
#103-12



#103-22



#103-92



#6358-0



#6358-2

Olive Express™

The fastest way to stuff olives. Without pressing the utensil together, pick up the filling until the chamber is full. Squeeze utensil together to release filling into olive.

- #6358-0 Brushed Stainless Steel
 #6358-2 High Impact Polystyrene



Bottle Cap Catchers

Keyhole mounting slots for easy removal. Brushed stainless steel.

#13-926 5-1/4"L x 3-1/4"W x 6-3/8" Bin H, 9-1/4"H

#13-929 5-1/4"L x 3-1/4"W x 10" Bin H, 13"H

Old Fashioned Bottle Opener



Heavy-duty zinc die-cast. Individually boxed with screws.

#13-300 3-1/4"L x 2-3/4"W x 1-1/4"D

Lemon/Lime Peeler

Handy for every bartender.

#1025-0 6-1/2"L 1 dz./ctn.

Bar Knife

All-purpose tool for condiments. 3-1/2"L stainless steel blade.

#1200-0 7-1/4"L 1 dz./ctn.

Ice Chipper

Heavy die-cast body with six hardened steel points.

#1420-0 9"L 1 dz./ctn.

Cutting Board

Bar-sized board is made from a non-porous poly material for safe food handling.

#1226-0 6"W x 10"L x 1/2"H, White

Can Punches

Nickel-plated.

#13-475 8"L, Combo Std./Gnt. 1 dz./ctn.

#13-476 7"L, Giant 1 dz./ctn.

Bottle/Can Openers

#13-206 Wire Bottle Opener
Chrome Plated, 3-1/2"L x 1-3/8"W

#13-411 Bottle/Can Opener
Nickel Plated, 4"L x 3/4"W

Super Openers

Polished stainless steel.

#13-352 7"L 1 dz./ctn.

VINYL-COATED

#13-353 7"L, Red 1 dz./ctn.

#13-354 7"L, Green 1 dz./ctn.

#13-355 7"L, Blue 1 dz./ctn.

#13-358 7"L, Black 1 dz./ctn.

POWDER-COATED

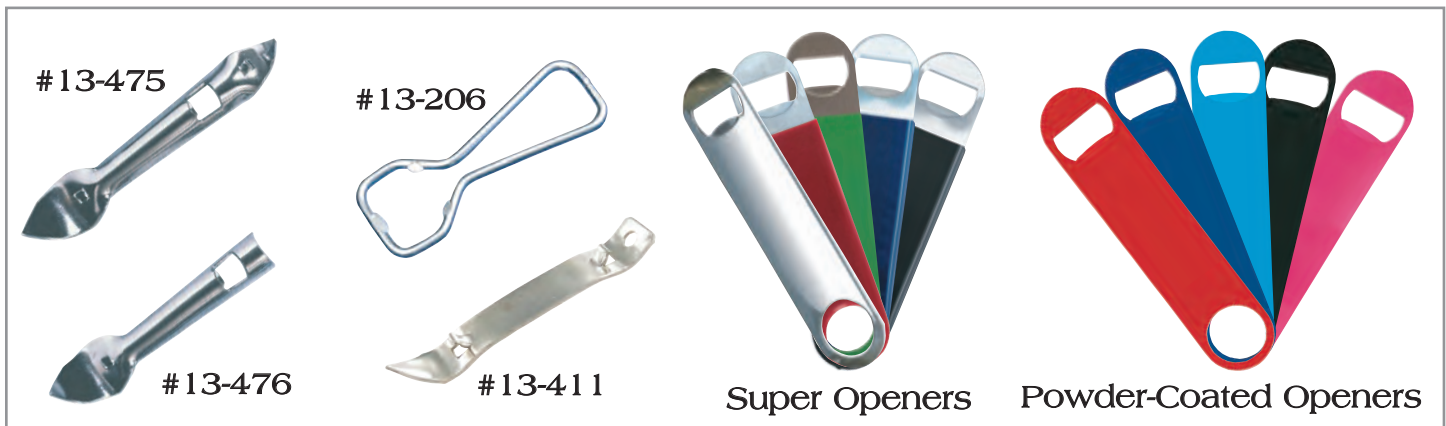
#13-343 7"L, Red 1 dz./ctn.

#13-345 7"L, Blue 1 dz./ctn.

#13-346 7"L, Light Blue 1 dz./ctn.

#13-348 7"L, Black 1 dz./ctn.

#13-349 7"L, Pink 1 dz./ctn.



Super Openers

Powder-Coated Openers



Tongs

Polished stainless steel for handling rolls, doughnuts, frankfurters, ice, etc.

#1406-0	6"L Roll Tong	1 dz./ctn.
#1406-1	6"L Ice Tong	1 dz./ctn.

Bar Spoons

Polished stainless steel bar spoon with twisted handle. Comes with or without red knob.

#1109-3-TK	9-3/4"L, w/Knob	1 dz./ctn.
#1111-2-T	11"L	1 dz./ctn.
#1111-3-TK	11-1/8"L, w/Knob	1 dz./ctn.
#1113-2-T	10"L, Dime	1 dz./ctn.

Jiggers

Polished stainless steel. Packed 1 dz./ctn.

#100-11	1/2 x 1 oz.	#100-15	3/4 x 1-1/2 oz.
#100-12	1 x 1-1/4 oz.	#100-16	7/8 x 1-1/4 oz.
#100-13	3/4 x 1 oz.	#100-17	1 x 1-1/2 oz.
#100-14	3/4 x 1-1/4 oz.	#100-18	1 x 2 oz.

Muddlers

#145-08	8"L, Hardwood
#145-10	10"L, Hardwood
#145-20	8-1/2"L, Black Plastic
#145-00	7-1/2"L, Brushed Stainless Steel

Lemon Lime Squeezers

Polished heavy-duty stainless steel. Easily cleaned.

#1020-0	Strainer Style	1 dz./ctn.
#1022-0	Open Jaw Style	1 dz./ctn.

Julep Strainer

Polished heavy-duty stainless steel.

#1018-0	6-1/4"L x 3"W	1 dz./ctn.
---------	---------------	------------

Cocktail Strainers

Polished heavy-duty stainless steel. Closely coiled spring will not jump off.

#1010-0	1 Prong, 4-1/4"L	1 dz./ctn.
#1012-0	2 Prong, 5-1/2"L	1 dz./ctn.
#1014-0	4 Prong, 5-3/4"L	1 dz./ctn.



Chillable Condiment Container

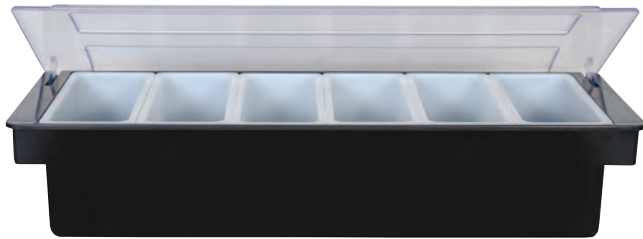
Black plastic condiment holder has a semi-clear top with six 1-pint, white, hard, plastic bins. Deep tray allows for one-inch ice cooling underneath bins. BPA free.

#155-00 Container w/Six 1-Pint Bins,
19-1/2"L x 6-1/4"W x 4-1/2"H

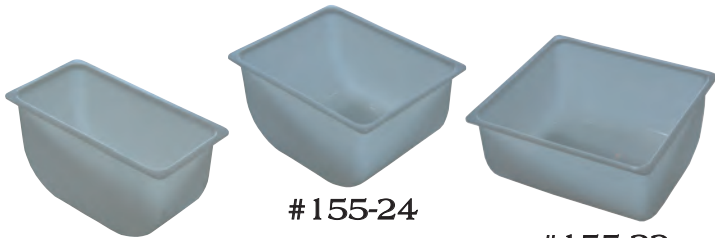
#155-16 Extra 1-Pint Bins,
5-1/2"L x 3"W x 3"D

#155-24 Extra 1.5-Pint Bins,
5-1/2"L x 4-3/8"W x 3"D

#155-32 Extra 1-Quart Bins,
5-1/2"L x 6"W x 3"D



#155-00



#155-16

#155-24

#155-32

Ice Scoop

For crushed or cracked ice, candy, nuts, sugar, etc. Stainless steel.

#1400-0 4 oz. 1 dz./ctn.



#1400-0

#1401-7

Plastic Scoops

Stackable.

15"L x 6"W x 3-1/2"D

#1401-3 82 oz., Red

#1401-5 82 oz., Blue

#1401-7 82 oz., White

Slotted Scoops



Separates water from ice as you scoop. Heavy-duty plastic.

10-1/4"L x 3-7/8"W x 2-1/2"D

#1408-2 8 oz., Black

#1408-5 8 oz., Blue

10-3/4"L x 4-1/8"W x 2-3/4"D

#1412-2 12 oz., Black

#1412-5 12 oz., Blue



#1408-2

#1412-5

Scoop Holders

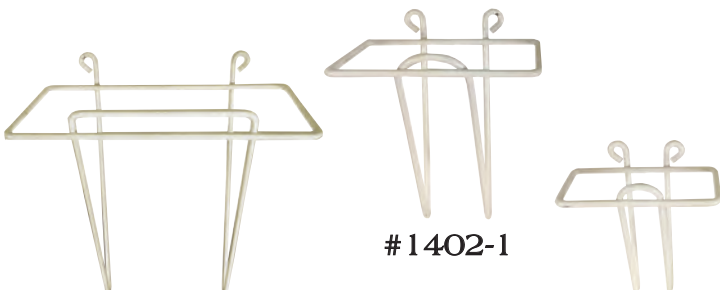


Wire formed holders to hold scoops securely. Open cage style that will not accumulate debris. Made of rust-resistant powder coated steel wire. Plastic bolts and nuts provided for attaching to any vertical surface.

#1402-0 Large, F/32-82 oz. Scoops,
Cage Dims Top 6-1/2"W,
Bottom 3-15/16"W, 6-7/8"H,
3-1 1/16"D

#1402-1 Medium, F/8-16 oz. Scoops
Cage Dims Top 3-7/8"W,
4-1/4"H, 2-3/4"D

#1402-2 Small, F/2-6 oz. Scoops
Cage Dims Top 3-1/2"W,
4"H, 1-1/4"D



#1402-0

#1402-1

#1402-2



● ● ● ● ● ● ● Mix-N-Pour Units

● ● ● ● ● ● ● Replacement Parts

Multi-Purpose Mix-N-Pour Units

Lightweight and durable. Fits speed racks. Each is a complete unit with canister, non-slip neck, lid and spout. Color-coded contents for easy identification: red, green, orange, yellow, clear and brown. Cases are assorted colors.

#1691	Pint Complete	12 ea./cs.
#1692	Quart Complete	12 ea./cs.
#1693	Half Gallon Complete	6 ea./cs.
#1694	Gallon Complete	6 ea./cs.

Replacement Parts Sold Individually:

#1699	Spout
#1698	Neck
#1697	Lid
#169-01	Pint Base
#169-02	Quart Base
#169-03	Half Gallon Base
#169-04	Gallon Base

Stainless Speed Racks

Available in three lengths to suit individual needs. Keyhole mount or hangers sold separately.

Single Racks

#13-522	22"L Holds Five 750ml Bottles
#13-532	32"L Holds Eight 750ml Bottles
#13-542	42"L Holds Ten 750ml Bottles

Double Racks

#13-622	22"L Holds Ten 750ml Bottles
#13-632	32"L Holds Sixteen 750ml Bottles
#13-642	42"L Holds Twenty 750ml Bottles

#13-500 Hangers F/Above Speed Racks, Sold by the Pair, 9-1/4"L

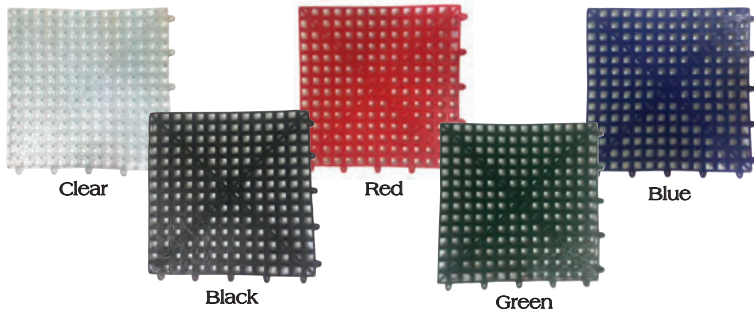


#13-522

#13-622

#13-500

Interlocking Mats



Clear

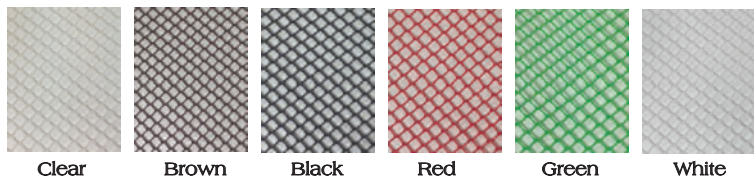
Black

Red

Green

Blue

Bar Mesh



Clear

Brown

Black

Red

Green

White



#1243-0

#105-00



#1175-0



#1176-0

Interlocking Mats

A premium shelf liner available in five colors to fit any décor. Perfect for use in bar, nightclub and foodservice operations or wherever you need bar matting.

#162-00	12" x 12", Clear
#162-02	12" x 12", Black
#162-03	12" x 12", Red
#162-04	12" x 12", Green
#162-05	12" x 12", Blue

Bar Mesh

Plastic mesh—rugged, long lasting—can be cut to any size or shape.

#170-00	24"W, Clear	40'L Roll
#170-01	24"W, Brown	40'L Roll
#170-02	24"W, Black	40'L Roll
#170-03	24"W, Red	40'L Roll
#170-04	24"W, Green	40'L Roll
#170-07	24"W, White	40'L Roll

Bar Apron



#105-00 Bar Apron, No Pocket

Beer Tap Stopper

Protect your draft beer after closing time from dust and insects with this cork. Push the tapered cork inside the faucet after closing. The plastic material allows the corks to be soaked in a sanitizing solution during the day so they are ready for use that night. Packed 12 each per poly bag.

#1243-0 2-1/8"L, Tapers from 13/32" to 11/16" dia.

Steramine™ Tablets



Quaternary solution for sanitizing food contact surfaces. Use one tablet per gallon of water to prepare sanitizing solutions at the proper concentration required by health department regulations. 150 tablets per bottle.

#1175-0	Tablets	6 ea./cs.
#1176-0	Test Kits	15 strips

Glass Brushes



Popular double and triple glass brushes. Solid cast base with rubber suction to hold firmly to bottom of sink. 10 each per master.

- #542-00 Double, 8-1/2"H x 6-1/2"W x 4-1/2"D
- #543-00 Triple, 8-1/2"H x 9"W x 4-1/2"D
- #545-00 Replacement Brush, 7"L



Electric Upright Glass Washer

"Redhead" Glass Washer, 5-brush, (4) 7" brushes and (1) 8-3/4" center brush, 1/3 HP, 4.3 amps, 115v/60/1-ph, NEMA 5-15P, CE. Quick and easy installation. Removes stains on glass surface.

13-1/2"L x 8"W x 18"H.

- #555-00 Electric Glass Washer
- #555-01 Outside 7" Replacement Brush
- #555-02 Center 8-3/4" Replacement Brush



Bar Mop

White cotton terrycloth towel.

- #1007-0 16" x 19" Sold by the dozen.

Bar Towel

Economical and tough white cotton broadcloth with colored stripe.

- #1004-0 14" x 25" Sold by the dozen.



Bar Drain Tray



Complete with drain extension tube that fits into overflow pipe.

- #13-760 14"L x 5"W x 3"D
- #13-761 Replacement Tube, 3-1/4"L, 1/2" ID, 5/8" OD



Overflow Pipes



Diameters listed are for sink drain sizes.

- #13-700 7"L, F/1" to 1-1/8" dia. Tube, 5/8" ID, 3/4" OD
- #13-701 10"L, F/1-3/8" to 1-5/8" dia. Tube, 13/16" ID, 1" OD

#13-760

#1004-0

Drain Funnel



Designed to fit into #13-700 overflow pipe. Made of polyethylene. Packaged with medium and coarse screens.

- #13-803 7-1/8" dia.



#13-700

#13-803



PLASTIC

350 Series



Plastic Pourers

Molded of an extremely soft, flexible material that will last, with care, indefinitely. Packed 1 dozen/bag. 1 gross of 1 color per carton. Minimum order of 1 gross.

- #350-00 Semi-Clear
- #350-01 Sparkle Red
- #350-02 Sparkle Green
- #350-03 Fluorescent Red
- #350-04 Green
- #350-05 Blue
- #350-06 Yellow
- #350-07 White
- #350-08 Black
- #350-09 Scarlet

Approved by the Flair Bartenders Association.

Disposapourer

Inexpensive disposable pourer. Available in red only. Packed 1 gross/bag, 12 gross/cs. Minimum order of 12 gross.

- #333-00 Red

Plastic Speed Pourers

Speed version of #350.

- #355-03 Fluorescent Red
- #355-08 Black

Plastic Pourers

Molded of strong plastic with a soft poly-kork securely attached. Packed 1 dozen/bag, 1 gross/carton. Minimum order of 1 gross.

- #360-00 Clear
- #361-00 Clear w/Black Collar
- #365-00 Smoke
- #366-00 Smoke w/Black Collar
- #370-00 Chrome
- #371-00 Chrome w/Black Collar

Plastic Pourers w/Extra Large Poly-Kork

Fits oversized quart, liter, half gallon, 1.75 liter and gallon bottles. Packed 1 dozen/bag.

- #313-60 Clear Ban-M Pourer (available in 6 colors)
- #360-60 Clear
- #365-60 Smoke
- #370-60 Chrome

Dust caps available, see pages 18 & 19.



POURERS



"The Original" BAN-M® Pourers

"The one with the screen." Keeps insects out. Packed 1 dozen/bag. 1 gross of 1 color per carton. Minimum order of 1 gross.

- #313-00 Clear w/Black Collar
- #313-02 Smoke w/Black Collar
- #313-03 Red w/Black Collar
- #313-04 Green w/Black Collar
- #313-05 Blue w/Black Collar
- #313-06 Amber w/Black Collar

Whiskeygate

Packed 1 dozen/bag.

- #320-00 Clear, No Collar
- #320-01 Clear w/Black Collar
- #320-02 Black w/Black Collar
- #320-03 Red w/Red Collar
- #320-05 Blue w/Blue Collar

- #320-10 Black Dust Cap

Packed 144 ea./bag for non-screened Whiskeygates only.

Whiskeygate w/Screen

- #320-01SC Clear w/Black Collar, Screened
- #320-02SC Black w/Black Collar, Screened

Posi-Por Free Pourers

Made of the same high quality materials as the measuring pourers. Available in three cork sizes. Packed 1 dozen/bag.

- #387-01 Clear w/Standard Cork
- #387-01OS Clear w/Red Cork,
Fits oversized quart and liter bottle necks along with half gallon and 1.75 liter bottles.
- #387-01AC Clear w/Amber Cork,
Fits unusually large bottle necks along with gallon bottles.

- #303-02 Dust Cap for Above Pourers

Mason Jar Pourer

Fits standard 2-1/2" mouth (not wide mouth) Mason jars commonly used by moonshine distillers. Free flow spout permanently affixed to screw-on Mason jar cap. Packed one dozen/bag.

- #381-00 Clear/Gold





MEASURING

Posi-Por 2000 Series



#389-2
RED
Black Collar



#387-2
CLEAR
Black Collar



#386-2
SMOKE
Black Collar



#384-2
GREEN
Green Collar



#382-2
NEON RED
Black Collar



#385-2
NEON BLUE
Black Collar



#383-2
NEON GREEN
Black Collar



#389-1
RED
No Collar



#387-1
CLEAR
No Collar



#386-1
SMOKE
No Collar



#384-1
GREEN
No Collar



#382-1
NEON RED
No Collar



#385-1
NEON BLUE
No Collar



#383-1
NEON GREEN
No Collar



**Posi-Por 2000
with the
Flip Top**

MEASURING POURER SIZING		
5th DIGIT OF ITEM NUMBER	CORRESPONDING OUNCE SIZE	CORRESPONDING BOTTOM COLOR
0	1/2 oz.	Lilac
1	5/8 oz.	Black
2	3/4 oz.	Green
3	7/8 oz.	Blue
4	1 oz.	Red
5	1-1/8 oz.	Purple
6	1-1/4 oz.	Clear
7	1-1/2 oz.	Yellow
8	2 oz.	White
9	1-3/4 oz.	Lime

For example, #389-26 would be a Posi-Por 2000 Red Spout with Black Collar measuring 1-1/4 oz. with a clear bottom stem color.

Posi-Por 2000 with Oversized Red Cork

Fits oversized quart and liter bottle necks along with half gallon and 1.75 liter bottles. Add "OS" after five-digit item number.

Posi-Por 2000 with Amber Cork

Fits unusually large bottle necks along with gallon bottles. Add "AC" after five-digit item number. Only available on Posi-Pors without collars. Additional cost will apply.



POURERS



Posi-Por Original Series



#399-2
RED
Black Collar



#397-2
CLEAR
Black Collar



#396-2
SMOKE
Black Collar



#398-2
CHROME-PLATED
Black Collar



#399-1
RED
No Collar



#397-1
CLEAR
No Collar



#396-1
SMOKE
No Collar



#398-1
CHROME-PLATED
No Collar

All Posi-Pors are available in ten sizes: 1/2, 5/8, 3/4, 7/8, 1, 1-1/8, 1-1/4, 1-1/2, 1-3/4 and 2 oz.
Packed 1 dozen of one size per bag. Flip tops are available for all Posi-Pors (except #398-1 and #398-2).
#303-02 dust cap available for 2000 series.



#13-910
(Back/Front)



#13-908
(Top View)



#13-910
(Top View)

Exacto-Pour® Test Kits

A liquid calibration system that is the most effective way to train and test bartenders. Tube markings are geared to hitting a specific target and the 1/16-oz. variance lines indicate how far off target you are. Durable plastic case and tubes. Funnel included.

- #13-908 3 Tube Set, Complete
- #13-910 7 Tube Set, Complete

METAL

Pourers arranged by speed.



Chrome Jet Por

As far as we know, the fastest pourer anywhere. Excellent for large drinks or more viscous liquors. Packed 1 dozen per poly bag. 1 gross per carton. Minimum order of 1 gross.

- #220-00 w/Natural Cork
- #220-50 w/Poly-Kork
- #220-51 w/Poly-Kork & Black Collar
- #220-60 w/Extra-Large Poly-Kork

Chrome Super Jet Por

Gooseneck spout for extra smooth, fast pouring. Packed 1 dozen per poly bag. 1 gross per carton. Minimum order of 1 gross.

- #245-50 w/Poly-Kork
- #245-60 w/Extra-Large Poly-Kork

Chrome Super Por

Medium fast speed pourer. Gooseneck spout for extra smooth, controlled pouring. Packed 1 dozen per poly bag. 1 gross per carton. Minimum order of 1 gross.

- #235-00 w/Natural Cork
- #235-50 w/Poly-Kork
- #235-51 w/Poly-Kork & Black Collar
- #235-60 w/Extra-Large Poly-Kork



Dust Caps

Packed 144 each per poly bag.

- #301-02 1/2" L, Black, F/#282, 285 (1/4" ID)
- #302-02 1/2" L, Black, F/#220, 235, 245 (1 1/32" ID)
- #303-02 3/4" L, Black F/#350, #360, #370, and Posi-Por 2000 Series (13/32" ID)

Longer length with a finger pull tab for easy removal. Packed 1 dozen per poly bag.

Narrow - 2-1/4" L, F/#220, 225, 282, 285, and non-screened 320 series (7/16" ID)

- #331-02 Black
- #331-03 Red

Wide - 1-1/4" L, F/#333, 350, 360, and 370 series (1/2" ID)

- #332-02 Black
- #332-03 Red

POURERS

Faster on left, slower on right.



Universal Dust Covers

Fits a wide assortment of pourers with or without collars. Packed 1 dozen per poly bag.

- #1241-0 Small 1-3/4"L, Smoke (F/#350 Only)
- #1242-0 Large 3"L, Smoke (Does not fit Posi-Por w/collar or #320 Whiskeygates)

Chrome Tapered Pourers

Seamless, tapered spout allows controlled, medium speed pouring. Packed 1 dozen per poly bag. 1 gross per carton. Minimum order of 1 gross.

- #285-00 w/Natural Cork
- #285-50 w/Poly-Kork
- #285-51 w/Poly-Kork & Black Collar
- #285-60 w/Extra-Large Poly-Kork
- #282-50 w/Black Plastic Breather Tube, Excellent for Oil & Vinegar!

Approved by the Flair Bartenders Association.



Imported Pourers

Packed 1 dozen per poly bag. 1 gross per carton. Minimum order of 1 gross.

- #225-50 Stainless Pourer w/Screen
- #296-50 Stainless Pourer w/Cap



Replacement Poly-Korks

Extra korks are available to fit most of our metal pourers.

For fifth, quart and liter bottles-cork fins range from 3/4" to 15/16".

- #PK-220-05 F/#220, 235, 245 50 ea./Bag
- #PK-285-05 F/#282, 285 50 ea./Bag

For 1.75 liter, half gallon and gallon bottles-cork fins range from 63/64" to 1-3/16".

- #PK-220-06 F/#220, 235, 245 12 ea./Bag
- #PK-285-06 F/#282, 285 12 ea./Bag

INDEX

Apron	12
Arrow Pick	4
Ash Trays	5
Ban-M® Pourers	14-15
Bar Aide	4
Bar Drain Tray	13
Bar Mats	4
Bar Mesh	12
Bar Mop	13
Bar Spoons	3, 9
Bar Test Kits	17
Bar Towel	13
Beer Tap Stopper	12
Bitter/Dash Bottle	3
Bomb Cups	4
Bonzer® Barware	2-3
Bottle Openers	8
Brushes, Glass	13
Can Openers	8
Cap Catchers	8
Capped Pourer	19
Champagne Saver	6
Chipper, Ice	8
Chrome Plastic Pourers	14, 17
Chrome Speed Pourers	18-19
Cocktail Shakers	2, 7
Cocktail Strainers	2, 9
Condiment Holder	10
Control Pourers	16-17
Copper Plated Barware	2-3
Corkscrews	6
Covers, Pourer	18-19
Cutting Board	8
"Dime" Bar Spoon	9
Dispensers, Posi-Fill	5
Disposapourer	14
Draft Cork	12
Drain Funnel	13
Drain Tray, Bar	13
Drip Catchers	5
Dust Covers	18-19
Exacto-Pour® Test Kits	17
Flip Tops	16
Funnel, Drain	13
Glass Brushes	13
Glass, Mixing	3
Glass Rimmers	4
Glass Washer	13
Gold Plated Barware	2-3
Hangers, Speed Rack	11
Ice Chipper	8
Ice Scoops	10
Interlocking Mats	12
Jiggers	2, 9
Julep Strainers	2, 9

Ketchup Saver	5
Knife, Bar	8
Lemon/Lime Peeler	8
Lemon/Lime Squeezers	9
Mats, Bar	4
Mats, Interlocking	12
Mats, Service	4
Mesh, Bar	12
Mesh Strainer	2
Mix-N-Pour	11
Muddlers	9
Olive Express™	7
Openers, Bottle, Can	8
Overflow Pipes	13

Parasol Pick	4
Peeler, Lemon/Lime	8
Picks, Arrow & Sword	4
Plastic Funnel	13
Plastic Scoops	10
Pocket Corkscrews	6
Posi-Fill Dispensers	5
Posi-Pors	15-17
Pourer, Capped	19
Pourers, Chrome	14, 17-19
Pourers, Measuring	16-17
Pourers, Oversized Corks	14-16, 18-19
Pourers, Plastic	14-17
Pourers, Speed	14, 18-19
Pourers, Whiskeygate	15
Pourers, With Screen	14-15, 19
Racks, Speed	11
Replacement Poly-Korks	19
Rimmers	4

Scoop Holders	10
Scoops, Plastic & Stainless	10
Screened Pourers	14-15, 19
Service Mats	4
Shakers	2, 7
Slotted Scoops	10
Speed Pourers	14, 18-19
Speed Racks	11
Spoons, Bar	3, 9
Squeezers, Lemon/Lime	9
Steramine™ Tablets	12
Strainers	2, 9
Stuffer, Olive	7
Sword Picks	4

Tap Cork	12
Three-Piece Shakers	7
Tip Jars	5
Tip Trays	5
Tongs, Roll & Ice	9
Towel, Bar	13
Tray, Bar Drain	13

Vacu Vin Wine Aerator	6
Vacu Vin Wine Saver	6
Vacu Vin Wine Server	6
Vacu Vin Champagne Saver	6

Waiter's Corkscrews	6
Whisk, Spring	2
Whiskeygates	15
Wine Aerator	6
Wine Saver	6
Wine Server	6
Winged Corkscrew	6
Wood Handle Corkscrew	6

Copyright © 2018
Summit Catalog Company • Centennial, CO 80112

GUARANTEE

We guarantee every SPILL-STOP® product against defects in workmanship or materials. Any defective merchandise will be replaced or repaired without charge. All merchandise claimed defective must be returned to us prepaid for our inspection. We cannot be responsible for merchandise mishandled in use. We reserve the right to change materials and specifications. The name SPILL-STOP® is your assurance of quality at the lowest possible prices.

POLICY

**RETURNED MERCHANDISE—
No merchandise will be accepted for return unless authorization to return has been given. A handling and restocking charge will be made.**

**SHORTAGES—
All claims for shortages must be made within 10 days after receipt of merchandise.**

**DAMAGES IN TRANSIT—
All claims for damages must be made immediately to carrier. No allowance will be made by us for such claims. If shipment arrives in damaged condition, please make a note of this on freight bill before receiving shipment.**

If damage is concealed, call carrier immediately for inspection. The carrier will not honor any claims unless you do this immediately.

**SPECIAL ORDERS—
Special orders will not be accepted for exchange or return.**

SPILL-STOP® MFG. LLC

1509 W. LeMoyne St., Melrose Park, IL 60160
Phone: 708-345-2200 or 800-323-0722
Fax: 708-345-4067 • E-mail: info@spill-stop.com
Website: www.spill-stop.com