



# WINE & LIQUOR

COLLECTION

 **Cayuga** DISPLAYS





**DEPARTMENT:**

# WINE & LIQUOR

**Let us help create a liquor and wine shop that your customers choose as their regular supply source.**

This department commonly has to succeed in presenting a maximum of product with a minimum of space. We offer a wide range of customizable shelving and mobile units, refrigerated cases and cross-merchandising options (like with cheese, for example). We can help develop the department that will get your products noticed. And with our layout expertise, you'll be sure to have a shop that truly feels worth the trip.

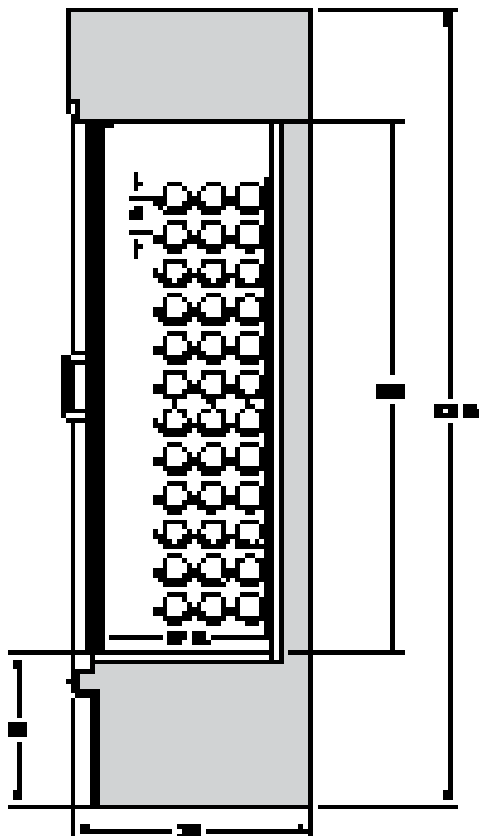
And when you work with Cayuga Displays, you can always be confident we'll help you to select the right product and options, so that you have the food presentation that is certain to elevate your customers' experience and enhance your brand - beautifully.

*"Working with the Cayuga team was 100% positive."*

Peter Cavin,  
Country Grocer,  
Vancouver Island, BC

# REFRIGERATED WINE DISPLAY

 REFRIGERATED




MODEL	LENGTH
WC01S-48	49 7/8"

## FEATURES:

- 3 interior finishes available
- Tempered glass swing doors. Locking option available
- Many laminate exterior colors, patterns and wood grain finishes available. Powdercoated finishes also available
- R-134A self-contained refrigeration. Remote option also available
- Fixed bottle slots designed to hold 108 standard sized wine bottles. 12 rows x 3 bottles deep
- LED lighting located on each side of the display
- Designed to maintain product temperature of 54-56°F

## SUGGESTED APPLICATIONS:

 Wine & Liquor

Note: Information and specifications may change due to engineering improvements.



# REFRIGERATED WINE DISPLAY

 REFRIGERATED

ELECTRICAL SPECS				
MODEL	LENGTH	VOLTS	AMPS	NEMA
WC01S-48	49 7/8"	115	11.5	5-15P

INTERIOR FINISH	
Textured Black	
Textured White	
Brushed Stainless Steel	

END PANELS	
Interior laminate the same as exterior	
Black interior	
White interior	
Brushed Stainless Steel interior	
Mirrored interior	
Mirrored end panel glass	
Tempered Glass Panes installed into both end panels	
Tempered Glass Pane installed in the LH end panel (visualized from the front)	
Tempered Glass Pane installed in the RH end panel (visualized from the front)	
- Black T-mold edging	
- White T-mold edging	
- Stainless Steel T-mold edging	
1" black McCue impact bumper strip applied to the front of the display	
Other McCue impact bumper strip colors Available upon request	

EXTERIOR FINISHES	
Category "A" laminate finish: <b>A-</b> ____	
Category "B" laminate finish: <b>B-</b> ____	
Other custom laminate specs:	
Powdercoated Textured Black	
Powdercoated Textured White	
Brushed Stainless Steel	
Oak Veneer Plywood	
- Vertical grain direction	
- Horizontal grain direction	
Birch/Maple Veneer Plywood	
- Vertical grain direction	
- Horizontal grain direction	
Clear Finish applied to Veneer	
Stain Finish Choice _____	
1" black McCue impact bumper strip applied to the front of the display	
Other McCue impact bumper strip colors Available upon request	
Miscellaneous Options	
Remote Refrigeration	

## ADDITIONAL FEATURES:

- Designed to maintain product temperature of 55°F with a maximum ambient atmosphere of 75°F/55% humidity
- Hot gas condensate evaporation system
- 1 Year Parts & Labour Warranty for Self-Contained Refrigeration
- 2 Year Parts & Labour Warranty for Remote Refrigeration
- Front air intake, rear discharge. Avoid any obstructions in these areas

# WINE DISPLAY



## Applications

- The small footprint of the wine display can be bolted together to form a seamless look
- Top deck sits on a 30° angle to allow bottles to be showcased
- Levelers and removable kick

# WINE DISPLAY

Clear finish shown



Finished End Panel



Weathered Wood finish shown w/1 finished end panel. Other finishes available - see chart.

MODEL	DESCRIPTION	LENGTH	DEPTH	HEIGHT
SDBD-005-01B	Wine Display	47 1/2"	27 1/4"	53"
SDBD-005-01A-A02	Finished End Panel	3/4"	27 1/4"	53"

## FEATURES:

- Birch/maple plywood, melamine and solid maple construction
- Top deck sits on 30° angle to allow bottles to be showcased
- Levelers
- Removable kick
- SDBS-005-01C consists of wine display (SDBD-005-01B) and one finished end panel

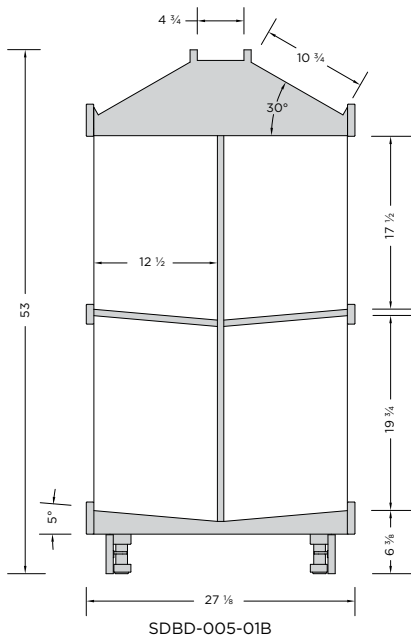
## OPTIONS:

- Refer to Stain Finishes Guide (Category C)

## DO NOT EXCEED MAXIMUM WEIGHT PER SHELF

Note: Information and specifications may change due to engineering improvements.

Specs Based on Standard Wine Bottle	
Max. Weight Per Shelf	Estimated Bottle Capacity Per Unit
40lbs	200



To order call **800.839.5536** or visit [cayugadisplays.com](http://cayugadisplays.com)

# FIXED SHELVING ISLAND



*Island Line-Up w/  
Two End Caps  
Weathered Wood finish  
shown.*



*Island Line-Up w/  
One End Cap & One  
Finished End Panel  
Natural finish shown.*

## Applications

- The shelving island is designed to be bolted together to ensure that the units lineup.
- End caps have slat wall for extra merchandising area.
- Optional finished end panels are available for island lineups that have no or one end cap
- Top of the center units are designed to help showcase bottles by angling the bottles at approximately 37°.
- Around the exterior of the base is 1" McCue bumper.
- Levelers and ABS shelf liner.



# FIXED SHELVING ISLAND - END CAP

Clear finish shown



Oiled Cherry finish shown. Other finishes available - see chart.

MODEL	DESCRIPTION	LENGTH	DEPTH	HEIGHT
SDIE-001-01B	Fixed Shelving Island - End Cap	46"	20"	61 ¾"

## FEATURES:

- Birch/maple plywood, slat wall with inserts and solid maple construction
- Levelers
- ABS shelf liner
- 1" McCue bumper

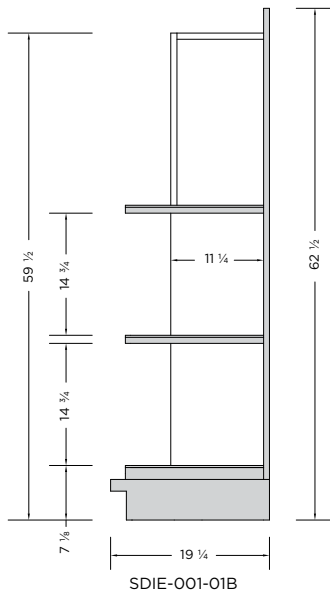
## OPTIONS:

- Refer to Stain Finishes Guide (Category C)

## DO NOT EXCEED MAXIMUM WEIGHT PER SHELF

Note: Information and specifications may change due to engineering improvements.

Specs Based on Standard Wine Bottle	
Max. Weight Per Shelf	Estimated Bottle Capacity Per Unit
180lbs	150



To order call **800.839.5536** or visit [cayugadisplays.com](http://cayugadisplays.com)

# FIXED SHELVING ISLAND - CENTRE

Clear finish shown



Finished End Panel



Select Cherry finish shown. Other finishes available - see chart.

MODEL	DESCRIPTION	LENGTH	DEPTH	HEIGHT
SDBD-002-01B	Fixed Shelving Island - 48"	48"	47 3/4"	60 5/8"
SDBD-002-02B	Fixed Shelving Island - 36"	36"	47 3/4"	60 5/8"
SDBD-002-01A-A06	Finished End Panel	3/4"	47 3/4"	60 5/8"

**FEATURES:**

- Birch/maple plywood and solid maple construction
- ABS shelf liner
- Removable kick
- Levelers

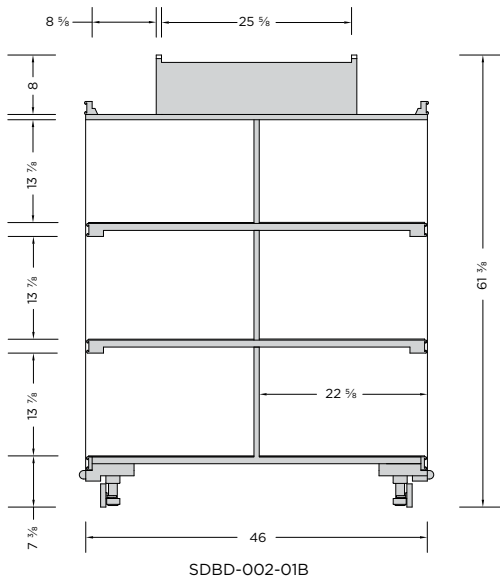
**OPTIONS:**

- Refer to Stain Finishes Guide (Category C)

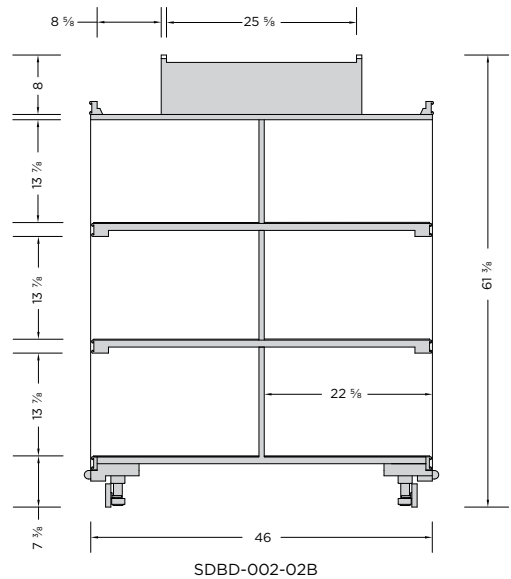
**DO NOT EXCEED MAXIMUM WEIGHT PER SHELF**

Note: Information and specifications may change due to engineering improvements.

Specs Based on Standard Wine Bottle	
Max. Weight Per Shelf	Estimated Bottle Capacity Per Unit
250lbs	560



Specs Based on Standard Wine Bottle	
Max. Weight Per Shelf	Estimated Bottle Capacity Per Unit
250lbs	440



# WALL SHELVING



## Applications

- The wall shelving is designed to house the different sizes, shapes and packaging of liquor, wine and beer.
- Units can create a continuous run by fastening units together
- Optional finished end panels are available
- Each unit is equipped with levelers, ticket mold, removable kick and ABS shelf liners.
- At each end of shelving run is a finished end panel.

# WALL SHELVING



Clear finish shown



Finished End Panel



Concerto finish shown. Other finishes available - see chart.

MODEL	DESCRIPTION	LENGTH	DEPTH	HEIGHT
SDBS-001-01B	Wall Shelving w/ Fixed Shelves - 36"	36"	23"	78 5/8"
SDBS-001-02B	Wall Shelving w/ Fixed Shelves - 48"	48"	23"	78 5/8"
SDBS-002-01B	Wall Shelving w/ Fixed Shelves - 48"	48"	23"	78 5/8"
SDCT-010-01A-A05	Finished End Panel	3/4"	23"	78 5/8"

### FEATURES:

- Birch/maple plywood and solid maple construction
- Levelers
- ABS shelf liner

### OPTIONS:

- Refer to Stain Finishes Guide (Category C)

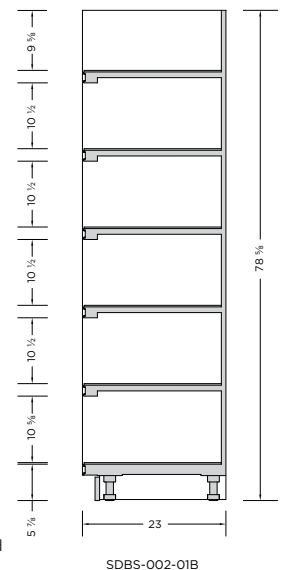
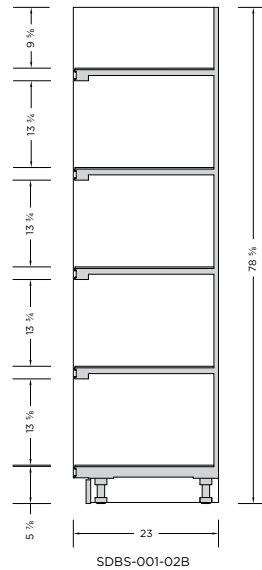
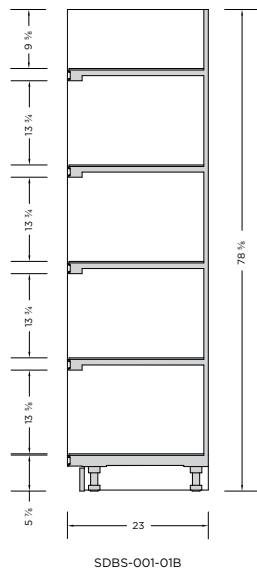
### DO NOT EXCEED MAXIMUM WEIGHT PER SHELF

Note: Information and specifications may change due to engineering improvements.

Specs Based on Standard Wine Bottle	
Max. Weight Per Shelf	Estimated Bottle Capacity Per Unit
250lbs	290

Specs Based on Standard Wine Bottle	
Max. Weight Per Shelf	Estimated Bottle Capacity Per Unit
250lbs	380

Specs Based on 6 Pack Craft Beer (335ml)	
Max. Weight Per Shelf	Estimated Bottle Capacity Per Unit
250lbs	140



# CRATE STYLE SHOP AROUND DISPLAY



Clear finish shown



Select Cherry finish shown. Other finishes available - see chart.

MODEL	DESCRIPTION	LENGTH	DEPTH	HEIGHT
SDSA-006-01B	Crate Style Shop Around	36 1/4"	36 1/4"	50"

### FEATURES:

- Birch/maple plywood construction
- Heavy duty locking casters
- Bumper around base
- Sign track on all 4 sides for posters
- ABS shelf liner

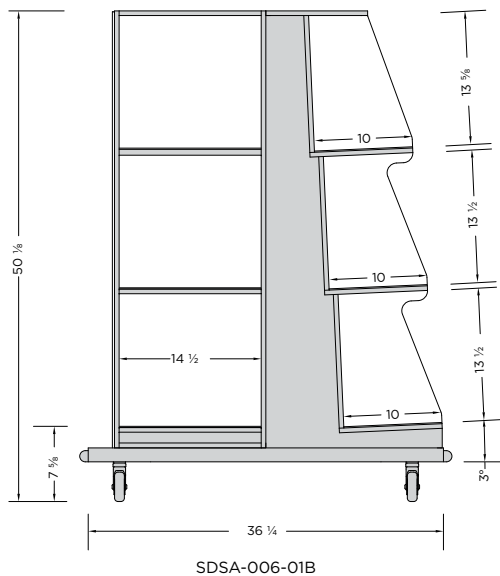
### OPTIONS:

- Refer to Stain Finishes Guide (Category C)

### DO NOT EXCEED MAXIMUM WEIGHT PER SHELF

Note: Information and specifications may change due to engineering improvements.

Specs Based on Standard Wine Bottle	
Max. Weight Per Shelf	Estimated Bottle Capacity Per Unit
140lbs	140



To order call **800.839.5536** or visit [cayugadisplays.com](http://cayugadisplays.com)

# CATEGORY A LAMINATES

- Standard products in stock
- **(ns)** Indicates non-stocking laminates with an additional 2-week lead time

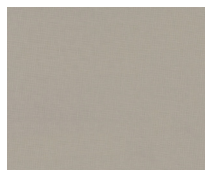
## SOLID COLOURS



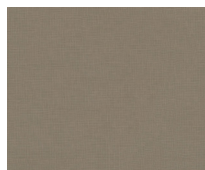
# CATEGORY A LAMINATES

- Standard products in stock
- **(ns)** Indicates non-stocking laminates with an additional 2-week lead time

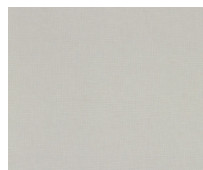
## PATTERN COLOURS



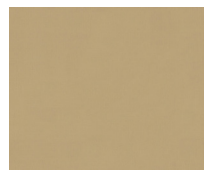
Classic Linen  
4943



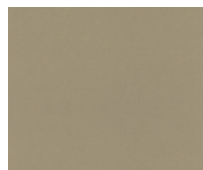
Casual Linen  
4944



Crisp Linen  
4942



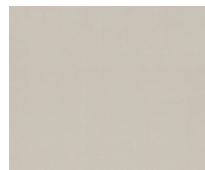
Soft Gold Mesh  
4911



Gilded Mesh  
4912 (ns)



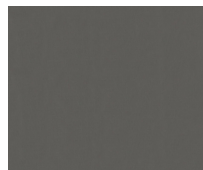
Sheer Mesh  
4876



Grey Mesh  
4877



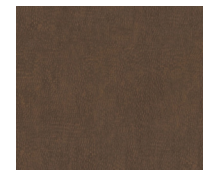
Pewter Mesh  
4878



Steel Mesh  
4879



Carbon Mesh  
4880



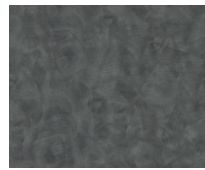
Windswept Bronze  
4794



Windswept Pewter  
4795



Pinball  
4937



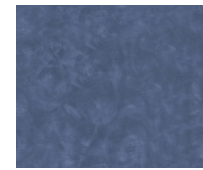
Pewter Brush  
4779



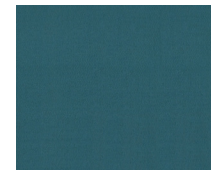
Antique Brush  
4823



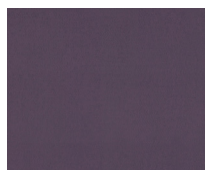
Maroochy Brush  
4745



Woolami Brush  
4746



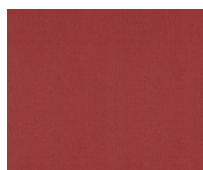
Blue Agave  
4919 (ns)



Egg Plant  
4913 (ns)



Kiwi  
4917 (ns)



Pomegrante  
4914 (ns)



Sprout  
4918 (ns)



Sweet Corn  
4916 (ns)

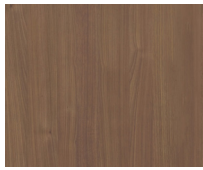


Tangerine  
4915 (ns)

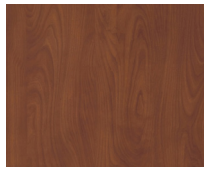
# CATEGORY A LAMINATES

- Standard products in stock
- **(ns)** Indicates non-stocking laminates with an additional 2-week lead time

## WOOD GRAINS



River Cherry  
7937



Wild Cherry  
7054



Manitoba Maple  
7911



Limber Maple  
10734



Kensington Maple  
10776



Fusion Maple  
7909



Monticello Maple  
7925



Harvest Maple  
7953



Huntington Maple  
7929



Bannister Oak  
7806



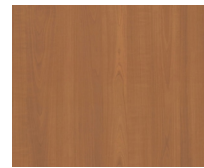
Castle Oak  
7928



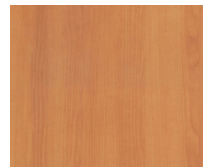
New Age Oak  
7938



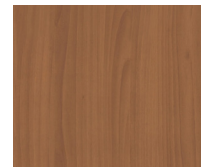
Solar Oak  
7816



Fonhill Pear  
10745



Natural Pear  
7061



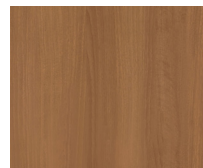
Tuscan Walnut  
7921



Beigewood  
7850



Natural Rift  
7954



Brazilwood  
7946



# CATEGORY B LAMINATES

- Standard products in stock
- **(ns)** Indicates non-stocking laminates with an additional 2-week lead time

## SOLID COLOURS



White Sand  
D403K

Gloss Black  
1595K

Regimental Red  
D12K

Ocean  
D502K

Island  
D498K

Persian Blue  
D26K (ns)

## PATTERN COLOURS



Astro Strandz  
4940K

Satin Stainless  
4830K

Silver Alchemy  
4860K

Vapor Strandz  
4939K

Cosmic Strandz  
4941K

## WOOD GRAINS



Montana Walnut  
7110K

Old Mill Oak  
7973K

Hampton Walnut  
7959K

Shaker Cherry  
7935K

Mambo Textured  
7948K

Zanzibar  
7957K



Rio  
7947K

Madagascar  
7944K

Asian Sun  
7951K

Zebra wood  
7980K

Tan Echo  
7941K

Biltmore Cherry  
7924K



Versailles Anigre  
7923K

Empire Mahogany  
7122K

Kenya Mahogany  
7958K (ns)

Cocobala  
7942K

Colombian Walnut  
7943K

Cafelle  
7933K

For larger laminate samples visit [www.wilsonart.com/commercial/laminates/designs](http://www.wilsonart.com/commercial/laminates/designs)

# CATEGORY B LAMINATES

- Standard products in stock
- **(ns)** Indicates non-stocking laminates with an additional 2-week lead time

## WOOD GRAINS

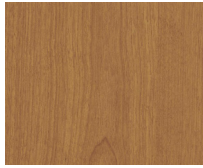
					
Walnut Heights 7965K	Uptown Walnut 7971K	Loft Oak 7968K	High Line 7970K	5 <sup>th</sup> Ave Elm 7966K	Studio Teak 7960K
					
Skyline Walnut 7964K	Aloe 7962K	White Cyprus 7976K	Red Barn 7979K (ns)	White Barn 7977K	Blue Barn 7978K (ns)
					
Xanadu 7945K	Asian Night 7949K	Asian Sand 7952K	Blond Echo 7939K	Raw Chestnut 7975K (ns)	Gold Alchemy 4861K
					
Truss Maple 7972K	Landmark Wood 7981K	Amber Cherry 7919K (ns)	Nepal Teak 7209K (ns)	English Oak 7885K (ns)	Williamsburg Cherry 7936K (ns)
					
Windsor Mahogany 7039K (ns)	Brighton Walnut 7922K	Figured Mahogany 7040K (ns)	Warehouse Oak 7969K (ns)	Palm Elm 7967K	

# CATEGORY C WOOD STAINS

## WOOD GRAINS



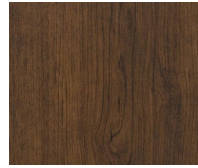
Oiled Cherry  
Match to Pionite/Panolam  
WC421



Wild Cherry  
Match to Formica 5904-43



Select Cherry  
Match to Formica 7759



Choco Cherry  
Match to Panval/Uniboard  
207



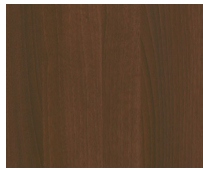
Natural Maple



Pearwood  
Match to Pionite/Panolam  
WX031



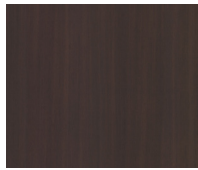
Weathered Wood



Concerto



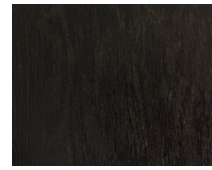
Danish Walnut  
Match to Arborite Parliament  
Walnut W305



Witchcraft  
Match to Pionite/Panolam  
WX421



Iron Mountain



Baloil

**\*Refer to physical swatches for a true representation of colors, above images may appear slightly different than actual samples. \***

# HOW TO ORDER

We'll help you select the right equipment for your requirements. The steps below will help us to serve you best.

- 1 Choose the fixtures or showcase that meets your displays requirements from the product specification sheets.
- 2 Review the options table found on the specification sheet and make your selections of the options provided.
- 3 Select from the large pallet of colours found on the last five pages of the brochure.
- 4 E-mail your request for a quote to your Cayuga sales representative or [sales@cayugadisplays.com](mailto:sales@cayugadisplays.com) and we will quickly respond to your request. Please include your full contact information in case we have any questions.

## Contact the inside sales team

### Cayuga Displays

E: [sales@cayugadisplays.com](mailto:sales@cayugadisplays.com)

T: 1-800-839-5536

F: 1-905-772-3179



**T: 800.839.5536 F: 905.772.3179**

**E: [sales@cayugadisplays.com](mailto:sales@cayugadisplays.com)**

**A: 88 Talbot St E, PO Box 130  
Cayuga, ON N0A 1E0**